

RESOLUTION NUMBER L-2008-03**Update to the Grizzly Flats Community Services District
Sphere of Influence****LAFCO Project No. 2007-10**

WHEREAS, the Cortese-Knox-Hertzberg Local Government Reorganization Act of 2000 governs the organization and reorganization of cities and special districts by local agency formation commissions established in each county, as defined and specified in Government Code Sections 56000 et seq. (unless otherwise indicated all statutory references are to the Government Code); and

WHEREAS, Section 56425 et seq. provides that the local agency formation commission in each county shall develop and determine the sphere of influence of each local governmental agency within the county, and enact policies designed to promote the logical and orderly development of areas within the spheres of influence, as more fully specified in Sections 56425 et seq.; and

WHEREAS, Section 56430 requires that local agency formation commissions conduct a municipal service review (MSR) prior to, or in conjunction with, consideration of actions to establish or update a sphere of influence (SOI) in accordance with Sections 56076 and 56425; and

WHEREAS, pursuant to Section 56430, in order to prepare and update spheres of influence, the Commission conducted a Water, Wastewater and Power Services Municipal Services Review and adopted a written statement of determinations on January 30, 2008; and

WHEREAS, the agencies reviewed were Cameron Estates, El Dorado Hills, Greenstone Country, and Grizzly Flats Community Services Districts; Georgetown Divide, Kirkwood Meadows, South Tahoe and Tahoe City Public Utility Districts; El Dorado Irrigation District; McKinney Water District; and the City of Placerville; and

WHEREAS, the Executive Officer reviewed the sphere of influence update pursuant to the California Environmental Quality Act (CEQA), and recommended that the project is exempt from CEQA under Section 15061(b)(3) because it is covered by the general rule that CEQA applies only to projects which have the potential for causing a significant effect on the environment. Where it can be seen with certainty that there is no possibility that the activity in question may have a significant effect on the environment, the activity is not subject to CEQA, and, based thereon, the Executive Officer prepared a Notice of Exemption; and

WHEREAS, the Executive Officer set a public hearing for January 30, 2008 for consideration of the environmental review and the draft sphere of influence update for

Grizzly Flats Community Services District and caused notice thereof to be posted, published and mailed at the times and in the manner required by law at least twenty-one (21) days in advance of the date; and

WHEREAS, on January 30, 2008 the draft sphere of influence update came on regularly for hearing before LAFCO, at the time and place specified in the Notice; and

WHEREAS, at said hearing, LAFCO reviewed and considered the draft sphere of influence, and the Executive Officer's Report and Recommendations; each of the policies, priorities and factors set forth in Government Code Section 56425 et seq.; LAFCO's Policies and Guidelines related to spheres of influence, starting with Policy 4.0; and all other matters presented as prescribed by law; and

WHEREAS, at that time, an opportunity was given to all interested persons, organizations, and agencies to present oral or written testimony and other information concerning the proposal and all related matters; and

WHEREAS, the Commission received, heard, discussed, and considered all oral and written testimony related to the sphere update, including but not limited to protests and objections, the Executive Officer's report and recommendation, the environmental document and determinations and the service reviews; and

WHEREAS, pursuant to Government Code Section 56425(i)(2), the Commission does hereby establish the functions and classes of services provided by Grizzly Flats Community Services District as follows: water provision services; and

WHEREAS, the Commission does hereby make the following determinations regarding the proposal pursuant to Government Code Section 56425(e):

1. *The present and planned land uses in the area, including agricultural and open space lands.*

Present land uses within the District include medium to high density residential uses, with a few parcels having other designations, such as "open space" and "public facility use." Present land uses surrounding the District include "natural resources" or low density residential. Planned land uses are anticipated to remain the same as current land uses.

2. *The present and probable need for public facilities and services in the area.*

The District has a difficulty meeting present needs for water services because of insufficient water rights and storage. Probable needs for future public water services may not be met because current demand exceeds available supply. While the District is pursuing additional rights, it is unknown whether it will be able to secure them. The District has a reasonable chance to secure financing to increase storage capacity; however, those capital improvements may not occur for a few years.

3. The present capacity of public facilities and adequacy of public services that the agency provides or is authorized to provide.

The District has adequate plans and facilities to cope with its current situation; however the ability of the District to provide potable water within its service area is questionable unless the District is able to expand its water supply storage capacity. Until those are resolved, the data indicate that the District would be unable to expand beyond its current service boundary.

4. The existence of any social or economic communities of interest in the area if the Commission determines that they are relevant to the agency.

Social or economic communities of interest in the area do not extend beyond the community of Grizzly Flat.

NOW, THEREFORE BE IT HEREBY RESOLVED, DETERMINED, ORDERED AND FOUND:

Section 1. Each of the foregoing recitals is true and correct.

Section 2. The Notice of Exemption prepared by the Executive Officer is approved as the appropriate environmental document for this project.

Section 3. The update to the Grizzly Flats Community Services District's Sphere of Influence to detach territory from the current sphere is orderly, logical and justifiable. The parcels proposed for detachment from the sphere are listed in Exhibit A of this Resolution, attached hereto and incorporated herein by this reference.

Section 4. The Executive Officer is directed to file a Notice of Exemption under Section 15061(b)(3) in compliance with the California Environmental Quality Act and local ordinances implementing the same.

Section 5. The Grizzly Flats Community Services District's sphere of influence is updated to conform to its current service area boundaries, as shown on the attached map, marked Exhibit B, attached hereto and incorporated herein by this reference.

PASSED AND ADOPTED by the El Dorado Local Agency Formation Commission at a regular meeting of said Commission, held January 30, 2008 by the following vote of said Commission.

Loftis, Long, Hagen, Humphreys, Norris

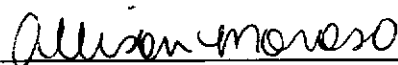
AYES: Sweeney

NOES: None

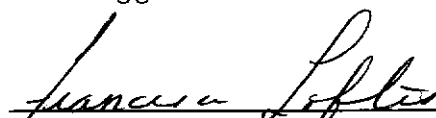
ABSTENTIONS: None

ABSENT: Briggs

ATTEST:



 Clerk to the Commission

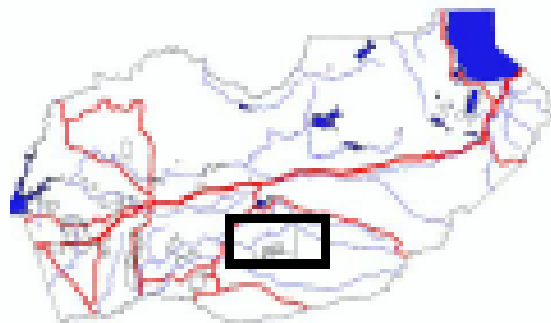


 Chairperson

Parcels to Remove from Grizzly Flat CSD Sphere of Influence

APN	APN	APN	APN	APN	APN	APN	APN
041-011-12	041-011-15	041-011-17	041-011-18	042-06010	042-060-17	042-060-18	042-060-20
041-011-19	041-011-21	041-011-22	041-011-24	042-240-02	042-240-03	042-240-04	990-824-01
041-011-26	041-011-26	041-011-30	041-011-32	990-842-19	990-857-57		
041-011-35	041-011-36	041-011-37	041-011-38				
041-011-39	041-021-01	041-021-02	041-021-03				
041-021-04	041-021-05	041-021-06	041-021-07				
041-021-08	041-021-09	041-021-10	041-021-11				
041-021-12	041-021-13	041-021-14	041-021-15				
041-021-17	041-021-18	041-021-19	041-021-20				
041-021-22	041-021-23	041-021-24	041-021-25				
041-021-27	041-021-29	041-021-30	041-021-31				
041-021-32	041-021-33	041-031-02	041-031-03				
041-031-04	041-031-05	041-031-10	041-031-16				
		041-031-25					
041-031-23	041-031-24	(Partial)	041-031-28				
041-031-29	041-031-35	041-031-36	041-040-22				
041-040-43	041-040-44	041-040-49	041-040-50				
041-040-51	041-051-35	041-200-01	041-200-04				
041-200-07	041-200-09	041-200-10	041-210-01				
041-210-02	041-210-03	041-210-04	041-210-05				
041-220-01	041-220-06	041-220-07	041-220-08				
041-220-09	041-220-10	041-220-11	041-220-12				
041-220-14	041-220-15	041-220-16	041-220-17				
041-220-18	041-220-19	041-220-20	041-220-21				
041-220-22	041-220-25	041-220-26	041-220-27				
041-220-28	041-220-30	041-220-31	041-220-32				
041-290-01	041-290-03	041-290-04	041-290-06				
041-360-01	041-360-06	041-360-08	041-360-09				
041-360-10	041-360-11	041-360-13	041-360-14				
041-360-15	041-360-16	041-360-17	041-360-18				
041-360-23	041-360-24	041-360-25	041-360-26				
041-360-27	041-360-29	041-360-30	041-360-31				
041-360-32	041-370-04	041-370-05	041-370-07				
041-370-08	041-370-10	041-370-11	041-370-14				
041-370-15	041-370-16	041-370-17	041-370-19				
041-370-20	041-370-21	041-370-22	041-370-26				
041-370-27	041-370-29	041-370-30	041-370-31				
041-370-32	041-370-35	041-370-36	041-370-37				
041-370-38	041-370-39	041-370-40	041-370-42				
041-411-01	041-820-02	041-820-09	041-820-14				
041-820-16	041-820-18	041-820-19	041-820-20				
041-820-21	041-820-22	041-820-23	041-820-24				
041-820-25	041-820-26	041-820-27	041-820-28				
041-820-29	041-820-30	041-820-31	041-820-32				
041-820-33	041-820-34	041-830-06	041-830-08				
041-830-16	041-840-02	041-840-03	041-840-04				
041-840-05	041-840-06	041-840-07	041-840-09				
041-840-10	041-910-06	041-921-01	041-921-02				
041-921-03	041-921-04	041-921-05	041-921-06				
041-921-07	041-921-08	041-922-01	041-922-02				
041-922-03	041-922-04	041-922-05	041-922-06				
041-931-01	041-931-02	041-931-03	041-931-04				
041-931-05	041-931-06	041-931-07	041-931-08				
041-931-09	041-931-10	041-931-11	041-931-12				
041-931-13	041-931-14	041-931-15	041-931-16				
041-931-17	041-931-18	041-932-01	041-950-03				
041-950-04	041-950-06	041-950-07	041-950-08				
041-950-09	041-950-10	041-950-11	041-950-12				
041-950-13	042-050-08	042-050-22	042-060-07				

Area of Interest:



Legend:



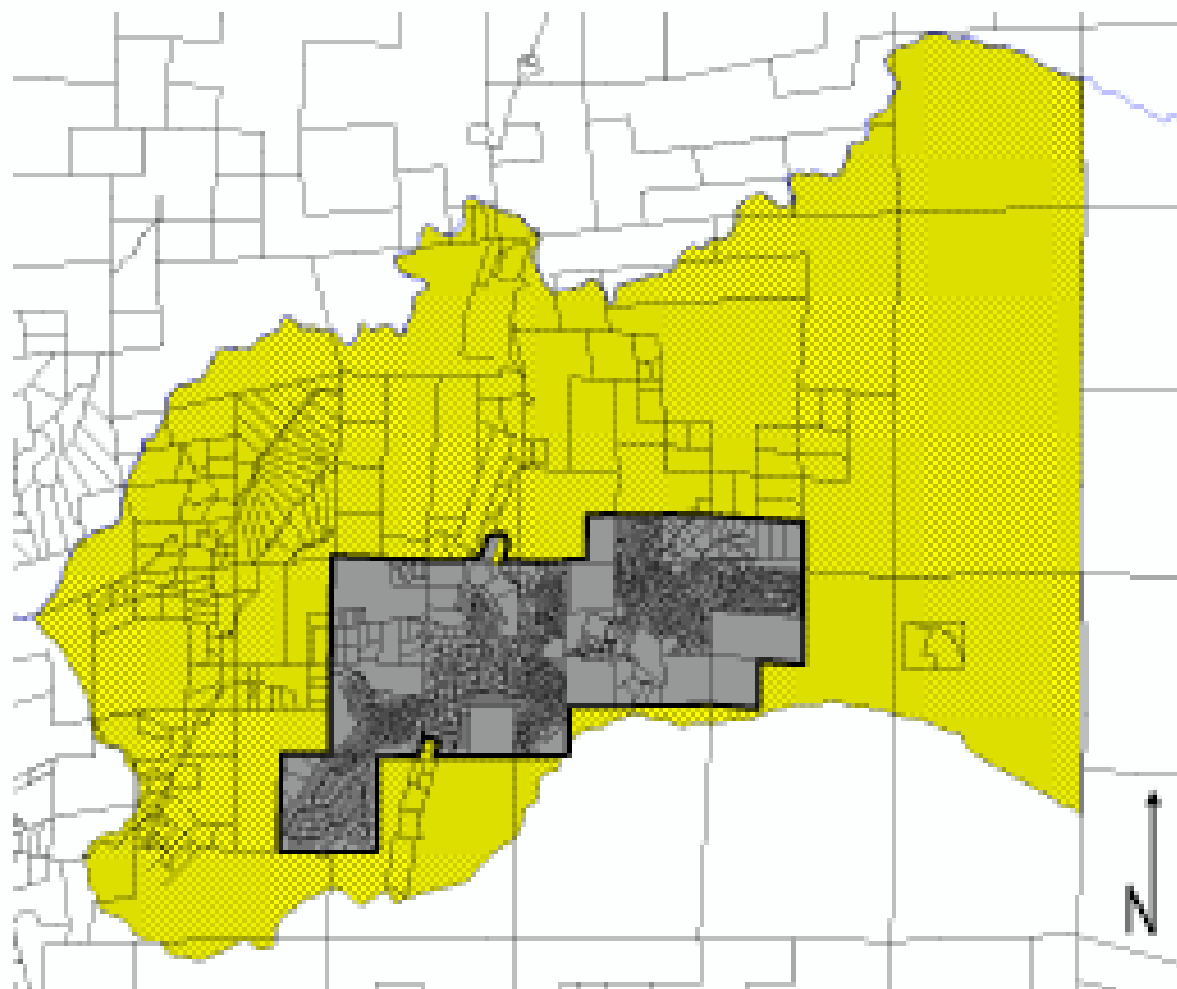
Service Area



2008 10-Year Sphere of Influence line



Areas to be detached from sphere of influence



APPROVED

Exhibit B – Grizzly Flats Community Services District