

# EL DORADO LAFCO

LOCAL AGENCY FORMATION COMMISSION

## **RESOLUTION NUMBER L-2012-04**

### **Update to the Cameron Park Community Services District Sphere of Influence**

***LAFCO Project No. 2011-03***

**WHEREAS**, the Cortese-Knox-Hertzberg Local Government Reorganization Act of 2000 governs the organization and reorganization of cities and special districts by local agency formation commissions established in each county, as defined and specified in Government Code Sections 56000 et seq. (unless otherwise indicated all statutory references are to the Government Code); and

**WHEREAS**, Section 56425 et seq. provides that the local agency formation commission in each county shall develop and determine the sphere of influence of each local governmental agency within the county, and enact policies designed to promote the logical and orderly development of areas within the spheres of influence, as more fully specified in Sections 56425 et seq.; and

**WHEREAS**, Section 56430 requires that local agency formation commissions conduct a municipal service review (MSR) prior to, or in conjunction with, consideration of actions to establish or update a sphere of influence (SOI) in accordance with Sections 56076 and 56425; and

**WHEREAS**, pursuant to Government Code Section 56430, in order to prepare and update spheres of influence, the Commission conducted a municipal service review of the Cameron Park Community Services District and adopted a written statement of determinations on May 23, 2012; and

**WHEREAS**, the Executive Officer reviewed the sphere of influence update pursuant to the California Environmental Quality Act (CEQA), and recommended that the project is exempt from CEQA under Section 15061(b)(3) because it is covered by the general rule that CEQA applies only to projects which have the potential for causing a significant effect on the environment. Where it can be seen with certainty that there is no possibility that the activity in question may have a significant effect on the environment, the activity is not subject to CEQA, and, based thereon, the Executive Officer prepared a Notice of Exemption; and

**WHEREAS**, the Executive Officer set a public hearing for May 23, 2012 for consideration of the environmental review and the draft sphere of influence update for Cameron Park Community Services District and caused notice thereof to be

posted, published and mailed at the times and in the manner required by law at least twenty-one (21) days in advance of the date; and

**WHEREAS**, on May 23, 2012, the draft sphere of influence update came on regularly for hearing before LAFCO, at the time and place specified in the Notice; and

**WHEREAS**, at said hearing, LAFCO reviewed and considered the draft sphere of influence, and the Executive Officer's Report and Recommendations; each of the policies, priorities and factors set forth in Government Code Section 56425 et seq.; LAFCO's Policies and Guidelines related to spheres of influence, starting with Policy 4.0; and all other matters presented as prescribed by law; and

**WHEREAS**, at that time, an opportunity was given to all interested persons, organizations, and agencies to present oral or written testimony and other information concerning the proposal and all related matters; and

**WHEREAS**, the Commission received, heard, discussed, and considered all oral and written testimony related to the sphere update, including but not limited to protests and objections, the Executive Officer's report and recommendation, the environmental document and determinations and the service reviews.

**NOW, THEREFORE BE IT HEREBY RESOLVED, DETERMINED, ORDERED AND FOUND:**

Section 1. Each of the foregoing recitals is true and correct.

Section 2. The Notice of Exemption prepared by the Executive Officer is approved as the appropriate environmental document for this project.

Section 3. The Commission does hereby make the following determinations regarding the proposal pursuant to Government Code Section 56425(e):

**1. The present and planned land uses in the area, including agricultural and open space lands.**

The District area is mostly built out with residential and commercial development. There are limited other land uses within the District's area and limited area internally for growth. The County is considering various development proposals to the north, southwest and east.

**2. The present and probable need for public facilities and services in the area.**

The District will require the acquisition and development of parklands in order to maintain the District's preferred level of service.

The increase in development around Cameron Park CSD on the north, southwest and east poses a policy quandary. As the new residents moving into those unserved and underserved areas utilize Cameron Park CSD's parks and recreation facilities, they begin to identify themselves with the Cameron Park community; however, they are not part of the District that has traditionally served that community. Annexation into the District for parks and recreation services has not traditionally posed as much of a challenge as annexing into the district for fire suppression and emergency services. While the District is usually the first responder for fire and emergency medical services in the immediately surrounding areas, breaching the incongruence between service capacity and service areas has proven to be politically sensitive.

**3. *The present capacity of public facilities and adequacy of public services that the agency provides or is authorized to provide.***

The District provides good public services, and will continue service provision at acceptable levels with the use of the community center and future acquisition of parklands. The continued instability at the District's highest levels, both in the Board of Directors and with constant turnover of its general manager, casts a pall on the CSD's ability to provide consistent management over its staff and/or advocate on its behalf in front of other agencies.

**4. *The existence of any social or economic communities of interest in the area if the Commission determines that they are relevant to the agency.***

The District is located within the unincorporated community of Cameron Park; however, the community of Cameron Park includes areas presently outside the Cameron Park CSD boundary and its spheres of influence. No additional communities of interest are located within the District boundaries. Nearby economic communities of interest include Cameron Estates, El Dorado Hills, Rescue and Shingle Springs.

Section 4. Pursuant to Government Code Section 56425(i)(2), the Commission does hereby establish the functions and classes of services provided by Cameron Park Community Services District as follows: Contracts, covenants and restrictions administration; emergency medical services; fire suppression; street lighting and landscaping services; parks and recreation services; solid waste collection; weed abatement services.

Section 5. Pursuant to Government Code Sections 56425(i)(2) and 61002(h), the Commission does hereby establish the functions and classes of latent services for Cameron Park Community Services District to be as follows: Drainage; law enforcement services; library services; mosquito abatement services; road and road maintenance services; water services; wastewater services; and other related services.

Section 6. The update to the Cameron Park Community Services District's Limited Service Area Sphere of Influence to extend the current sphere along with the inclusion

of additional territory is orderly, logical and justifiable. The additional parcels proposed for inclusion are:

115-030-02	115-030-14	119-020-35	119-020-37
115-030-03	115-410-05	119-020-36	119-020-48
115-030-12			

Section 7. The Executive Officer is directed to file a Notice of Exemption under Section 15061(b)(3) in compliance with the California Environmental Quality Act and local ordinances implementing the same.

Section 8. The Cameron Park Community Services District's Limited Service Area Sphere of Influence is updated to expand into the designated areas, as shown on the attached map, marked Exhibit A, attached hereto and incorporated herein by this reference.

**PASSED AND ADOPTED** by the El Dorado Local Agency Formation Commission at a regular meeting of said Commission, held May 23, 2012 by the following vote of said Commission.

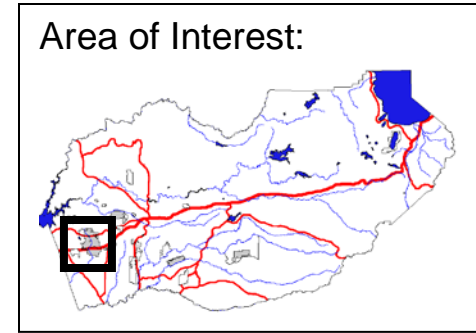
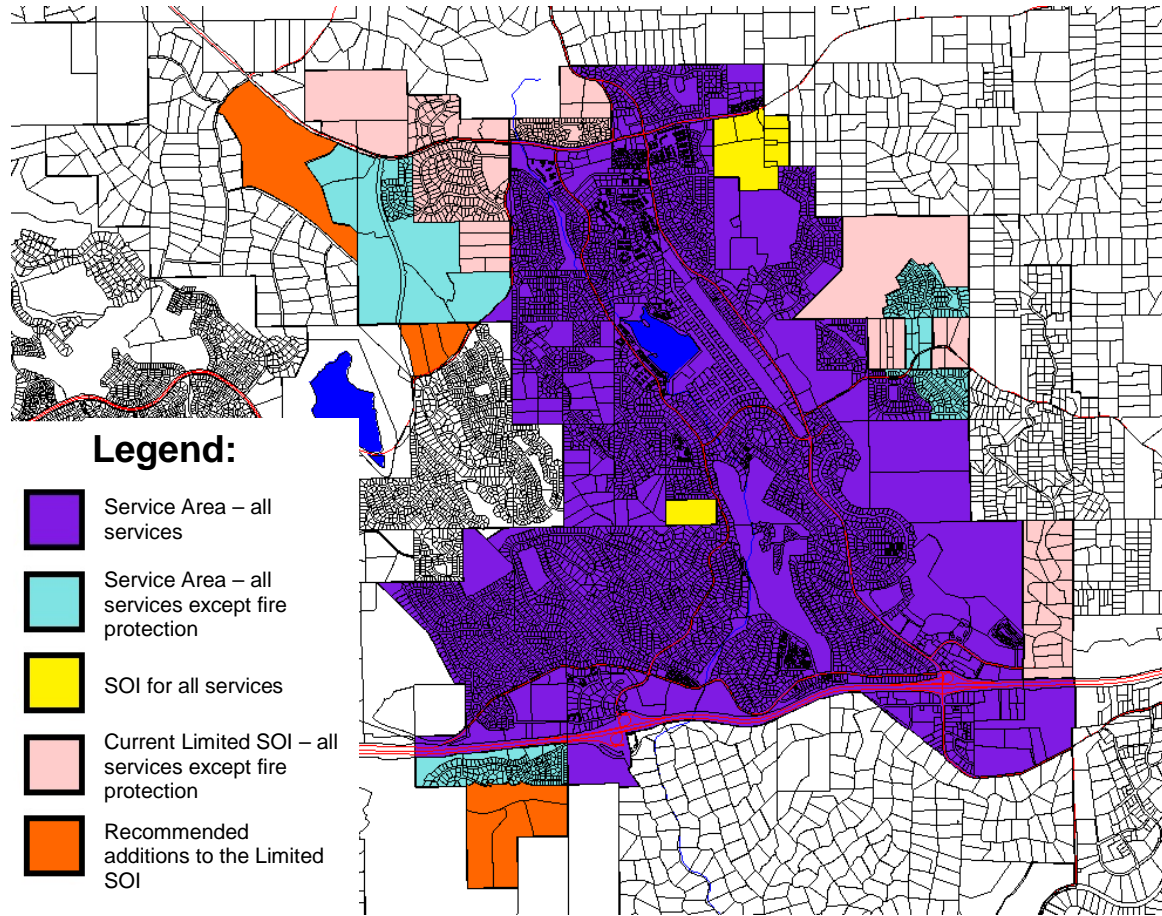
AYES:  
NOES:  
ABSTENTIONS:  
ABSENT:

ATTEST:

\_\_\_\_\_  
Interim Clerk to the Commission

\_\_\_\_\_  
Chairperson

# EXHIBIT A



## Recommended Cameron Park Community Services District Sphere of Influence Update