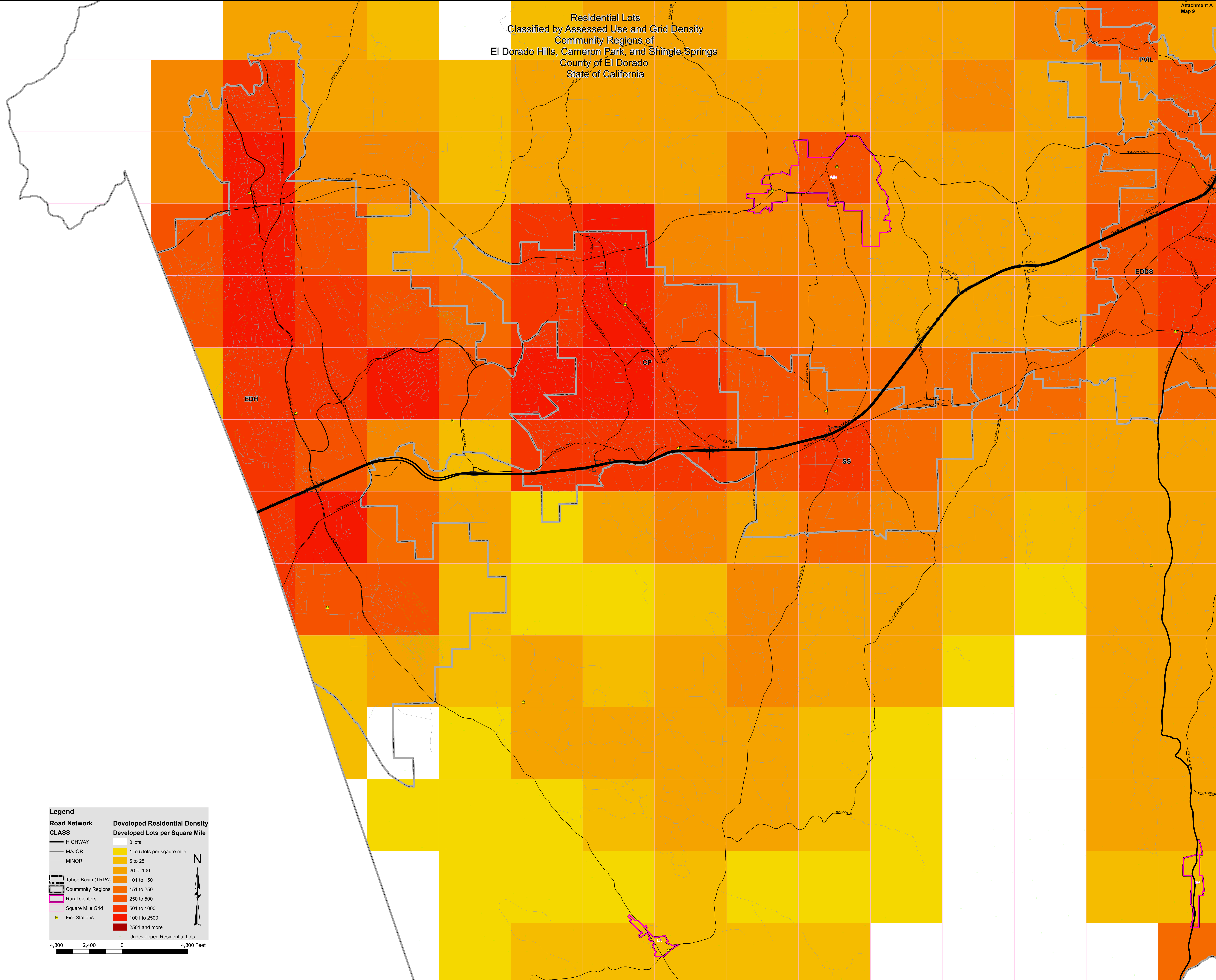


Residential Lots
Classified by Assessed Use and Grid Density
Community Regions of
El Dorado Hills, Cameron Park, and Shingle Springs
County of El Dorado
State of California



Legend

Road Network CLASS	Developed Residential Density
HIGHWAY	0 lots
MAJOR	1 to 5 lots per square mile
MINOR	5 to 25
Tahoe Basin (TRPA)	26 to 100
Community Regions	101 to 150
Rural Centers	151 to 250
Square Mile Grid	250 to 500
Fire Stations	501 to 1000
	1001 to 2500
	2501 and more
	Undeveloped Residential Lots

Scale: 4,800 2,400 0 4,800 Feet

North Arrow