

**Cameron Park
Community Services District
Municipal Service Review**

May 2012

EL DORADO LAFCO

LOCAL AGENCY FORMATION COMMISSION

CAMERON PARK COMMUNITY SERVICES DISTRICT

MUNICIPAL SERVICE REVIEW

MAY 2012

Commissioners

Chair Ron Briggs

Bruce Grego

Ken Humphreys

Wendy Mattson

Don Mette

James R. Sweeney

Alternates

Shiva Frentzen

Carl Hagen

Ray Nutting

Norm Rowett

Staff

José C. Henríquez

Erica Sanchez

Denise Tebaldi

Andrew Morris

EL DORADO LAFCO

LOCAL AGENCY FORMATION COMMISSION

RESOLUTION NUMBER L-2012-04**Update to the Cameron Park Community Services District
Sphere of Influence****LAFCO Project No. 2011-03**

WHEREAS, the Cortese-Knox-Hertzberg Local Government Reorganization Act of 2000 governs the organization and reorganization of cities and special districts by local agency formation commissions established in each county, as defined and specified in Government Code Sections 56000 et seq. (unless otherwise indicated all statutory references are to the Government Code); and

WHEREAS, Section 56425 et seq. provides that the local agency formation commission in each county shall develop and determine the sphere of influence of each local governmental agency within the county, and enact policies designed to promote the logical and orderly development of areas within the spheres of influence, as more fully specified in Sections 56425 et seq.; and

WHEREAS, Section 56430 requires that local agency formation commissions conduct a municipal service review (MSR) prior to, or in conjunction with, consideration of actions to establish or update a sphere of influence (SOI) in accordance with Sections 56076 and 56425; and

WHEREAS, pursuant to Government Code Section 56430, in order to prepare and update spheres of influence, the Commission conducted a municipal service review of the Cameron Park Community Services District and adopted a written statement of determinations on May 23, 2012; and

WHEREAS, the Executive Officer reviewed the sphere of influence update pursuant to the California Environmental Quality Act (CEQA), and recommended that the project is exempt from CEQA under Section 15061(b)(3) because it is covered by the general rule that CEQA applies only to projects which have the potential for causing a significant effect on the environment. Where it can be seen with certainty that there is no possibility that the activity in question may have a significant effect on the environment, the activity is not subject to CEQA, and, based thereon, the Executive Officer prepared a Notice of Exemption; and

WHEREAS, the Executive Officer set a public hearing for May 23, 2012 for consideration of the environmental review and the draft sphere of influence update for Cameron Park Community Services District and caused notice thereof to be posted, published and mailed at the times and in the manner required by law at least twenty-one (21) days in advance of the date; and

WHEREAS, on May 23, 2012, the draft sphere of influence update came on regularly for hearing before LAFCO, at the time and place specified in the Notice; and

WHEREAS, at said hearing, LAFCO reviewed and considered the draft sphere of influence, and the Executive Officer's Report and Recommendations; each of the policies, priorities and factors set forth in Government Code Section 56425 et seq.; LAFCO's Policies and Guidelines related to spheres of influence, starting with Policy 4.0; and all other matters presented as prescribed by law; and

WHEREAS, at that time, an opportunity was given to all interested persons, organizations, and agencies to present oral or written testimony and other information concerning the proposal and all related matters; and

WHEREAS, the Commission received, heard, discussed, and considered all oral and written testimony related to the sphere update, including but not limited to protests and objections, the Executive Officer's report and recommendation, the environmental document and determinations and the service reviews.

NOW, THEREFORE BE IT HEREBY RESOLVED, DETERMINED, ORDERED AND FOUND:

Section 1. Each of the foregoing recitals is true and correct.

Section 2. The Notice of Exemption prepared by the Executive Officer is approved as the appropriate environmental document for this project.

Section 3. The Commission does hereby make the following determinations regarding the proposal pursuant to Government Code Section 56425(e):

1. The present and planned land uses in the area, including agricultural and open space lands.

The District area is mostly built out with residential and commercial development. There are limited other land uses within the District's area and limited area internally for growth. The County is considering various development proposals to the north, southwest and east.

2. The present and probable need for public facilities and services in the area.

The District will require the acquisition and development of parklands in order to maintain the District's preferred level of service.

The increase in development around Cameron Park CSD on the north, southwest and east poses a policy quandary. As the new residents moving into those unserved and underserved areas utilize Cameron Park CSD's parks and recreation facilities, they begin to identify themselves with the Cameron Park community; however, they are not part of the District that has traditionally served that community. Annexation into the District for parks and recreation services has not traditionally posed as much of a challenge as annexing into the district for fire suppression and emergency services. While the District is usually the first responder for fire and emergency medical services in the immediately surrounding areas, breaching the incongruence between service capacity and service areas has proven to be politically sensitive.

3. The present capacity of public facilities and adequacy of public services that the agency provides or is authorized to provide.

The District provides good public services, and will continue service provision at acceptable levels with the use of the community center and future acquisition of parklands. The continued instability at the District's highest levels, both in the Board of Directors and with constant turnover of its general manager, casts a pall on the CSD's ability to provide consistent management over its staff and/or advocate on its behalf in front of other agencies.

4. The existence of any social or economic communities of interest in the area if the Commission determines that they are relevant to the agency.

The District is located within the unincorporated community of Cameron Park; however, the community of Cameron Park includes areas presently outside the Cameron Park CSD boundary and its spheres of influence. No additional communities of interest are located within the District boundaries. Nearby economic communities of interest include Cameron Estates, El Dorado Hills, Rescue and Shingle Springs.

Section 4. Pursuant to Government Code Section 56425(i)(2), the Commission does hereby establish the functions and classes of services provided by Cameron Park Community Services District as follows: Contracts, covenants and restrictions administration; emergency medical services; fire suppression; street lighting and landscaping services; parks and recreation services; solid waste collection; weed abatement services.

Section 5. Pursuant to Government Code Sections 56425(i)(2) and 61002(h), the Commission does hereby establish the functions and classes of latent services for Cameron Park Community Services District to be as follows: Drainage; law enforcement services; library services; mosquito abatement services; road and road maintenance services; water services; wastewater services; and other related services.

Section 6. The update to the Cameron Park Community Services District's Limited Service Area Sphere of Influence to extend the current sphere along with the inclusion of additional territory is orderly, logical and justifiable. The additional parcels proposed for inclusion are:

115-030-02	115-030-14	119-020-35	119-020-37
115-030-03	115-410-05	119-020-36	119-020-48
115-030-12			

Section 7. The Executive Officer is directed to file a Notice of Exemption under Section 15061(b)(3) in compliance with the California Environmental Quality Act and local ordinances implementing the same.

Section 8. The Cameron Park Community Services District's Limited Service Area Sphere of Influence is updated to expand into the designated areas, as shown on the attached map, marked Exhibit A, attached hereto and incorporated herein by this reference.

PASSED AND ADOPTED by the El Dorado Local Agency Formation Commission at a regular meeting of said Commission, held May 23, 2012 by the following vote of said Commission.

Frentzen, Grego, Humphreys, Mette,

AYES: Mattson, Sweeney, Briggs

NOES: None

ABSTENTIONS: None

ABSENT: None

ATTEST:



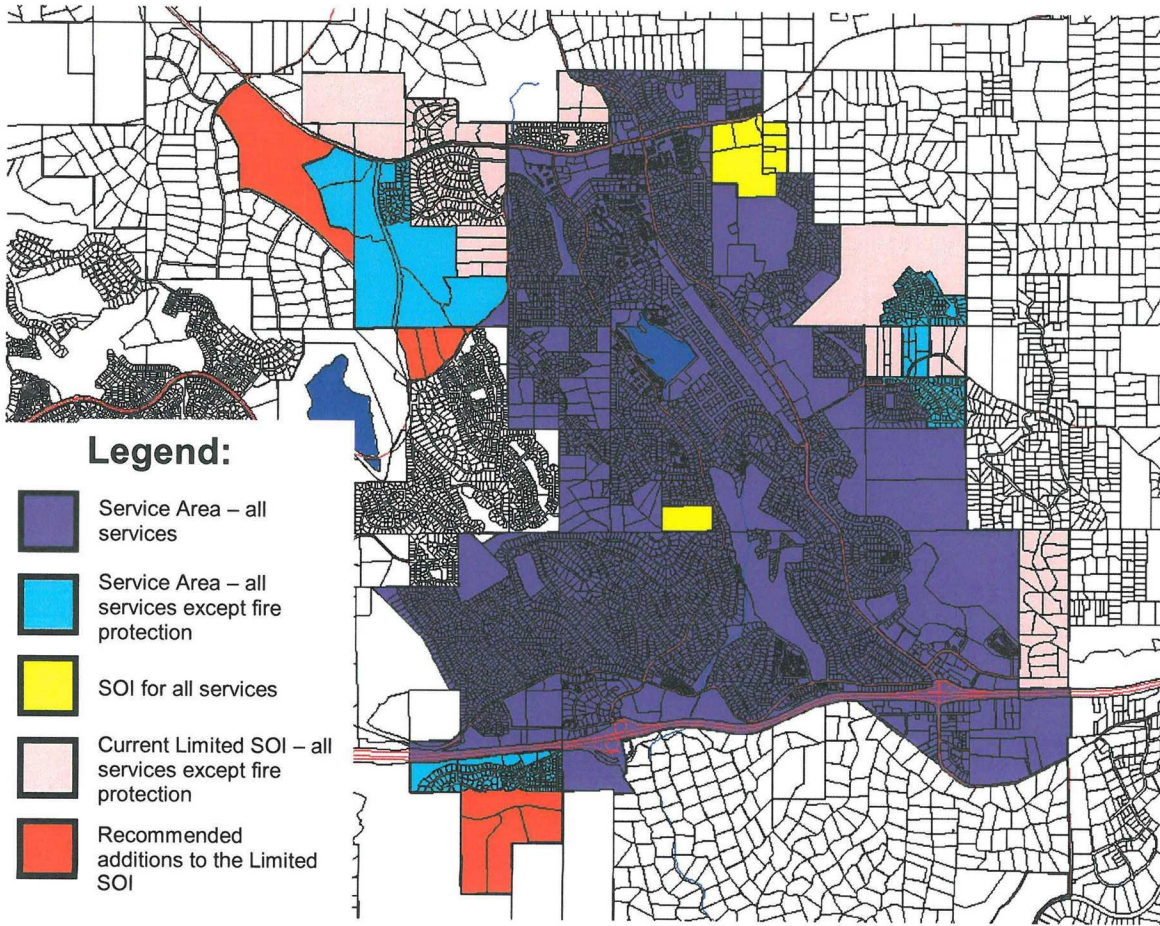
Interim Clerk to the Commission



Chairperson

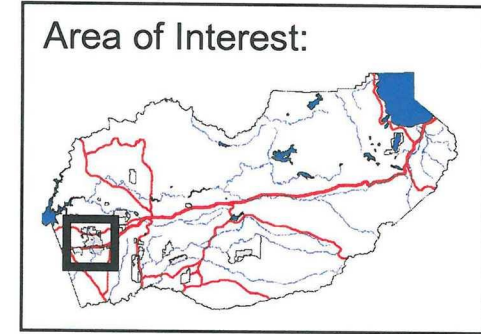
EXHIBIT A

APPROVED



Legend:

-  Service Area – all services
-  Service Area – all services except fire protection
-  SOI for all services
-  Current Limited SOI – all services except fire protection
-  Recommended additions to the Limited SOI



Recommended Cameron Park Community Services District Sphere of Influence Update

TABLE OF CONTENTS

I EXECUTIVE SUMMARY 2
II BACKGROUND 4
 A. Legislative Framework 4
 B. Relationship Between Spheres of Influence and Service Reviews 5
 C. Service Review Guidelines..... 6
 D. Why Cameron Park CSD Was Not Included in the 2011 Fire and Emergency Services Municipal Services Review 7
 E. The 2004, 2006 and 2008 MSRs and Their Immediate Results 8
III AGENCY DESCRIPTION 9
IV ENVIRONMENTAL REVIEW 26
V ENVIRONMENTAL JUSTICE 27
VI SERVICE REVIEW ANALYSIS AND DETERMINATIONS 29
VII SOI DETERMINATIONS 44
VIII REFERENCES AND SOURCES 46
IX APPENDICES 48
X MAPS 48

LIST OF TABLES

Table 1: Cameron Park Community Services District Call Log 19
Table 2: Cameron Park Community Services District Funding and Budget – Revenues 20
Table 3: Cameron Park Community Services District Park Impact Fees 21
Table 4: Cameron Park Community Services District Lighting and Landscaping Assessment District Fees (as of 2010-2011)..... 22
Table 5: Comparison of Architectural Review Fees 23
Table 6: Cameron Park Community Services District Funding and Budget – Expenditures 23
Table 7: Study Area Population by Race 28
Table 8: 2000 and 2011 Census Population Count of the Cameron Park CSD..... 29
Table 9: Western Slope Mutual Aid Given 33
Table 10: Western Slope Mutual Aid Received..... 33
Table 11: Cameron Park CSD Street Lighting Facilities by District..... 35
Table 12: Fiscal and Deployment Condition of the Fire Agencies..... 38

I EXECUTIVE SUMMARY

State mandates enacted in 2000 establish requirements for a Local Agency Formation Commission to conduct comprehensive reviews of all municipal services (MSRs) in its County. This Cameron Park Community Services District MSR serves as the basis for the accompanying sphere of influence determinations and the background information that will be utilized when considering future government reorganizations.

This MSR is part of the Commission’s adopted schedule for the second cycle of MSR/SOI updates. It is also part of the Fiscal Year 2010-11 Work Plan. Some of this report’s key findings are summarized in the table below:

Agency	Agency Population (2010 FESS Estimate)	Percentage of Firefighter Corps that is Volunteer	Average Property Tax Increment	Total Agency Revenues FY2009 (all services)	Total Agency Expenditures FY2009 (all services)	Nonrecurring Revenues as Percent of Total Revenue (fire services only)	2010 FESS Fiscal and Deployment Condition Assessment (fire services only)
Cameron Park CSD	16,331	55%*	18.83%	\$11,123,929	\$10,804,213	5%	Best

*Figure based on 2010 Fire and Emergency Services Study performed by Citygate. CAM reports that 42% the current roster is comprised of volunteers

The information contained in this document does not explicitly plan for future services, nor will any action or change in services result directly as a result of LAFCO’s adoption of the document. This MSR provides a description of existing services provided by the district and is inherently retrospective, taking a “snapshot” of existing conditions. However, this document will be used as a guide for future decisions by LAFCO in determining the agency’s ability to provide services.

The services provided by Cameron Park CSD are contracts, covenants and restrictions administration (CC&R), emergency medical services, fire suppression, lighting and landscape, parks and recreation, solid waste collection, weed abatement. The District contracts with CAL FIRE for fire and emergency services, outsources its solid waste collection to Waste Management and has its own employees provide for all other services. Cameron Park CSD also has two service areas: One for fire and a second for other services. However, neither of the boundaries matches the El Dorado County General Plan “Cameron Park Community Region.” Adding to this complexity is administrative instability, having replaced five general managers since 2003.

For each of the six categories of required determinations, LAFCO staff has prepared recommendations recognizing the following: unique land use and planning conditions, government organization and fiscal circumstance that affect the provision of services, effects of rapid demographic changes and growth, communities with different and similar service needs, and efforts to enhance service and impediments to doing so.

The service review and LAFCO’s adoption of a resolution making determinations are categorically exempt from the California Environmental Quality Act (Class 6, §15306).

In undertaking this service review and making determinations, LAFCO also considered its responsibilities under federal and state civil rights and environmental justice laws.

II BACKGROUND

A. Legislative Framework

In 1997, the State Legislature established the Commission on Local Governance for the 21st Century (CLG). The CLG was tasked with assessing governance issues and making recommendations, directing special attention to the Cortese-Knox Local Government Reorganization Act of 1985, the then-57 Local Agency Formation Commissions governed by the Act and citizen participation in local government. CLG members included a broad spectrum of constituent groups and perspectives including counties, cities, special districts, educators, industry and elected officials.

The CLG concluded that LAFCOs needed more specific background information, before decisions on specific applications were considered, to encourage orderly growth and to provide planned, well-ordered, efficient urban development patterns and to advantageously provide for the present and future needs of each county and its communities. Specifically, the CLG recommended that information on public service capacity and issues be gathered through periodic service reviews. These service reviews would ultimately constitute a statewide body of knowledge that could be used to resolve California's growth-related public service issues. Based on these recommendations, the State Legislature enacted Government Code §56430 as part of the Cortese-Knox-Hertzberg Local Government Reorganization Act of 2000 (CKH), which became effective on January 1, 2001.

Section 56430 of the CKH Act, in part and as amended effective January 1, 2009, states as follows:

- (a) In order to prepare and to update spheres of influence in accordance with Section 56425, the commission shall conduct a service review of the municipal services provided in the county or other appropriate area designated by the commission. The commission shall include in the area designated for service review the county, the region, the sub-region, or any other geographic area as is appropriate for an analysis of the service or services to be reviewed, and shall prepare a written statement of its determinations with respect to each of the following:
 - (1) Growth and population projections for the affected area.
 - (2) Present and planned capacity of public facilities and adequacy of public services, including infrastructure needs or deficiencies.
 - (3) Financial ability of agencies to provide services.
 - (4) Status of, and opportunities for, shared facilities.
 - (5) Accountability for community service needs, including governmental structure and operational efficiencies.

- (6) The potential effect of agency services on agricultural and open space lands.
- (b) In conducting a service review, the commission shall comprehensively review all of the agencies that provide the identified service or services within the designated geographic area.
- (c) The commission shall conduct a service review before, or in conjunction with, but no later than the time it is considering an action to establish a sphere of influence in accordance with Section 56425 or Section 56426.5 or to update a sphere of influence pursuant to Section 56425.

In addition, several sections of CKH empower LAFCOs to obtain information for service reviews:

- Section 56378 authorizes LAFCOs to initiate and make studies of existing governmental agencies. “In conducting those studies, the commission may ask for land use information, studies, and plans of cities, counties, districts, including school districts, community college districts, and regional agencies and state agencies and departments. (Those agencies) shall comply with the request of the commission for that information...”
- Section 56846 states, “Every officer of any affected county, affected city, or affected district shall make available to a reorganization committee any records, reports, maps, data, or other documents which in any way affect or pertain to the committee’s study, report, and recommendation and shall confer with the committee concerning the problems and affairs of the county, city, or district.”
- Section 56844 authorizes the Commission to undertake a study or report in place of a reorganization committee, thereby transferring those access rights.

B. Relationship Between Spheres of Influence and Service Reviews

The CKH Act requires LAFCOs to develop and determine the sphere of influence (SOI) for each applicable local governmental agency that provides services or facilities related to development. Government Code §56076 defines a SOI as “a plan for the probable physical boundaries and service area of a local agency.” Service reviews must be completed prior to the establishment or update of SOIs (§56430(a)). Spheres of influence must be reviewed and updated, as necessary, not less than once every five years (§56425). El Dorado LAFCO’s policies already contain the update requirement (Policy 4.2).

The information and determinations contained in a municipal service review are intended to guide and inform SOI decisions. Service reviews enable LAFCO to determine SOI boundaries and to establish the most efficient service provider for areas needing new service. They also function as the basis for other government reorganizations. Section 56430, as noted above, states that LAFCO

can conduct these reviews “before, in conjunction with, but no later than the time it is considering an action to establish a SOI.”

In addition to the factors in Government Code §§56425 and 56430, the Commission’s Policies and Guidelines Section 4.4 require that it make the following determinations prior to establishing a sphere of influence:

- (1) The service capacity, level and types of services currently provided by the agency and the areas where these services are provided.
- (2) Financial capabilities and costs of service.
- (3) Topographic factors and social and economic interdependencies.
- (4) Existing and planned land uses, land use plans and policies; consistency with county and city general plans and projected growth in the affected area.
- (5) Potential effects on agricultural and open space lands.
- (6) A description of the services that will be provided to any areas which may be added to the sphere and the timing and method for funding expansion of facilities or services.
- (7) An analysis of the effects a proposed sphere of influence on other agencies and their service capabilities.

C. Service Review Guidelines

The Governor’s Office of Planning and Research (OPR) was directed by statute (§56430) to prepare guidelines to assist LAFCOs in complying with the new service review requirements. In that regard, the final *Local Agency Formation Commission Municipal Service Review Guidelines* was released in August 2003. These guidelines were utilized in the preparation of this MSR.

The guidelines identify several possible goals and objectives for municipal service reviews to be achieved through written determinations in the nine required areas. These goals and objectives are as follows:

- Promote orderly growth and development in appropriate areas with consideration of service feasibility, service costs that affect housing affordability and preservation of open space, important agricultural land and finite natural resources.
- Encourage infill development and direct growth to areas planned for growth in general plans.
- Learn about service issues and needs.
- Plan for provision of high quality infrastructure needed to support healthy growth.
- Provide tools to support regional perspectives or planning that address regional, cross-county or statewide issues and processes.

- Develop a structure for dialogue among agencies that provide services.
- Develop a support network for smaller or ill-funded districts that provide valuable services.
- Provide backbone information for service provider directories or inventory reference documents for counties that do not have them.
- Develop strategies to avoid unnecessary costs, eliminate waste and improve public service provision.
- Provide ideas about opportunities to streamline service provision through use of shared facilities, approval of different or modified government structures, joint service agreements, or integrated land use planning and service delivery programs.
- Promote shared resource acquisition, insurance policies, joint funding requests or strategies.

The guidelines emphasize that “LAFCOs may need to modify these recommendations to reflect local conditions, circumstances and types of services that are being reviewed.” To that end, El Dorado LAFCO also utilized its own set of policies for service reviews (Policy 5 et seq.), which incorporate the goals and objectives listed above.

D. Why Cameron Park CSD Was Not Included in the 2011 Fire and Emergency Services Municipal Services Review

Fire suppression in El Dorado County is provided through one city, one county water district, two community service districts, and ten fire protection districts (refer to Map 1). Ambulance services are overseen by the County of El Dorado, funded through two county service areas and outsourced to two joint powers authorities composed of the fire suppression agencies. In addition, the level of coordination and cooperation among the fire agencies in El Dorado County is extensive. Through the El Dorado County Fire Chiefs’ Association, the fire agencies coordinate the classification of calls, new recruit training, fire prevention standards, radio frequencies, and facilitate the discussion that affects all districts countywide. In addition, with the exception of Meeks Bay, all districts belong to a joint powers authority, providing the staff and ensuring the proper equipping of the ambulances that respond to medical calls. Consequently, one needs to see the system’s “big picture”: in El Dorado County, the fire and emergency response system is *functionally* integrated. That was the logic behind aggregating the service review of most fire and EMS agencies into a single *Fire and EMS* Municipal Service Review.

However, that only speaks to fire and emergency medical services. Cameron Park Community Services District is a multi function agency that provides other services besides fire suppression and EMS, so it seems more appropriate that all of its powers be analyzed in its own individual MSR. Just like in the 2011 Fire

and EMS MSR referenced Cameron Park CSD to round out its discussion, this MSR will reference the 2011 Fire and EMS MSR where appropriate.

E. The 2004, 2006 and 2008 MSRs and Their Immediate Results

In the inaugural cycle of municipal service reviews (2001-2008), studies were conducted based on the type of services provided by an agency, not on the agency itself. Consequently, as part of this cycle Cameron Park CSD appeared in four MSRs. The first was the 2004 *West County Parks and Recreation Municipal Services Review*, whose end result was the reaffirmation of Cameron Park CSD's "limited service area" and "limited services area sphere of influence." The 2006 *Countywide Fire Suppression and Emergency Services Municipal Services Review* led to a discussion between the disconnect of service area and resources on the ground as evidenced by the discrepancy in mutual aid response rates. The 2007 *General Government Services II Municipal Services Review* and the 2008 *General Government Services I Municipal Services Review* rounded off the study of Cameron Park CSD.

All of these reports found that Cameron Park CSD was providing adequate services across the board and that enough revenues were being generated to offset service. However, soon after the completion of these studies, Cameron Park CSD was embroiled in several political controversies, from the size of the swimming pool at its new community center to a lawsuit filed by one of its previous general manager.

III **AGENCY DESCRIPTION**

Cameron Park Community Services District

Contact Information

Address: 2502 Country Club Drive
Cameron Park, CA 95682

Phone: 530-677-2231

Website: www.cameronpark.org

Management Information

Manager: Mary Cahill, General Manager

Governing Body: Board of Directors

Board Members:

Alan Clarke, Director	Elected: 2008-2012
Shiva Frentzen, President	Elected: 2010-2014
Scott McNeil, Director	Elected: 2010-2014
Greg Stanton, Vice President	Elected: 2010-2014
Sean Tucker, Director	Elected: 2008-2012

Board Meetings: Third Wednesday of every other month at 7:00 pm at the Cameron Park Community Center

Staffing: Refer to website for list of staff contacts

Service Information

Empowered Services: Water, wastewater, solid waste, fire protection and emergency services, parks and recreation, lighting and landscaping, mosquito abatement, law enforcement, library services, road maintenance, drainage, CC&R administration and weed abatement

Services Provided: Fire protection and emergency services, parks and recreation, lighting and landscaping, CC&R administration, solid waste, and weed abatement

Latent Powers: Water, wastewater, mosquito abatement, law enforcement, library services, road maintenance and drainage

Area Served: 4,160 acres, or 6.5 square miles (fire service only)
4,392 acres, or 6.9 square miles (LSA)

Population Served: 18,878 people (estimated from 2010 Census); 10,869 registered voters according to County Elections Office

Major Infrastructure: 125.4 acres of active parks, unimproved park sites and open space, 790 street lights, two fire stations and related fire and emergency services equipment and vehicles, one Community Center

Fiscal Information

Budget:	\$5,826,460 for FY 2010-11
Sources of Funding:	Assessments for CC&R administration and lighting districts, park impact fees, property taxes, development impact fees
Rate Structure:	Park Impact Fees, Lighting District Fees and Recreational Fees, Development Impact Fees

Background

The Cameron Park Community Services District (CAM, though the District has also been referred to in other publications by the initials CPCSD) was formed on June 26, 1961 by Resolution 97-61 of the Board of Supervisors. The CAM boundaries include most of the Cameron Park community between El Dorado Hills, Shingle Springs and Rescue. CAM has two service areas. The area where CAM provides all services is approximately 4,160 acres, or 6.5 square miles. The “limited services area,” in which CAM provides all empowered services, except for fire suppression encompasses an additional 232 acres or 0.4 square miles (refer to Map 2). Services and facilities are concentrated around the Cameron Park Drive/Cambridge Road corridor between Highway 50 and Green Valley Road. The general topography consists of a central valley along the Deer Creek Drainage. Much of the valley is enclosed between ridges on the east and west with mature stands of brush and dense oak woodlands. Slopes range from 15% to 35%. The average elevation of the district is approximately 1,250 feet. Major access roads/inhabited corridors include Highway 50, Cameron Park Drive, Cambridge Road and Green Valley Road.

Land Use and Population Forecasts

Most of the district’s territory is built-out with high density residential development as the dominant land use, resulting in a high population density relative to the undeveloped areas surrounding the district. The District’s Master Plan projected a population of no more than 20,000 by the year 2010. This plan includes a table of population projections for each year until 2015, showing a total population of 19,608 in that year. The CSD predicts the population to grow, over the next ten years, by approximately 2,000 residents. Subsequent data has shown that the Master Plan projections were not far off.

As of the 2010 Census, there were 18,878 people residing in the Cameron Park “census designated place.” However, the boundaries for the Cameron Park CDP differs from either of its service boundaries (refer to Map 3). The 2006 Countywide Fire Suppression and Emergency Services MSR indicated that CAM’s fire protection boundary contained an estimated 2005 population of 18,225 (5,588 developed single family residential parcels times 2.69 persons per dwelling unit, and 1,298 multifamily units times 2.46 persons per dwelling unit). The 2010 Fire and Emergency Services Study (2010 FESS), prepared by Citygate Associates, estimated a lower number, indicating the population at 16,331 based on 7,284 dwelling units. Roughly, the

population density in Cameron Park is approximately 2,512 persons per square mile in the area where the district has fire protection responsibilities.

As noted above, CAM's "limited service area," where it provides all services except fire, is slightly larger than the fire service area, containing approximately 372 additional dwellings. The MSR formula would indicate the LSA contains 1,000 more people, for a total LSA population on 19,225. Using Citygate's formula, this is an additional 834 persons, or an estimated population of 17,165 for the LSA area.

There are no lands within either of CAM's service areas in active agricultural use. A variety of industrial uses include the Cameron Park Airport and related uses on Cameron Park Drive and along Durrock Road. Commercial areas are dispersed at major access road intersections throughout the district. Other land uses include a golf course and several community and neighborhood parks.

Major natural features include Cameron Park Lake and 300 open space acres of the Pine Hill Preserve. Most of the district's territory is hilly with several ridges running generally north-south. According to the Fire Hazard Severity Zone map, several areas within the districts are designated as a Local Responsibility Area (LRA) for wildfire protection: A small area in the southwest portion of the district near Blue Oak School and a large portion in the northern part of the district between Bass Lake Road, La Cescenta Drive, Green Valley Road and Royal Park Drive. Combined, these two areas comprise approximately 30% of the district's total territory (refer to Map 4). The remaining lands are State Responsibility Area (SRA). The majority of the district is a risk area for wildland urban interface. Newer subdivisions built within the last ten years meet current fire safe regulations and are exposed to less wildland fire risk.

The district serves a community which is largely developed at urban or suburban densities and significant new growth is planned or proposed in the immediate periphery of the CAM. These developments include projects such as Silver Springs, Bell Woods, Vista Verde, Campobello, Porter, Summer Brook and Cameron Meadows, which will contribute to the projected population growth.

Services and Programs

Empowered services under Government Code §61000 et seq. include the provision of water for domestic, irrigation, sanitation, industrial, fire protection and recreation uses; collection, treatment, or disposal of sewage, waste and storm water; garbage collection and disposal; fire protection; parks and recreation; street lighting; mosquito abatement; police protection; library services; and maintenance of roads, bridges and culverts. The formation resolution includes all empowered services. According to the district's budget, provided services include fire protection, emergency services, parks and recreation, street lighting and landscaping and enforcement of covenants, conditions and restrictions (CC&Rs).

In 2006, Senate Bill 135 (Kehoe, 2005), among other things, mandated the designation of a community services district's powers as active or latent. Specifically, the bill defined and clarified "latent powers" as any service that a CSD is authorized to

perform but LAFCO has determined, through its MSR process, is not being provided prior to January 1, 2006. In February 2008, the Commission determined CAM's latent powers to be drainage, law enforcement, library, mosquito abatement, road maintenance, water and wastewater services

Fire Protection and Emergency Medical Services

Since November 1996, CAM has contracted with California Department of Forestry and Fire Protection (CAL FIRE) for fire and ambulance personnel. The agreement is a five-year "Schedule A" contract which allows CAM access to CAL FIRE's statewide resources (Fiscal Year 2011-12 is year four of the contract). Through this agreement, CAM also receives support and services from state funded CAL FIRE personnel working in El Dorado County such as other chief officers, the CAL FIRE training bureau, the fire prevention bureau, mobile equipment manager, mechanics, personnel services and other services. In return, CAL FIRE is able to draw upon the "Schedule A" personnel funded by Cameron Park when needed to help meet the CAL FIRE mission. Appendix A contains a summary of fire-related programs and services provided by CAM and its fellow fire suppression agencies.

The water supply source for fire suppression throughout CAM is El Dorado Irrigation District (EID). The district has an ISO rating of five in areas within 1,000 feet of a hydrant and nine in areas further from a hydrant. CAM's last ISO rating was completed in December 2001.

Park and Recreation Services

CAM provides parks and recreation facilities, including neighborhood and community parks and open space preserves. The district's overall park standard is five acres of developed parkland per 1,000 residents and five acres per 1,000 residents for open space. Open space includes creek corridors, trails, slope easements, wetlands and other undeveloped natural lands. CAM also has population-based standards for other types of recreational facilities, including baseball diamonds, softball diamonds, tennis courts, soccer fields, swimming pools and a Community Center. Further, the District operates recreational facilities which are utilized by residents from outside of the District's service area.

In addition to parks and recreation facilities, the district offers a wide range of recreational programs, classes and events for adults and children. These programs are run by the district's recreation supervisor and full-time and seasonal staff. Children's programs include special interest classes, art classes, aquatics programs, and preschool and afterschool athletic programs. Adult recreation programs primarily consist of special interest classes, sports and aquatics. In addition to these regular programs, CAM also hosts special events year round.

Street Lighting and Landscaping

CAM provides landscaping and lighting services to 19 individual sub-districts called "lighting and landscaping assessment districts" or LLADs. These LLADs were formed in order to provide funding for the maintenance and improvement of landscaping and lighting facilities within their boundaries, and usually cover no more

than a single subdivision. Some LLADs are in the LSA and do not receive fire service from CAM. Instead, these LLAD areas overlap with the Rescue Fire Protection District and El Dorado County Fire Protection Districts and remain under their respective jurisdiction for fire protection.

Street lighting maintenance is performed by PG&E, though power is paid for by CAM. Landscaping services include irrigating landscaped areas and trees, maintaining concrete walkways and other outdoor features, maintaining recreational areas including: picnic tables and dog walking areas, and sidewalk installation and improvements. Landscaping services and fees vary among the LLADs.

Covenants, Conditions & Restrictions Enforcement

CAM performs enforcement of 68 different Covenants, Conditions & Restrictions (CC&Rs) contracts to maintain a uniform standard of development within some areas. The district has a CC&R compliance officer and an Architectural Review Committee which meets weekly to review construction plans. The district's website provides a significant amount of information on CC&Rs.

Other Services

Solid waste services are contracted out to Waste Connections (doing business as El Dorado Disposal) under a franchise agreement.

Infrastructure, Facilities and Equipment

Fire Protection and Emergency Medical Services

CAM currently operates two fire stations; Station 88 at 2961 Alhambra Drive and Station 89 at 3200 Country Club Drive. The district also owns the lot adjacent to Station 89. The 2010 FESS found that neither station needs to be replaced at this time.

CAM has considered constructing a new fire station in the general area of Cambridge Road between Green Valley Road and Hillcrest Road, although no plans are final at this time.

In addition, El Dorado County FPD owns property in the Cambridge Oaks subdivision within CAM. The property was discussed in the past for a possible future joint use fire station among CAM, El Dorado Hills CWD and El Dorado County FPD; however, the status of these discussions is unknown. Also unknown is how the close proximity of El Dorado Hills CWD's station off Bass Lake Road will factor into the decision of building the station as a need relative to other District needs.

CAM facilities are used by the County Sheriff, the Fire Safe Council, CAL FIRE, community groups, seniors and others. The district maintains a meeting room policy and charges rental fees which can be waived for non-profit organizations. Facilities are also rented through the district's park and recreation department year round.

CAM owns eight engines: three Type I Structure engines, two Type II engines and three Type III engines; however, one Type I engine is in the process of being sold. In addition, CAM has two Battalion Chief vehicles and three utility vehicles. NFPA

recommends that second line equipment should not be more than 20 years old. Only one of the district's major response apparatus listed is more than this recommended age. However, the 2010 FESS determined that none of them were in need of near-term replacement.

Park and Recreation Services

CAM operates approximately 125 acres of parks and recreational facilities. This includes 60 acres of developed parks, 20 acres of undeveloped parks, and the 45-acre Cameron Park Lake. Of the developed parklands, 29 acres are considered neighborhood parks (serving a ½ mile area) and the remaining 17 acres are considered community parks (serving an area of one to three miles). The CSD provides recreational programs at facilities located throughout the district, primarily in the Community Center and local schools, such as Camerado Springs and Blue Oak schools, which are rented on an hourly basis. Appendix B contains a list of recreational facilities and parks offered by the CSD.

The new CAM Community Center was completed in March 2009. It includes a ten lane recreational/competition swimming pool, an assembly hall with stage, a dance studio, two small program rooms, a kitchen area, and a gymnasium with large meeting rooms, locker rooms and pool access. The center also houses the CAM administrative offices.

Street Lighting and Landscaping

The District maintains 19 lighting and landscape districts (LLADs), six of which provide landscaping as well as lighting. All but two of the LLADs provide street lighting with a total of 790 street lights. Each year, the District completes a Landscaping and Lighting District Engineer's Report to assess the needs of each LLAD and determine appropriate changes in fees.

Covenants, Conditions & Restrictions Enforcement

The District does not appear to require capital or infrastructure in order to enforce CC&Rs, other than office space for one CC&R enforcement officer and a vehicle.

Personnel and Staffing

Fire Services

The Cameron Park Fire Department is currently staffed by up to 19 "line personnel," two officers and one technician. Through CAM's contract with CAL FIRE, the full-time firefighters are CAL FIRE personnel that are funded by CAM and permanently positioned at CAM's stations. These currently include two Battalion Chiefs, two Fire Captain/Paramedics, two Fire Captain/EMTs, twelve Fire Apparatus Engineer/Paramedics, and three Fire Apparatus Engineer/EMTs. There is also a part time Fire Prevention Assistant (980 hours/annually) that is employed by the CPCSD and funded through the fire department budget.

In addition, the Cameron Park Fire department now utilizes a Resident Firefighter Program, which differs from a traditional community based volunteer firefighter

program. This allows for participants to come from surrounding geographical areas, often out of the county, to perform a minimum of three 24 hour shifts of coverage per calendar month. Although these individuals could be called upon to provide additional staffing or incident response outside of their minimum three shifts, their response times could be significantly longer depending on travel time from their area of residence or work outside of the District. The District currently has a monthly average of fifteen Resident firefighter positions.

The CSD is allowed to alter the terms of the agreement with CALFIRE, including the amount of available funding for fire services, with 120 days notice. Recently, the District's Board sent notice of its intent to do so in February 2011. This resulted in cutting 3 positions, two line firefighters and an office technician. These cuts did not significantly reduce service levels since there is sufficient paid staffing for 2 fire engines and an ambulance 24 hours a day, seven days a week. However, the District reports that its Resident Firefighter Program has provided an increase in daily staffing from the contracted 2 person per engine/per station staffing to a 3 person staffing per engine per station greater than 95% of the time.

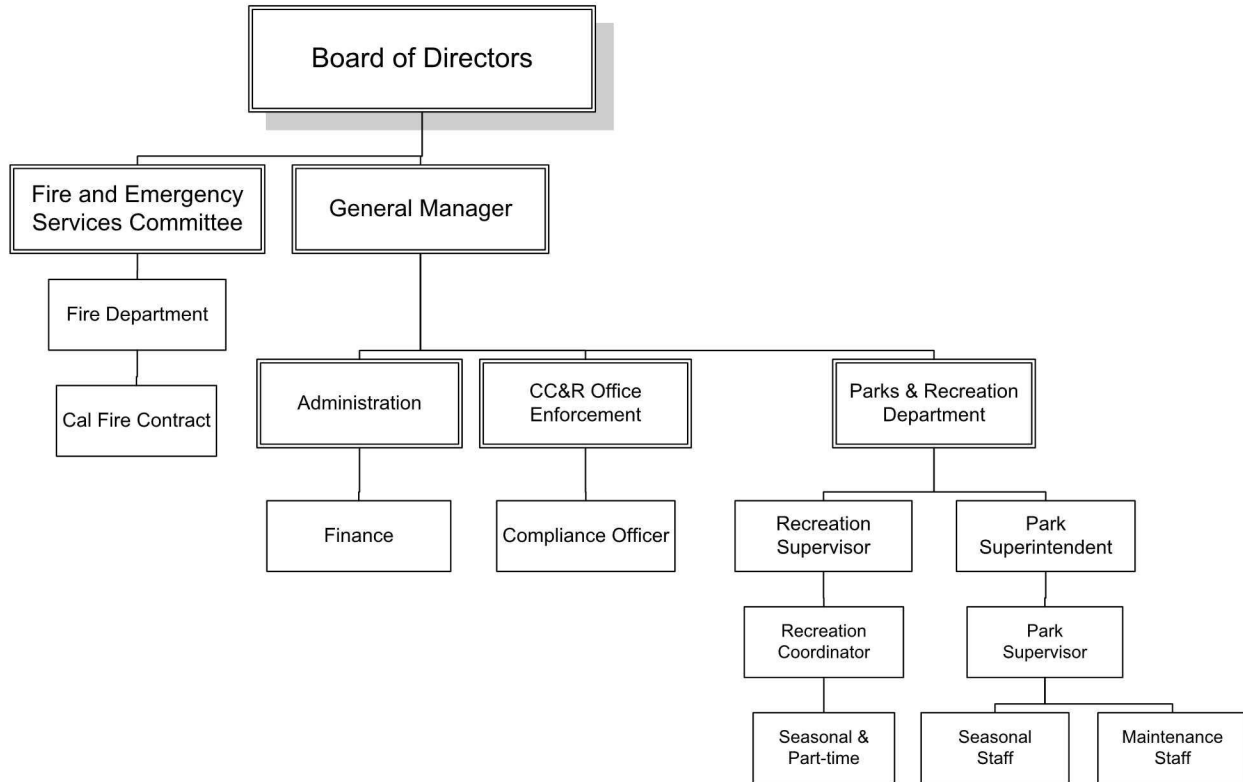
The Cameron Park Fire Department provides paramedic service from both stations 24-hours a day, seven days a week. Fire personnel work a 3-day, 72-consecutive hour shift per week. The minimum "24-hour staffing" consists of two firefighters per engine at each station plus an ambulance crew of two. Both stations operate with ALS qualified staffing at all times; typically one of the two staff is a paramedic.

CAM sends CAL FIRE firefighters and volunteers to an annual one-week refresher course for HazMat and Basic Life Support (BLS) training. CAL FIRE personnel assigned to CAM also participate in state training courses that the district sometimes sponsors or splits the cost. The state administers annual performance tests for fire ground evolutions and drills. CAL FIRE hosts a training academy in Amador County and also provides local training. CAM participates in and occasionally hosts joint drills each year with other fire districts in El Dorado County. Volunteers attend the County Volunteer Academy at Diamond Springs or an equivalent "in-house" Academy conducted by the CAL FIRE personnel in CAM.

Non-Fire Services

CAM also employs administrative employees that are shared between the "fire and emergency" and "parks and recreation" departments. Other CSD employees include a general manager, senior accountant, park superintendent, recreation supervisor, maintenance staff, seasonal staff, finance staff, CC&R enforcement officer, recreation coordinator, seasonal lifeguards, kiosk concession workers, various summer staff and front office assistant. The chart below represents CAM's organizational structure:

Cameron Park CSD Organizational Structure



Administration, Management and Operations

Board of Directors

The agency is governed by a five-member elected board of directors, elected at large, with four-year staggered terms of office. The board meets monthly on the third Wednesday of the month at 7:00 pm. Board members receive a stipend of \$100 per meeting, up to \$600 a month, but do not receive any other benefits. However, at its April 2012 meeting the Board voted to suspend the receipt of stipends until the end of June 2013.

Board members sit on standing committees for budget/finance, CC&Rs, parks and recreation, skate park, fire and emergency services and the fire safe council, in addition to various ad hoc committees. The District is a member of the California Special Districts Association and recently approved contracts with 3 attorneys who will serve as legal counsel. The CSD board of directors participates in conferences coordinated by the general manager.

In the past three years, the Board has come under fire by residents for several controversial actions. Prior to the completion of the new Community Center, residents complained both during Board meetings and in letters to the editor to the local newspapers that the Directors were too indecisive about the number of lanes the pool should contain. In June 2009, the then-General Manager, sued two board members for sexual harassment. She was soon placed on administrative leave and

ultimately dismissed. After that, questions arose over the amount of the legal bills charged to the district by its previous counsel. Over the past year, the Board has come under criticism over its March 2011 decision not to renew the contract of the previous general manager who was hired in May 2010 after a year-and-a-half search to replace his predecessor.

Administration—General

The CAM administrative offices are located at 2502 Country Club Drive in Cameron Park and open during normal business hours. The district as a whole, and each individual department, has their own mission statement, each of which can be read on CAM's website at [REDACTED]. District operations are separated functionally by department.

The Board of Directors appoints a general manager; however, the top management has been shuffled several times in the past nine years, with a new general manager appointed in 2003, 2004, 2005, 2008, 2010 and more recently with the announcement of Mary Cahill's hiring as the new GM in October 2011.

Property and liability insurance is provided through the California Special Districts Risk Management Authority (SDRMA). The California Special Districts Association provides insurance services through the Special District Risk Management Authority, a joint powers agreement among 290 special districts and other agencies. Insurance includes property and liability and workers' compensation.

Administration—Financial

The District is financed through property taxes for fire, park impact fees and assessments for CC&R and lighting districts. CAM makes its financial statements (back to Fiscal Year 2002-2003) and adopted budget (back to 2007-2008) available on the web. Its program and rental fee schedules are also available on the web.

The El Dorado County Auditor's Office does the accounting for CAM for a 1% property tax administration fee.

Fire Services

All fire services and staff are provided through the "Schedule A" contract with CAL FIRE. The CAL FIRE Unit Chief reports directly to the District Board and its fire committee. The CAL FIRE assistant chief of operations reports to the CAL FIRE Unit Chief, and supervises a CAL FIRE battalion chief who oversees the day-to-day operation and administration of the CAM Fire Department. The battalion chief supervises all of the CAM fire department staff. Personnel matters such as payroll, employee negotiations, benefits, etc, are all handled through CAL FIRE headquarters in Camino. Dispatch services are handled through the CAL FIRE dispatch center in Camino.

Parks and Recreation

The District charges fees for participation in recreation programs. These fees are intended to cover the costs of the programs. The District also charges fees for entrance into and for the use of Cameron Park Lake and the Cameron Park Aquatics

Center. Other revenue streams include the collection of park impact fees from new developments. Fees are used to purchase new parklands and to develop facilities and recreation areas. Due Prior to 2006, the District was not collecting sufficient fees to keep up with the demand for new parks, recreation areas and facilities. Consequently, the District completed a Park Impact Fee Nexus Study in November of 2006, analyzing the need for updated fees and estimates the most appropriate amounts for new park impact fees. The Park Impact Fees are covered in the budget section.

Street Lighting and Landscape

Landscaping and lighting service is provided to several lighting and landscaping assessment districts (LLADs) within Cameron Park Community Services District. Each LLAD pays a specific amount, based on the services provided, and the number of residents receiving the services. The fees levied for each district are covered in the budget section below.

CC&Rs

The District collects a fee of up to \$12 per parcel per year for the enforcement of CC&Rs within the District. The District also collects fees for architectural review in the enforcement of the CC&Rs. The charges will be covered in the budget section below.

Administration—Operations

Fire Service

The CAM Board directs the fire chief to prepare and maintain a strategic plan based on an analysis of incident history and projected growth within the District. In 2005, the CAM Fire Department changed from a 5-year strategic planning process to a more in depth 10-year master planning process. The 2005 through 2014 CAM Fire Department Master Plan was also provided to LAFCO. The master plan will be updated each year and contains the Fire Department's Capital Improvement Plan (CIP).

Call and Response Data

CAM records show a direct relationship between calls for service and district population. Because of the automatic aid agreement with neighboring fire districts, CAM fire personnel are dispatched to all emergency calls for which they are the closest resource. As the community continues to grow, both inside the LSAs and on the periphery of the Community of Cameron Park, the CAM Fire Department expects the automatic aid to grow disproportionately, unless the neighboring districts post staffed fire apparatus closer to the areas of Cameron Park which lie within their districts.

The following call data was collected from CAL FIRE's Camino Dispatch Center. These data are the calls generated within the district and do not necessarily include all of the calls that the district responded to with its own resources. In addition, the data were separated into two groups (2003-2005 and 2007-2008) in the table below because CAL FIRE switched computers in 2006 and data from that year are

irretrievable. The 2003-2005 historical data is provided here for descriptive purposes only. The definitions for the call categories are:

- Structure Fire – Any fire response with an ignition component to any structure or improvement on any parcel. This category does not distinguish between commercial or residential, but calls are not related to a vegetation or vehicle fire.
- Non-Structure Fire – Any fire response with an ignition component that does not involve an improvement. This would be a vegetation fire, an escaped control burn or an illegal control burn.
- Vehicle Fire – Vehicle on or off roadway as primary ignition component.
- Vehicle Accident – Vehicular collisions, involving either singular accidents or multiple vehicles.
- Medical Aid – Calls requiring medical aid, not related to a structure or non-structure fire or to vehicle accidents and fire.
- Haz-Mat – Calls related to hazardous materials.
- Good Intent – False Alarms accidental pulls, smoke checks, etc.
- Other – Miscellaneous calls not related to any other category.

Table 1: Cameron Park Community Services District Call Log

Incident Type	2003	2004	2005	2006	2007	2008	2009	2010
Structure Fire	25	40	28		41	43	18	14
Non-Structure Fire	31	40	34		14	18	15	12
Vehicle Fire	31	15	15		11	6	13	15
Vehicle Accident	102	107	103		99	81	75	60
Medical Aid	1149	1121	1175		1057	1072	1257	1286
HazMat	32	23	13		22	30	19	15
Good Intent/False Alarm	95	119	104		201	208	197	182
Other	218	230	193		21	19	31	23
Total Calls	1683	1695	1665	0	1466	1477	1625	1607

The current District policy is for the first emergency resource to arrive at the scene of a fire or medical emergency within eight minutes of receiving an alarm, 90% of the time (policy includes this requirement for areas within the service area). While the 2010 FESS did not evaluate how the District was meeting its own policy goal, Citygate’s independent evaluation used a slightly different criteria: Using the EMS system benchmark of having a unit on-scene by the 11th minute from the call being received, 90 percent of the time. Using this metric, Citygate calculated that about 80 percent of CAM receives coverage that meets the EMS system criteria. By the EMS system’s 15-minute mark, 90 percent measure, Citygate concluded 100% of the District is reached.

Funding and Budget

The discussion in this section is descriptive and amounts cited are approximate, based on information provided to LAFCO or available at the time of this report from other reliable sources. CAM is funded through a variety of sources, including property taxes, assessments, development impact fees, grants, Quimby Act land dedications/in-lieu fees, park entrance fees, program registration fees and facility rental fees.

Table 2: Cameron Park Community Services District Funding and Budget – Revenues

Revenues	2005-2006 Actual	2006-2007 Actual	2007-2008 Actual	2008-2009 Actual	2009-2010 Actual	2010-2011 Budgeted
Fund Balance*	\$777,652	\$414,385	\$13,350,543	\$8,293,889	\$5,907,345	\$6,063,382
Taxes	3,137,090	3,460,247	4,207,743	4,545,914	4,686,370	4,195,462
Property Taxes	3,059,090	3,382,175	3,884,491	3,654,054	3,829,277	3,360,700
Special Assessments	78,000	78,072	323,252	891,860	857,093	834,762
Licenses, Permits and Franchises	-1,279	14,820	0	153,777	154,225	151,620
Fines, Forfeitures and Penalties	1,902	2,756	0	0	0	0
Interest	16,787	22,305	610,164	230,229	23,058	20,003
Intergovernmental – State	37,166	37,012	0	0	0	0
Intergovernmental – Federal	0	0	0	0	0	0
Intergovernmental – Other	1,105,437	800,168	1,256,367	846,367	847,364	842,342
Development Impact Fees	309,703	416,366	398,818	0	0	0
Quimby Fees	0	188,615	0	0	0	0
Park and Recreation Services	216,192	190,618	185,639	260,077	431,726	571,370
Charges for Services	28,323	17,958	8,475	867,654	41,944	101,300
Miscellaneous Revenues	95,265	143,546	92,572	0	0	100,400
Total Revenues	\$ 5,724,237	\$ 5,708,796	\$ 6,759,778	6,904,018	6,184,687	5,982,497

* Starting in 2007-2008, the amount in the Fund Balance includes not just the carryover from the previous year but also funds from the Community Center Bond issuance. Starting with that fiscal year, the amount in Total Revenues will not reflect the amounts from Fund Balance

Total assessed value within the District was \$1,944,686,395 in FY 2011-2012. CAM currently receives an average 18.95% of the property tax revenue within district boundaries, which makes up the majority of incoming revenue for the district. Property tax revenues are allocated to each of the different CSD departments on an

as-necessary basis; however, the internal breakdown is approximately 70% for fire and emergency medical services, and 30% for administration and parks and recreation.

Fees

Fire Services

CAM has development impact fees of \$2,678 for residential units, and \$1.49 per square foot for commercial units (the same rate applies for units with or without sprinkler systems). Development impact fees were last updated on September 19, 2007, with the completion of a Park Impact Fee Nexus Study.

In September 2011, the District raised its fire prevention fees, which are used for such activities as teaching education programs in schools, plan checks, fire code analyses and inspections. Despite this increase, CAM reports its fees continue to be among the lowest in the region.

Park and Recreation Services

Park impact fees are collected from new developments. Fees are used to purchase new parklands and develop facilities and recreation areas. The district completed a Park Impact Fee Nexus Study in November of 2006, which analyzed the need for updated fees and estimated the most appropriate amounts for new park impact fees. The study was based on the Quimby Act and County standard of five acres of parkland per 1,000 population and the district’s own level of service standards for other recreational facilities. The fees were updated September 19, 2007, as shown below:

Table 3: Cameron Park Community Services District Park Impact Fees

Land Use Category	Parkland Acquisition Fee per Unit	Park Facilities Fee per Unit	Total Park Impact Fees
Single Family-Detached	\$3,037	\$4,984	\$8,021
Single Family Attached	\$2,248	\$3,690	\$5,939
Multi Family Unit	\$2,325	\$3,816	\$6,141
Mobile Home Unit	\$1,503	\$2,467	\$3,970

The district also charges fees for participation in recreation programs, which is intended to cover the costs of the programs, and for the entrance into and use of Cameron Park Lake.

Street Lighting and Landscaping

Each landscaping and lighting district pays a specified amount, based on the services provided, and the number of residents receiving the services. The fees levied for each district are shown below:

Table 4: Cameron Park Community Services District Lighting and Landscaping Assessment District Fees (as of 2010-2011)

District	Fee per parcel	Eligible for increase?
Airpark	\$63.02	no
Unit 6	\$54.50	no
Unit 7	\$36.18	no
Unit 8	\$36.20	no
Viewpointe	\$45.06	no
Goldorado	Determined by parcel size; \$21.29 to \$817.79	no
Unit 11	\$22.42	no
Unit 12	\$37.28	no
Cameron Woods 1-4	\$47.50	no
Bar J 15A Country Club	\$48.24	no
Bar J 15B Merrychase	\$190.04	no
Creekside	\$31.00	no
Eastwood	\$223.54	no
David West	\$147.37	Up to 5% per year or \$165 max.
Cambridge Oaks	\$14.88	no
Northview	\$324.00	no
Cameron Valley	\$106.52	no
Cameron Woods 8	\$108.82	Up to 3% per year
Silver Springs	0.00	Up to 4% per year

Covenants, Conditions & Restrictions Enforcement

Landowners in the district pay a \$12 property assessment, which is dedicated for CC&R enforcement. The district also has architectural review fees which range from \$35-\$270, depending on the service requested.

Table 5: Comparison of Architectural Review Fees

Description	Cameron Park CSD	El Dorado Hills CSD
New Home	\$270	\$770
Room Addition	\$100	\$300
Swimming Pool	\$100	\$195
Storage Shed	\$50	\$85
Roof	\$50	\$85
Exterior Paint	\$35	\$60
Fence, Retaining Wall	\$35	\$85
Landscaping	\$35	\$85
Tree Removal	\$35	\$60
Miscellaneous	\$35	\$60

Source: Cameron Park CSD, El Dorado Hills CSD

These CC&R fees are exclusive of any assessments for residents whose home also sits in an overlapping LLAD.

Grants

No grants have been received by CAM since 2005

Expenditures

Table 6: Cameron Park Community Services District Funding and Budget – Expenditures

Expenditures	2005-2006 Actual	2006-2007 Actual	2007-2008 Actual	2008-2009 Actual	2009-2010 Actual	2010-2011 Budgeted
Salaries and Benefits	\$ 3,089,668	\$ 2,841,770	\$ 640,649	\$ 707,593	\$ 737,207	\$ 921,109
Salaries/Wages	2,922,084	2,629,982	411,022	461,742	487,800	635,245
Retirement and Other Benefits *	72,796	91,967	105,970	111,746	115,794	135,897
Health Benefits	86,737	114,039	119,772	130,756	130,150	147,818
Workers' Comp Insurance	8,052	5,782	3,885	3,349	3,463	2,149
Services and Supplies	1,656,037	1,037,559	3,893,576	3,862,292	5,056,932	4,327,144
Debt Repayment	1,285	57,329	50,000	75,000	100,000	100,000
Other Charges	0	0	368,298	364,810	361,748	358,123
Fixed Assets **	562,86	836,24	3,055,049	6,951,056	2,315,229	120,084
Total Expenditures	\$4,746,990	\$3,936,658	\$8,003,687	\$11,957,402	\$8,567,653	\$5,824,311

* Includes Disability, Medicare, Unemployment, and Flexible Benefits

** Includes Buildings and Improvements, Infrastructure Acquisition, Construction Rentals, and Equipment

As a percentage of total expenditures, the reported amounts for Salaries and Benefits have decreased dramatically in the past five years, going from 65% of expenditures in FY 2005-06 to under 16% in FY 2010-11. Expenditures for Services and Supplies have increased, as expected, with the opening of the Cameron Park Community Center.

CAM has taken on an \$8 million bond in 2007 for the construction of the new Community Center and swimming pool.

Cooperative Agreements

Cameron Park CSD participates in numerous cooperative agreements with other agencies, including California Mutual Aid Agreement, Regional Chief's Mutual Aid Agreement, Five-Party Cooperative Agreement-El Dorado County Western Slope Fire Services Mutual Aid Agreement and CSA #7-El Dorado County Contract for Pre-Hospital ALS and Dispatch Services. The district has informal agreements with community groups and other agencies. It works closely with the Fire Safe Council and El Dorado County Environmental Management Department on hazardous materials issues and incidents.

Boundaries

El Dorado LAFCO adopted an original sphere of influence for Cameron Park CSD in 1998, in which its sphere study discussed boundary issues, and subsequently amended in 2008, with minor expansions in the "limited service area" (LSA) sphere of influence. It must also be noted that neither district boundary matches the Cameron Park Community Region as designated in the County General Plan (refer to Map 4).

These LSAs were created to defuse a potential political conflict between the fire districts. In July 1998, the El Dorado County Fire Chiefs' Association went so far as to adopt a resolution opposing the shifting of property taxes from one district to another or for the changing of boundaries "every time a district constructs a new station that will also serve areas of a neighboring district."

However, since 1998, with the subsequent completion of "limited service" annexations, two distinct service areas have been created for the CSD. The majority of the district receives all services from CAM. In the LSA portion of the district, the residents receive non-fire CSD services. Fire services in the LSA are provided by other fire protection districts: Rescue FPD (RES) in the northwest and El Dorado County FPD (ECF) to the east and south.

At the time of these "limited service" annexations, detachments from RES and ECF were considered, but not approved, by LAFCO. Hence, CAM's fire and recreation functions each serve different service areas by allowing CAM's recreation boundaries to overlap other fire districts. The only time LAFCO refused to split CAM's services in a new annexation was in 2006, when the Bell Woods II project was annexed into CAM's boundaries for all services. Because the Bell Woods area was a service area "hole," that is, not belonging to any fire district, made LAFCO's actions possible.

As population growth and call volumes in the Cameron Park area continue, the boundary/service mismatch may increase, with CAM providing mutual aid as the nearest available unit to growing areas outside its boundaries for fire. This is anticipated to have significant financial effects on the district.

While the creation of the LSA may have defused conflicts between the fire districts, it has not been entirely peaceful for park services. The aforementioned Bell Woods II project pitted CAM against the El Dorado Hills CSD (EDHCSD). There are lands soon to be developed in the “conflict zone” between CAM and EDHCSD that is in neither of these district’s spheres of influence. The Campobello project was the first, but there may be others in the near future, namely the Springs Equestrian Center project. These conflicts will continue to arise as long as the governmental boundaries do not coincide with the community boundaries. Consideration should be given to having the CSD’s boundaries, either for all services or just the LSA, match the community region as defined in the County General Plan.

Officials at CAM have expressed an interest to LAFCO staff for CAM’s service territory to expand eastward and encompass Shingle Springs. To date, no analysis has been undertaken by either LAFCO or the District to explore the feasibility of this proposal.

IV ENVIRONMENTAL REVIEW

The California Environmental Quality Act (CEQA, Public Resources Code §21000 et seq.) requires public agencies to evaluate the potential environmental effects of their actions. OPR's Service Review Guidelines Chapter 7, *Integrating Municipal Service Reviews with the California Environmental Quality Act*, advises that "no two municipal service reviews will be exactly alike and each needs to be evaluated on its specific merits and characteristics." The environmental review for El Dorado LAFCO's Service Review of the CAM is specific to this study and may differ from the environmental review of other service reviews and other LAFCOs.

Service reviews are intended to support sphere of influence updates, including the creation and amendment of SOI boundaries, as well as other government reorganization proposals. Such activities could influence future growth patterns and, as such, are considered discretionary projects under CEQA. LAFCO has the principal responsibility for carrying out and approving this service review and, therefore, the principal responsibility for preparing CEQA documents as lead agency.

Exemption

This service review and accompanying sphere of influence determinations qualify for a statutory exemption as outlined in Public Resources Code §15061(b)(3). These activities are covered by the general rule that CEQA applies only to projects which have the potential for causing a significant effect on the environment. Where it can be seen with certainty that there is no possibility that the activity in question may have a significant effect on the environment, the activity is not subject to CEQA. The MSR and sphere of influence update have no possibility for causing a significant effect on the environment. Any future projects that make use of this service review and the information contained herein will be subject to separate environmental review under CEQA.

V ENVIRONMENTAL JUSTICE

State law defines environmental justice as “the fair treatment of people of all races, cultures, and incomes with respect to the development, adoption, implementation, and enforcement of environmental laws, regulations, and policies” (Government Code §65040.12(e)). OPR explains that “as the primary agency with responsibility for approving changes in boundaries, LAFCOs play an important role in coordinating growth and ensuring that proposed changes are consistent with environmental justice obligations.” Changes of organization must be consistent with spheres of influence, and the information contained in this service review will guide future updates to agency spheres of influence.

OPR identifies several uses for data obtained in the service review process:

1. Improving the community participation process.
2. Identifying low-income/minority neighborhoods under-served by public facilities and services that enhance the quality of life.
3. Considering the equitable distribution of public facilities and services.
4. Considering infrastructure and housing needs.
5. Identifying low-income/minority neighborhoods where facilities and uses that pose a significant hazard to human health and safety may be over-concentrated.
6. Screening of issues for potential environmental justice implications.

Consideration of the issues listed above will assist LAFCO and other public agencies in identifying, preventing, and reversing historical problems of procedural and geographic inequity. In undertaking this service review and making the nine determinations, LAFCO used an open public participation process to screen for and identify environmental justice issues.

Demographic data for the study area is limited and generally does not clearly distinguish between population groups of different races, cultures, and incomes. The most recent data available, from the 2000 Census, shows the following racial populations in the census communities. The census area boundaries do not correspond to agency boundaries or General Plan Community Region boundaries, but the data provides a demographic framework for the evaluation of environmental justice issues. Statistically significant populations of Hispanic/Latino (of any race) are located in the cities of Placerville (12.6%) and South Lake Tahoe (26.7%).

Data is available from the El Dorado County Office of Education regarding ethnicity of student populations. These statistics are based on school attendance areas and school districts. For school areas generally, the data confirms that minority populations tend to be small and dispersed throughout the county. The largest ethnic minority population listed is Hispanic/Latino in low percentages (4-9%) in the unincorporated areas and statistically significant Hispanic/Latino populations in the two cities (e.g. approximately 32% in Lake Tahoe Unified School District and approximately 13% in the Placerville Union School District).

The El Dorado Community Foundation recently conducted a study of the needs of Latino populations in the county. The Foundation estimated that the Latino population of El Dorado County might be about 24.7% of the total county population. Census data above notes 14,566 Hispanic or Latino persons in the county population, about 9.3%. Spanish-speaking volunteers conducted a home-based survey in areas where clusters of Latinos live near one another in Placerville-Pollock Pines and Cameron Park. Their analysis was more anecdotal and identified only small clusters of Latinos population groups.

The demographic data from the census suggests that the unincorporated county is relatively homogenous with low numbers of racial or ethnic minorities counted. Income data available from the census does not suggest that there are low income population concentrations in the countywide study area. While service levels vary greatly within the county, no specific ethnic or economic neighborhoods could be identified by LAFCO staff that are underserved by public facilities. Infrastructure and housing distribution is relatively even throughout the developed areas of the county with much lower levels of infrastructure and housing in the more outlying communities. No low income/minority neighborhoods were identified where facilities and uses pose a significant hazard to human health and safety.

The 2004 County General Plan does not address environmental justice directly. Although the Environmentally Constrained Alternative did contain related land use and housing policies, the 1996 Alternative and the 2004 General Plan do not contain those sections. The 2004 General Plan Housing Element includes Goal HO: “To provide housing that meets the needs of existing and future residents in all income categories.” The housing element also discusses the following special needs groups: people with disabilities, seniors, agricultural employees, female heads of households, homeless persons, and large families and households.

Table 7: Study Area Population by Race

Area	Total	RACE							Hispanic or Latino (Of Any Race)
		White	Black or African American	American Indian and Alaska Native	Asian	Native Hawaiian and Other Pacific Islander	Some Other Race	Two or More Races	
El Dorado County	156,299	140,209 (89.7%)	813 (0.5%)	1,566 (1.0%)	3,328 (2.1%)	209 (0.1%)	5,547 (3.5%)	4,627 (3.0%)	14,566 (9.3%)

Source: 2000 Census

Percentages may not add due to rounding

VI SERVICE REVIEW ANALYSIS AND DETERMINATIONS

As explained in Section II of this report, State Law requires the Commission to make certain determinations in an MSR (Government Code §56430) and prior to establishing an SOI (Government Cod §56425). The Commission’s Policies & Guidelines Section 4.4 also requires additional determinations prior to establishing a sphere. To the extent that is feasible, both sets of determinations will be addressed in this section. In addition, the following sections will detail the meaning of each factor and explain how it applies to the fire suppression and emergency services agencies.

1. Growth and population projections for the affected area.
Purpose: To evaluate service needs based on existing and anticipated growth patterns and population projections.

Information in this section addresses #3 and #4 of LAFCO Policy 4.4, which are:

- Topographic factors and areas of social and economic interdependencies.
- Existing and planned land uses, land use plans and policies, consistency with county and city general plans, and projected growth in the affected area.

Most of the District’s territory is built-out with high-density residential development as the dominant land use, resulting in a high population density relative to the extensive undeveloped areas surrounding the District. The 2010 FESS estimated the CAM *fire service* population to be 16,331. LAFCO staff estimates the LSA contains an additional 1,000 people.

In 2010, the US Census calculated a “community” population of 18,228 for Cameron Park, though this number is based on a “census-designated place” (CDP), which it is a concentration of population identified by the United States Census Bureau for statistical purposes. However, the El Dorado Surveyor’s Office applied these data, at the parcel level and estimated the CAM population by calculating the average household population and multiply number of developed residential or multi-family parcels within the CSD. This resulted in an estimated Cameron Park CSD population of 18,878, which is consistent with the CAM’s Master Plan projection a population of no more than 20,000 by the year 2010.

Table 8: 2000 and 2011 Census Population Count of the Cameron Park CSD

El Dorado County	2000	2010
Cameron Park	14,549	18,228

Growth in Demand for Fire Protection and Emergency Services

The 2011 *Fire Suppression and Emergency Services MSR (2011 Fire MSR) and SOI Study* (adopted by the Commission on June 22, 2011) explained that, countywide, El Dorado County’s population is growing significantly older and its working age population increasing its commuting times (as measured by vehicle miles traveled)

annually. If some or all of these trends come true, then impact to the County's fire and EMS service in general, and to CAM in particular, is significant:

- An older population means that there will be a smaller volunteer pool and an increase in demand for ambulatory services.
- Higher congestion means less people in the community to volunteer and a higher likelihood of an increase in collisions. It also would mean that rural areas will also have more commuters who would be unavailable to volunteer on weekdays between the hours of 6 am and 6 pm.
- The population and fiscal disparity between the more urbanized areas (El Dorado Hills and Cameron Park) and the County's more rural areas will become wider.
- Increase in service demand due to a higher number of calls for ambulatory service. This would impact CAM in particular due to the presence of the Eskaton Lodge, the Ponte Palmero Retirement Village (which includes independent living, assisted living, and a memory care center), New West Haven I and II, The Marshal Hospital Annex and Surgery Center, as well as other planned future senior retirement housing projects, due to their increasing impacts on the emergency services delivery within the District..

If all things true today remain the same, with lower revenues and a lower volunteer base, rural districts will struggle to adequately staff fire stations and to meet response times, placing a greater burden on neighboring districts to render aid. As it will be shown later in the study, CAM already has a high mutual aid "balance," meaning it renders mutual aid at a higher rate than it receives from other districts.

The 2010 FESS discussed the growth pattern and the challenges to countywide fire service, with its conclusions mirroring those of the 2006 MSR:

"The current El Dorado County fire service deployment system has served the community well in the past, but is now increasingly strained to handle a singular serious event, or multiple serious events in the same sub-area and to provide equitable coverage in all areas with similar population densities. The County is no longer a quiet farming or recreational only area. The foothills have become a favorite place for suburban development."

From a fire risk perspective it concluded:

"Since usual and customary zoning has placed buildings throughout the County, this places additional pressure to have a multiple-unit effective response force of pumpers and, also importantly, ladder trucks throughout the more intensely developed areas."

Growth in Demand for Park and Recreation Services

As a densely built, urban district, CAM will continue to experience a high demand for services and programs designed for families and seniors. Use of their parks and facilities, such as the Community Center, will be constant and possibly increase as the parcels within and surrounding the district are developed. CAM has a total of 60.3

acres of active and developed land parks and 45.0 acres of active water recreational areas. With a policy in place of 5 acres of developed parkland per 1,000 people and 5 acres of open space per 1,000 population, CAM is currently not meeting its stated goals. However, with 20.1 acres of undeveloped parklands in its inventory suggests it will have sufficient park and open space land to meet the demands of its current population.

Growth in Demand for Lighting and Landscape, CC&R Administration and Other Services

Because the CAM's core is already mostly developed in a high density residential pattern, current demand can be both projected and anticipated within existing LLADs. Planning for these services in the undeveloped parcels is harder to do because it depends on the type of project being developed. Some developers prefer building standard suburban developments with streetlights and tight design standards that are expected to be continued in the future. Other developers may have some of these elements in place, but with less rigorous enforcement. Given that LLADs and CC&R administration are self-funded through its fee structure, it is estimated that CAM should be able to absorb growth in these services with minimal impact to its staff levels.

2. Present and planned capacity of public facilities and adequacy of public services, including infrastructure needs or deficiencies.

Purpose: To evaluate the infrastructure needs and deficiencies of a district in terms of capacity, condition of facilities, service quality, and levels of service and its relationship to existing and planned service users.

Information in this section addresses #1 and #6 of LAFCO Policy 4.4, which are:

- Service capacity, level and types of services currently provided by the agency, and areas where these services are provided.
- A description of the services that will be provided to any areas which may be added to the sphere and the timing and method for funding expansion of facilities or services.

CAM's infrastructure consists of 125.4 acres of active parks and unimproved park sites and open space, 790 street lights, two fire stations with related fire and emergency services equipment and vehicles and one Community Center.

Fire and Emergency Services

In the context of fire and emergency services, infrastructure needs and deficiencies signify whether facilities provide adequate capacity to accommodate current or projected demand for service in the county as a whole or in a particular area or region. The infrastructure elements of fire protection and emergency services include facilities (stations), rolling stock (engines and ambulances), dispatch systems, water supplies and roadways. Service also depends on trained personnel. Adequacy of

service can be understood by reviewing response times, coverage, staffing (including training and staffing levels per capita) and mutual aid.

The principal facilities for fire protection are stations. The 2010 FESS found that CAM's stations were well placed, indicated that 80% of the district has a unit on the scene by the 11th minute of the call being received, with 100% of the district is reached by the 15th minute. Another measure for coverage is the ISO rating. CAM's rating is 5 for areas within 1,000 feet of a fire hydrant and 9 for other areas.

In terms of staffing, Cameron Park CSD's Fire Department staffs, on average, at slightly more than 2.0. As indicated in the previous paragraph, that is sufficient to respond adequately to calls within CAM's boundaries. However, when it comes to the county fire and EMS service as a whole, as Citygate notes that "El Dorado County has a weight of attack problem. There are currently not enough on-duty firefighters Countywide plus paid-call firefighters and volunteers responding *quickly* to keep potentially serious emergencies contained and small, particularly if the paid-call firefighters and volunteers cannot provide an immediate response to fill out the necessary staffing."

Weight of attack means the ability to assemble a sufficient number of firefighters in a reasonable period of time to control the emergency safely before it escalates to greater alarms. As demonstrated in the *2011 Fire MSR*, CAM and its fellow fire agencies are currently structured and staffed at levels where reinforcements must be called if the initial respondent engine cannot control or contain the emergency: volunteers are paged and backup engines from neighboring stations and districts must render assistance. The additional deployment of resources comes at the cost of precious time. By the time reinforcements have arrived at the scene, several additional minutes have passed. Citygate warns, "An under-staffed, and/or under-led token force will not only be unable to stop a fire, it also opens the County up for liability should the Fire Departments fail."

This finding is buttressed by the call data. At least 20% of CAM's responses are mutual aid-related. In addition, as demonstrated in Appendix D, CAM has one of the highest mutual aid balances (net mutual aid given to mutual aid received) in the Western Slope. The tables below show the aggregate mutual aid numbers from 2007 through 2010. Appendix D contains more detailed mutual aid numbers by incident type for the Western Slope agencies:

Table 9: Western Slope Mutual Aid Given

Emergency Call Statistics				
Mutual Aid Given				
Districts	2007	2008	2009	2010
Cameron Park CSD	450	564	463	410
Diamond Springs/El Dorado FPD	589	593	484	436
El Dorado County FPD	685	550	525	567
El Dorado Hills County WD	251	234	148	152
Garden Valley FPD	161	149	125	144
Georgetown FPD	200	188	184	134
Latrobe FPD	86	70	55	39
Mosquito FPD	13	21	6	14
Pioneer FPD	78	88	50	38
Rescue FPD	248	254	225	203

Table 10: Western Slope Mutual Aid Received

Emergency Call Statistics				
Mutual Aid Received				
Districts	2007	2008	2009	2010
Cameron Park CSD	275	265	250	212
Diamond Springs/El Dorado FPD	437	304	294	422
El Dorado County FPD	1068	1072	930	864
El Dorado Hills County WD	152	145	125	131
Garden Valley FPD	162	190	195	131
Georgetown FPD	77	96	90	88
Latrobe FPD	22	26	22	34
Mosquito FPD	24	32	24	17
Pioneer FPD	109	119	94	71
Rescue FPD	222	231	241	167

Mutual aid greatly enhances services to the residents of the county because it guarantees that a response will be received by the closest available resource regardless of jurisdictional boundaries. On the other hand, while firefighters have an overall mutual respect for each other and an agency’s mission may not directly address financial equity, costs are incurred during mutual aid calls. Most fire chiefs have noted that mutual aid agreements have a real fiscal cost in that they can put a strain on an agency’s resources, both from the perspectives of maintenance to equipment and coverage.

This is where an agency’s financing, and age of equipment and stations converge with coverage and agency boundaries. Speaking broadly, if an agency has healthy

revenues, it has the necessary finances to maintain equipment within NFPA standards and hire sufficient personnel to maintain good coverage across all of its stations 24 hours a day, 7 days a week, 365 days a year. Conversely, inadequate finances mean equipment that is older than ideal and more reliance on volunteers to ensure coverage throughout the day. Agencies in the latter category can, and still do, provide adequate coverage. There should be no mistake that El Dorado County agencies are currently providing service consistent with their community standards. But living with insufficient revenues means less room for error while having to keep up with increasing service standards, especially in the current economic climate that has led to depressed revenues. Districts in the latter category are one call away, or one piece of equipment away, from being unable to respond to a call. When that occurs, a neighboring agency steps in to respond. This, in turn, stretches the neighbor's resources and adds further stress to the overall system. If the problem is chronic, then realignments to the service areas may be warranted.

Park and Recreation Services

The District has an estimated population of 18,878 persons. As indicated in the "Growth and Population" section, CAM currently has a deficit of developed park acres per its policy of 5 acres for every 1,000 people. Using this standard, CAM's population requires 94 acres of developed parks to meet demands. The District actually has 56.2 acres of community parks. Since the publication of the Master Plan, the District has obtained some lands through the development impact process; however, these lands are generally small neighborhood parks and have not yet been constructed into recreational facilities nor significantly increased the overall acreage of parklands.

The Master Plan discusses the park needs of a 2008 population of 18,474, which is close to the projected needs of the current population. The Master Plan shows the required parklands for this population are 37 acres of neighborhood parks, 57 acres of community parks and 92 acres of open space. Given that the District has not had a significant increase in parklands since the time the report was published, either through the purchase of new lands or the dedication of parks as part of the development process, the District now has a greater deficit in parklands. Based on the amounts of parkland owned by the District in 2010, the Master Plan projects a deficit of 12.6 acres of neighborhood parks, 42.2 acres of community parks and 44 acres of open space.

CAM provides recreational programs at facilities located throughout the District. The District's Master Plan indicates a lack of facilities for recreational programs. In 2000, most programs were located in the Cameron Park Community Center and local schools, such as Camerado Springs and Blue Oak schools, which were rented on an hourly basis. Now, with the completion of the Community Center, almost all most of the District's need for additional recreation facilities, with sufficient available parking, have been alleviated.

Lighting and Landscaping, CC&R Administration and Other Services

The District maintains street-lighting and landscaping equipment and facilities through sub-districts called LLADs. Each year the District completes a Landscaping and Lighting District Engineer’s Report (Engineer’s Report), to assess the needs of each LLAD, and determine appropriate changes in fees. The following table lists CAM’s street lighting facilities:

Table 11: Cameron Park CSD Street Lighting Facilities by District

Sub-District	Streetlights	Landscaping
Airpark	118	
Unit 6	112	
Unit 7	75	
Unit 8	88	
Viewpointe	42	
Goldorado	23	
Unit 11	44	
Unit 12	76	
Cameron Woods 1-4	42	
Bar J 15A Country Club	105	Landscaping etc.
Bar J 15B Merrychase	8	Landscaping etc.
Creekside	12	
Eastwood	9	Landscaping etc.
David West		Landscaping etc.
Cambridge Oaks	9	
Northview	10	Landscaping etc.
Cameron Valley	9	Landscaping etc.
Cameron Woods 8	8	
Silver Springs	0	
Total	790	

Street lighting maintenance is performed by PG&E, though power is paid for by CAM. Landscaping services include irrigating landscaped areas and trees, maintaining concrete walkways and other outdoor features, maintaining recreational areas including: picnic tables and dog walking areas, and sidewalk installation and improvements. Landscaping services and, therefore, fees are neighborhood-specific and vary among the LLADs.

CAM did not indicate any deficiencies in service to the street lighting and landscaping areas. However, CAM staff report that the fees have not kept up with the costs of providing services. The draft 2011 Engineer’s Report for several LLADs recommends raising rates. For those LLADs that are already charged the maximum rate under the current covenant, CAM will have to hold an election to get the approval from the home and landowners within the LLAD to raise their rates.

The District does not appear to require capital or infrastructure in order to enforce CC&Rs. The 2007 General Government Services II Municipal Services Report noted at the time that CAM needed “[O]ffice space for one CC&R enforcement officer and a vehicle.” However, this was before CAM had built its Community Center. The Community Center now houses all of the district’s administrative offices and contains plenty of parking. The District has no identified infrastructure needs or deficiencies.

3. Financial ability of agencies to provide services.

Purpose: To evaluate factors that affect the financing of needed improvements

4. Status of, and opportunities for, shared facilities.

Purpose: To evaluate the opportunities for a jurisdiction to share facilities and resources to develop more efficient service delivery systems.

Information in this section addresses #2 of LAFCO Policy 4.4, which is:

- Financial capabilities and costs of service.

A successful financing plan for government services requires the right match between the type of expense and the source of funds. Types of expenses generally fall into one of three categories: (1) acquisition of facilities and major capital equipment (2) employee expense (3) ongoing operations and maintenance. Sources of revenue for local agencies include:

- Existing residents/taxpayers who provide ad valorem property taxes, special tax and benefit assessment district funding, funds to repay general obligation bonds, certificates of participation, and loans.
- Future residents in the form of development impact fees, and property tax increment growth.
- Users who pay fees for specific services such as facilities rental fees, administration fees, plan check fees, etc.
- Groups or individuals who volunteer time or donate money or land.
- Grants from the Federal or State government and other entities.

Funding Sources

Fire and Emergency Services

Fire is provided by CAM through agreements with CAL FIRE. Emergency services are provided through agreements with the County Emergency Medical Services Agency and the El Dorado Emergency Services Authority (West Slope JPA). Funding for these services is primarily dependent on property taxes as a stable and discretionary source of revenue. As stated earlier, CAM currently the average property tax percentage is 18% of the 1% property tax with the Fire Department receiving approximately 70% of the District’s property tax receipts. However, CAM is experiencing the same thing as other fire districts: property tax amounts have diminished to the point they are insufficient to fund major capital improvements and

their associated increase in operation and maintenance costs. Since the 1978 approval of Proposition 13, the sufficiency of these revenues has steadily declined; first because it removed the local government's abilities to raise revenue and later because the rate of increase is locked at 2% annually unless the property changes hands.

Unlike some of its fellow districts, Cameron Park CSD benefited financially during the building booms of the late 1980s and early to mid 2000s because of rapid urbanization and high turnover in landowners. But as the economy soured and some property values tumbled, CAM has been hard hit. In addition, because it is mostly built out, CAM may not see another period of skyrocketing revenue growth when the economy recovers. There will be development in the infill parcels, but eventually the district will settle into a pattern of little or no growth.

In the past CAM has asserted that it is not receiving its share of property taxes. In 2007 the CSD filed a writ against the County of El Dorado, but the matter was settled out of court. It is estimated that the lawsuit cost CPCSD about \$200,000 in legal fees plus Board time, staff time and other resources. Under the terms of the settlement that was signed off by a judge on March 16, 2012 the district will not receive any back payments, but when property in the district appreciates in value, the district will receive 8 percent of future tax increments.

Development Impact Fees (DIFs)

These fees are charged to developers when building permits are issued to secure advanced funds for the expansion of existing facilities or construction of new facilities needed to serve new development. Fees are based on a nexus study that identifies the relationship between new development and the cost of new facilities and improvements. These fees are also used to partially fund existing programs and services based on the degree to which new users, both residential and commercial, will increase demand.

California Health and Safety Code §13916 prohibits fire protection districts from imposing DIFs. Consequently, DIFs are adopted by the County Board of Supervisors on the agency's behalf. As defined in County Ordinance 13.20.020, a fire suppression and emergency service agency in the unincorporated area must request that the Board of Supervisors adopt the fee, and the Board must hold a public hearing on the adoption. The Board must review the fee annually and the district must update its plan annually. These can partially offset the cost of services, but cannot cover underlying operational expenses, such as overhead, capital costs and stand-by (readiness) costs.

Certain types of development may be exempt from impact fees, such as senior housing projects and non-residential development. Residential and commercial DIFs charges are based on square footage.

EMS Funding

CAM is a "provider agency" for the West Slope JPA and annually submits a budget to the JPA Board of Directors for approval. It receives funds from the County for

personnel, operating expenses, equipment and administrative overhead. Funding for emergency medical services is determined by the County Board of Supervisors based upon the recommendations of the West Slope JPA Board of Directors.

Provider agencies benefit in two ways. First, providers tend to have increased staffing (e.g. firefighter paramedics) and provide higher levels of service across the board. Second, the presence of the firefighter/paramedics allows for a more diversified skill base that exposes the regular firefighters to new cross-training opportunities. Communities also benefit because the EMS funds allow the districts to hire more personnel than they would have if they relied on district-generated revenue sources alone.

Currently CAM operates an ALS engine at its expense. These engines help the West Slope JPA with medical response times in remote areas but are not compensated by the JPA accordingly.

Grants

Grant income is subject to State or Federal planning priorities or voter discretion. As such, local agencies have little or no authority over the availability of this funding source. Grant money is a one-time source that is useful in funding certain special projects but may be too unreliable or variable for ongoing expenses or recurring needs. Grants have helped get funding for items that would have to be purchased out of budget in the past, but as noted above CAM has not received a grant since 2005.

Combining the size of the reserve, stability of revenue sources and the unmet capital needs, Citygate made the following judgments regarding the fiscal and deployment conditions based on its analysis of the EDC fire agencies:

Table 12: Fiscal and Deployment Condition of the Fire Agencies

Best Condition	Modest Condition with Stretched Services	Unstable Condition
Cameron Park Diamond Springs/El Dorado FPD El Dorado Hills County Water District Lake Valley FPD Meeks Bay FPD South Lake Tahoe FD	El Dorado County FPD Rescue FPD	Fallen Leaf Lake CSD Garden Valley FPD Georgetown FPD Latrobe FPD Mosquito FPD Pioneer FPD

Unlike other agencies, CAM's call data indicates the frequency of calls have remained steady since 2003, although the district did experience a dip in calls between 2007 and 2008. Consequently, CAM is not under fiscal pressure as other fire agencies that are finding that with an increase in service demand, previously adequate funding arrangements may no longer be adequate to sustain service levels.

Park and Recreation Services

Park services are financed through property taxes, user fees and park impact fees.

Recreational Programs

For recreational programs, the District charges fees used to offset the costs of the programs. The District also charges fees for entrance into/use of Cameron Park Lake. Because the fees charges are a function of the cost to provide the programs, CAM has the ability to collect sufficient funds to continue offering these services.

Park Impact Fees

The District collects park impact fees from new developments, which are used to purchase new parklands and develop facilities and recreation areas. The District completed a Park Impact Fee Nexus Study in November of 2006 that analyzed the District's need and estimated the most appropriate amounts for these updated fees.

The Nexus study was based on the Quimby Act and County standard of 5.0 acres of parkland per 1,000 population and the District's own level of service standards for other recreational facilities. The nexus study used other inputs to calculate its fees, including these service standards and the costs to purchase and develop land with parks and recreational facilities. Table 3 above contained the CAM's park impact fee amounts.

While these fees were updated four years ago, it is not likely that the District would be able to raise sufficient funds to purchase sufficient new parks to offset anticipated demand. CAM is already behind in its target number of developed parks per capita; though, as indicated earlier, it has sufficient land in reserve at the moment to meet its target goals for the *current* population. In high economic times, CAM is collecting park impact fees but land values are constantly going up, so it may not collect sufficient funds to purchase land unless a developer donates it to the district. In slow economic times, land values may be depressed or more reasonable, but there is little development activity to generate the funds. Consequently, CAM is continuously playing a "catch up" game with land values. In addition, it is very possible that the new parks will be found along the periphery of the District given that the Community of Cameron Park is mostly built out.

Lighting and Landscaping, CC&R Administration and Other Services

The District is financed through assessments for CC&R and lighting districts.

Lighting and Landscaping Services

Landscaping and lighting service is provided to several LLADs within Cameron Park CSD, each paying a specific amount based on the services provided and the number of residents receiving the services. An Engineer's Report is prepared annually to determine total costs and to adjust the level of the fees to be assessed for that year. The fees levied for each district were shown in Table 4 and facilities within each LLAD shown in Table 11.

As explained, most of these fees are set from the onset of the LLAD, negotiated between a developer and the CSD prior to the development or completion of the neighborhood, and only a few of these fees have consumer price indicator (CPI) escalators. There were no reserves or maintenance and capital improvement built into these fees.

Historically, maintenance and administration costs were below the fees or the cap. Lately, CAM is finding that the majority of LLADs do not generate sufficient revenues to cover the costs of providing the service as determined by recent Engineer's Reports. CSD staff has met with these neighborhoods to explain the costs and the need to raise the amounts being charged to each household. The public outreach is critical for the residents to understand the charges, where the monies go and the need for a potential fee increase.

The process is that the CAM Board of Directors calls an election and ballots are sent to the residents within the LLAD. A majority of the ballots returned determine the outcome. Should residents defeat a fee increase, the Board may take some drastic actions to stay within budget, which may include shutting down some street lights, deferring landscape maintenance or delays in repairing facilities.

CC&Rs

CAM is responsible for the approval of structural and cosmetic changes to property that is subject to CC&Rs. As Table 5 showed, the District imposes an "architectural review fee" for the service, though it does not have a formal policy for setting this fee. The fee is voter approved and will need to be brought back to the voters if it needs to be adjusted.

5. Accountability for Community Service Needs, Including Governmental Structure and Operational Efficiencies

Purpose: To consider Government structure options, including advantages and disadvantages of consolidation or reorganization of service providers; an evaluation of management efficiencies; and local accountability and governance.

Information in this section addresses #7 of LAFCO Policy 4.4, which is:

- An analysis of the effects of a proposed sphere of influence on other agencies and their service capabilities.

General Governance and Accountability

As a multi-service agency, Cameron Park CSD serves one of the largest and one of the most densely populated unincorporated communities in El Dorado County. The CSD's website lists information on its programs and facilities, community calendar and primary staff contacts. Because CAM also serves as the most visible local government, it utilizes its online presence to disseminate accountability information to the public. Among other materials related to governance, www.cameronpark.org contains CSD agendas, subcommittee assignments and meetings, audits and

approved budgets online. CAM appears to comply with open meeting regulations consistently by posting agendas and staff reports in advance.

The 2010 FESS found that only 5% of the district's Fire Department revenues are from a non-recurring source. Cameron Park CSD's finances are held in a public account outside of the County Treasury and are periodically reviewed or audited by private independent auditing firms. All audits reviewed by LAFCO staff indicate that the agency's finances are reported in compliance with accepted standards. The audits for Fiscal Years 2007-08 and 2008-09, the last year that is available online, contained recommendations for CAM to improve its internal accounting practices and policies.

The 2010 FESS found that the de facto staffing level at CAM's fire department is 2.0, which is consistent with countywide staffing levels. The District has reported the ability to staff some engines at 3.0 using volunteers.

The purpose of management is to effectively carry out the principal function and purpose of an agency. Good management will ensure that the agency's mission is accomplished and that the agency's efforts are sustainable into the future. Cameron Park CSD's biggest challenge in this area is the persistent turnover in the position of general manager. As stated earlier, CAM has changed general managers at least five times since 2003, with the last two prior-to-the-current-GM dismissals being highly contentious. The volatility at the top makes it difficult for the District to represent its positions vis-à-vis other governments and/or fosters distrust with the community. Internally, changes in top management limits the effective management of personnel and/or the consistent implementation of Board policies. Dismissals, especially contentious ones, become a distraction for the board at meetings, thereby impacting its ability to contend with other District business. In short, managerial instability negatively affect's a district's level of operations.

On May 18, 2011, one of the CAM directors resigned abruptly, stating it was the result of not agreeing with the overall board direction.

Intergovernmental Relationships

Emergency Medical Services

Fire protection districts in the county exercise a wide range of powers, but not emergency medical functions. EMS in the Cameron Park area is provided by a combination of funding from El Dorado County through CSA 7 and staffing from the fire agencies through the El Dorado County Emergency Services Authority (West Slope JPA). From a regular citizen point of view, it is difficult to understand the complex legal relationships, roles and responsibilities of the various participants in the Emergency Medical System (the County Board of Supervisors, CSA 7, West Slope JPA and the County EMS Management Agency). Tracking of revenue and revenue decisions is not easily accomplished, either at the County level or at the JPA level. The County's decision to transfer funds out of CSA 7 to support some rural fire districts blurs the lines even further.

The LSA and Neighboring Fire Districts

Government Code §56001 declares the policy of the State is to encourage orderly growth and development essential to the social, fiscal, and economic well-being of the State. The Code further states that “this policy should be effected by the logical formation and modification of the boundaries of local agencies, with a preference granted to accommodating additional growth within, or through the expansion of, the boundaries of those local agencies which can best accommodate and provide necessary governmental services.” This section also states the preference for multi-purpose districts over single purpose ones: “The Legislature finds and declares that a single multipurpose governmental agency is accountable for community service needs and financial resources and, therefore, may be the best mechanism for establishing community service priorities especially in urban areas.” Finally, Government Code §56425(e)4 states, “In determining the sphere of influence of each local agency, the commission shall consider and prepare a written statement of its determinations with respect to... [t]he existence of any social or economic communities of interest in the area if the commission determines that they are relevant to the agency.”

CAM’s two service areas were created as a result of both circumstance and by design. According to the “Issues and Alternatives in Updating the Spheres of Influence of Special Districts in the Cameron Park Area” prepared by a consultant on June 1998, the SOIs for the neighboring fire districts were established in 1973. These SOIs were created at the request of the FPDs and without independent analysis by LAFCO. In contrast, despite being in existence since 1961, the first Cameron Park CSD SOI was not established until 1998 and it included the LSA designation in some areas.

The creation of LSAs was a compromise initiative by LAFCO. By 1998, both the community of Cameron Park and its surrounding areas were experiencing an upsurge in development. Clearly there was a need to expand services, but Cameron Park CSD was essentially “landlocked” by neighboring districts, especially the fire agencies, with little room to expand. At the time LAFCO was studying its options for creating an SOI for CAM and identify its probable future boundaries, it received intense pressure from the surrounding districts to keep CAM’s boundaries the same. The El Dorado County Fire Chiefs’ Association adopted a resolution opposing the transfer or adjustment of CAM’s fire service area and William Wright wrote a letter on behalf of Rescue and El Dorado County FPDs stating that any adjustment to the fire service area would undermine the fire mutual aid system. The result was divorcing fire suppression from all other services: LAFCO allowed the expansion of all services offered by CAM except for fire suppression.

One of the arguments being used in 1998 to allow the CAM fire service area to expand, an effort that ultimately failed, was that CAM repeatedly was the first responder to certain areas beyond its boundaries. Since 1998, the disparity continues. As demonstrated in Appendix D, CAM provides more in mutual aid than it receives in return.

CAM and Its Ability to Participate in Consolidations

As discussed in depth in the *2011 Fire MSR*, almost all of the rural fire agencies are experiencing financial distress to some degree. Last fall all fire agencies explored the feasibility of two plans to shore up their revenue streams. The now dead *Plan A* involved the merger of the fire districts with El Dorado Hills CWD to achieve, among other things, protection from the shift of property taxes to the Education Revenue Augmentation Fund (ERAF). *Plan B* involved adjusting the benefit assessment collected by CSA 7 and tying it to inflation so that revenues can keep up with the costs of providing service. Now the fire districts are discussing *Plans C and D*, which are to look at utilizing Proposition 72 funds and the re-negotiation of the property tax percentages, respectively. The CAM Board has supported using the Proposition 72 funds to help rural fire districts.

While *Plan A* is certainly dead, for discussion purposes it is helpful to explore CAM's role in consolidations. CAM has participated in the workshops when districts were discussing *Plan A*; however, its role in participating in a *Plan A* type of scenario is questionable. As a multi-purpose CSD, its ability to merge with another non-CSD entity is problematic. One school of thought among governmental types is that once granted its authority to provide services, a CSD cannot be divested of it. Another school of thought is that LAFCO has been granted the ability to divest a CSD of its powers if it applies to LAFCO for that purpose. There is a significant overlap in both arguments, since the former may speak of the inability of a CSD being divested of its powers against its will. Regardless, if the former is true, for the Cameron Park fire service area to be merged with another district may involve the dissolution of the CSD in its current form and re-forming the CSD as a parks and recreation/CC&R/LLAD provider only. For fire services, the CAM service area would be annexed into the service area of the consolidated or consolidating district. It can choose to outsource its fire service to an adjoining FPD; however, that would keep its territorial service area intact and would not be considered a "consolidation."

6. The potential effect of agency services on agricultural and open space lands.

Information in this section addresses #5 of LAFCO Policy 4.4, which is:

- Potential effects on agricultural and open space lands.

The part of the Cameron Park community that CAM serves is essentially built out. Most of the remaining acreage that is undeveloped is protected open space or completely surrounded by urban uses. Those in the latter category are designated for eventual development by the County General Plan as part of the development of the Cameron Park Community Region. None of the services provided by CAM will have an effect on those parcels or introduce any growth inducing pressures.

VII SOI DETERMINATIONS

The MSR discusses the possible need to readjust CAM's boundaries to reflect the resources on the grounds and to reduce some of the current disparities in the mutual aid system. As discussed in the *2011 Fire MSR*, from a policy standpoint, it would be more logical for LAFCO to start designating the probable boundaries for all fire agencies. Indeed, as noted many times, the fire agencies already operate as one, and the two JPAs ensure that emergency services are provided in a consistent and timely manner.

But as also discussed in the *2011 Fire MSR*, policy decisions do not exist in a vacuum; they take place in a political environment where the slightest movement could derail years of policy work. The fire agencies are already attempting to work out a political solution to a chronic fiscal problem. Operationally the fire districts work as one, and LAFCO bringing up the adjustments of boundaries could result in acrimonious political arguments amongst the fire districts that could undermine the close working relationship. On the other hand, the continued financial disparity from an unbalanced or imperfect mutual aid system could also end up undermining the relationship. When it comes to the issue of CAM's fire boundaries, LAFCO is in a no-easy-answers environment.

Another issue is that none of the service areas or SOIs match the "Cameron Park Community Region" area designated in the General Plan. Given that this is the area the County of El Dorado, as the land use authority, has defined as the community of Cameron Park, it may be appropriate for LAFCO to extend, at the very least, the LSA SOI to encompass this area so that:

- 1) There is conformity between the planning documents used by LAFCO and the County; and
- 2) Some of CAM's boundaries conform with the Cameron Park community of interest.

In determining the sphere of influence for each local agency, Government Code §56425(e) requires the Commission to consider and prepare a written statement of determinations with respect to four factors. Staff recommends the following determinations for amending the sphere for all of the agencies covered in this study:

1. *The present and planned land uses in the area, including agricultural and open space lands.*

The District area is mostly built out with residential and commercial development. There are limited other land uses within the District's area and limited area internally for growth. The County is considering various development proposals to the north, southwest and east.

2. *The present and probable need for public facilities and services in the area.*

The District will require the acquisition and development of parklands in order to maintain the District's preferred level of service.

The increase in development around Cameron Park CSD on the north, southwest and east poses a policy quandary. As the new residents moving into those unserved and underserved areas utilize Cameron Park CSD's parks and recreation facilities, they begin to identify themselves with the Cameron Park community; however, they are not part of the District that has traditionally served that community. Annexation into the District for parks and recreation services has not traditionally posed as much of a challenge as annexing into the district for fire suppression and emergency services. While the District is usually the first responder for fire and emergency medical services in the immediately surrounding areas, breaching the incongruence between service capacity and service areas has proven to be politically sensitive.

- 3. The present capacity of public facilities and adequacy of public services that the agency provides or is authorized to provide.*

The District provides good public services, and will continue service provision at acceptable levels with the use of the community center and future acquisition of parklands. The continued instability at the District's highest levels, both in the Board of Directors and with constant turnover of its general manager, casts a pall on the CSD's ability to provide consistent management over its staff and/or advocate on its behalf in front of other agencies.

- 4. The existence of any social or economic communities of interest in the area if the Commission determines that they are relevant to the agency.*

The District is located within the unincorporated community of Cameron Park; however, the community of Cameron Park includes areas presently outside the Cameron Park CSD boundary and its spheres of influence. No additional communities of interest are located within the District boundaries. Nearby economic communities of interest include Cameron Estates, El Dorado Hills, Rescue and Shingle Springs.

Based upon the information contained in this document, it is recommended that, at the very least, the Cameron Park CSD LSA sphere of influence be extended to cover the areas identified as part of the Cameron Park Community Region in the County's General Plan as shown in Map 6.

VIII REFERENCES AND SOURCES

Cameron Park Community Services District Documents

- Cameron Park Community Services District. Recreation Facilities Master Plan. November 2, 2000
- SCI Consulting Group. Cameron Park Community Services District Landscaping and Lighting Assessment Districts Engineers Report. May 2007.
- SCI Consulting Group. Cameron Park Community Services District Park Impact Fee Nexus Study. November 2006.
- Michael T. Doody. Cameron Park Community Services District Basic Financial Statements and Required Supplementary Information, June 30, 2008
- Michael T. Doody. Cameron Park Community Services District Basic Financial Statements and Required Supplementary Information, June 30, 2007
- Michael T. Doody. Cameron Park Community Services District Basic Financial Statements and Required Supplementary Information, June 30, 2006

Cameron Park Community Services District's website (www.cameronpark.org):

- Covenants, Conditions and Restrictions page
- Administration and Finance page
- Cameron Park Community Services District. *General Obligation Bonds, Election of 2005, Series A Official Statement*. August 2005.

El Dorado County Documents:

- 2004 El Dorado County General Plan
- El Dorado County Grand Jury Final Reports: 2007-2008, 2008-2009, 2009-2010
- Census maps generated by the El Dorado County Surveyor's Office

El Dorado Local Agency Formation Commission Municipal Service Reviews:

- Letter to El Dorado LAFCO Regarding the Cameron Park Community Services District from William M. Wright dated August 26, 1998
- Resolution of the El Dorado County Fire Chiefs' Association Opposing the Reallocation of Property Tax Revenue, signed by Thomas P. Doyle, President, and dated July 2, 1998
- West County Parks and Recreation, adopted 2004
- Countywide Fire Suppression and Emergency Services Municipal Service Review, adopted 2006
- General Government Services I, adopted 2008

- General Government Services II, adopted 2007
- Fire and Emergency Services Study for the El Dorado LAFCO (Volumes 1-3), prepared by Citygate Associates, accepted May 2010
- Draft Fire Suppression and Emergency Services (prepared 2011)

Communications with Cameron Park CSD staff

- Livia Amidon, Account Clerk
- Mary Cahill, General Manager
- Lyle Eickert, CC&R Compliance Officer
- Denise Herrnberger, Senior Accountant
- Dave Teter, Battalion Chief, CALFIRE
- Joe Tyler, Battalion Chief, CALFIRE
- Mike Webb, Battalion Chief, CALFIRE

Other Sources

- California Department of Forestry & Fire Protection (CAL FIRE) website [REDACTED]
- California Emergency Management Agency, "Blue Ribbon Task Force Statewide Mutual Aid Survey – 2010"
- ISO website [REDACTED]:
 - Press Release – "Nation's Fire Departments Face Challenges in Staffing, Recruiting and Training Firefighters, and Accessing Water, Survey Finds," issued December 2008
 - El Dorado County Fire Department ratings 2002-2006
 - "Effective Fire Protection – A National Concern" (2004)
- Mountain Democrat website (www.mtdemocrat.com)
 - "Cameron Park opens the door to cuts in fire" by Eric Laughlin. Posted Sunday, February 20, 2011
 - "CPCSD manager fired Thursday" by Wendy Schultz. Posted March 25th, 2011
 - "Cameron Park gets new general manager" by Eric Laughlin. Posted Sunday, April 25th, 2010
 - "Cameron Park to maintain current fire staffing" by Eric Laughlin. Posted Tuesday, May 3rd, 2011
 - "Dupray shares optimistic agenda" by Noel Stack. Posted Thursday, May 5th, 2011

- “Director Green resigns” by Roberta Long. Posted Thursday, May 19th, 2011
- “County, CPCSD settle tax deal” by [REDACTED] Posted Monday, March 26, 2012
- “CPCSD suspends stipends” by [REDACTED] Published Wednesday, May 2, 2012
- Sacramento Area Council of Governments [REDACTED]:
- Sacramento Bee’s website and its “Foreclosures in the Sacramento region” online engine and map
- US Census Service – Population Projections [REDACTED]

IX APPENDICES

- Appendix A: Services and Programs
- Appendix B: Inventory of Park Lands
- Appendix C: Notice of Exemption
- Appendix D: Mutual Aid Calls

X MAPS

- Map 1: El Dorado County Fire Suppression
- Map 2: Cameron Park CSD SOI Map
- Map 3: Census CDPs
- Map 4: Cameron Park LRA Map
- Map 5: Cameron Park Community Region
- Map 6: Recommended Cameron Park CSD SOI

APPENDIX A

	Cameron Park CSD	El Dorado Hills CWD	Diamond Springs-El Dorado FPD	El Dorado County FPD	Garden Valley FPD	Georgetown FPD	Latrobe FPD	Mosquito FPD	Pioneer FPD	Rescue FPD	Fallen Leaf Lake CSD	Lake Valley FPD	Meeks Bay FPD	City of South Lake Tahoe	CAL FIRE
Fire Services															
Fire Prevention Officer			X												
Arson / Other Investigation	X	X	X	X	X	X	X	X	X	X	X	X	X	X	X
Plan Checking / Permits	X	X	X	X	X	X	X	X	X	X	X	X	X	X	X
Residential Inspection	X	X	X	X	X	X	X	X	X	X	X	X	X	X	
Commercial Inspection	X	X	X	X	X	X	X	X	X	X	X	X	X	X	
Burn Permits	X	X	X	X	X	X	X	X	X	X	X	X	X	X	X
Fire Safe Inspection	X	X	X	X	X	X	X	X	X	X	X	X	X	X	X
Hydrant Inspection	X	X	X	X	X	X	X	X	X	X	X	X	X	X	
Gas Inspection	X	X	X	X				X	X	X	X	X	X		
Gas Inspection (Commercial Properties Only)						X									
Construction Inspection		X													
Defensible Space / Chipper Inspection & Regulation	X	X	X	X	X	X	X	X	X	X	X	X	X	X	X
Controlled Burn Programs	X	X	X			X		X	X	X	X	X	X	X	X
Weed Abatement Program	X														
Smoke Detector Program				X											
Residential Plan Checking						X									
Fuel Reduction Inspections								X							
Tree Removal										X					
Power Line Inspections															X
Hazardous Materials															
Hazmat 1st Responder	X	X	X		X	X	X	X	X	X	X	X	X	X	X
Hazardous Household Waste Collection Site		X													
I.C. / Specialist							X								
Rescue Services															
Search & Rescue	X	X	X	X	X	X	X	X	X	X	X	X	X	X	X
Swift Water Rescue	X	X	X	X	X	X	X	X	X	X	X	X	X	X	X
Vehicle Rescue	X	X	X	X	X	X	X	X	X	X	X	X	X	X	X
Ice Rescue														X	
High Angle Rope Rescue														X	
Other Safety Services/Programs															
Car seat Inspection	X	X	X	X		X	X		X	X		X	X	X	
Life Safety Inspections	X	X	X	X		X	X	X	X	X		X	X	X	
Public Education Programs	X	X	X	X		X	X	X	X	X		X	X	X	X
Children/School Programs	X	X	X	X	X	X	X	X	X	X		X	X	X	X
Station Tours	X	X	X	X	X	X	X	X	X	X		X	X	X	
Disaster/Evacuation Plans	X	X	X	X	X	X	X	X	X	X		X	X	X	X
Animal Rescue	X	X	X	X	X	X	X	X	X	X		X	X	X	
Animal Control					X										
CPR/First Aid classes		X													
Life Jacket Loaner Program		X													
Fire Plan				X											
Fire Extinguisher Sales											X				
Public/Disabled Assistance											X				
"Fire Brigade" training at Stanford Camp											X				
Community Activities											X				
"Every 15 Minutes" High School Safety Program						X									
Disabled Assistance												X			
Hazard Abatement on Lots												X			
Newsletter													X		
Safe Kids Program													X		
Hazardous Conditions										X					
Medical Services															
Basic Life Support	X	X	X	X		X	X	X	X		X		X	X	X
EMT 1	X	X	X	X	X	X	X	X	X		X	X	X	X	X
EMT 1 (Defibrillator)	X	X	X	X	X	X	X	X	X	X		X	X	X	X
Advanced Life Support	X	X	X	X	X	X	X	X	X	X		X	X	X	X
EMT-Paramedic	X	X	X	X	X	X	X	X	X	X		X	X	X	X
Education Programs	X	X	X	X				X	X	X			X	X	
"Every 15 Minutes" High School Safety Program				X											
"Fire Brigade" training at Stanford Camp											X				

APPENDIX B – CAMERON PARK CSD LAND INVENTORY

The District maintains parks and recreation facilities. Its parkland-per-population standards are provided in the Cameron Park Community Services District Recreation Facilities Master Plan (2000) and are shown in the table below.

CAMERON PARK CSD PARKS STANDARDS				
Classification	Acres per 1,000	Size range	Population served	Area served
Neighborhood	2	2 to 10 acres	500-1,000	Up to ½ mile
Community	3	10 to 100 acres	5,000-25,000	1 to 3 miles
Open Space Preserves	5	10 to 1,000 acres	Entire population	All of Cameron Park CSD
Total	10			

Source: Cameron Park Community Services District Recreation Facilities Master Plan. 2000.

The District's overall park standard is 5.0 acres of developed parkland per 1,000 population. In addition to this standard, the District has proposed an additional open space requirement of 5.0 acres per 1,000 population. Open space includes creek corridors, trails, slope easements, wetlands and other undeveloped natural lands. The District has also set population-based standards for other types of recreational facilities, including baseball diamonds, softball diamonds, tennis courts, soccer fields, swimming pools and community centers. A list of the CSD's parks and available recreational activities is shown below.

PARK LAND INVENTORY		
Developed Active Parklands: Park/Facility Name	Acreage	Existing Facilities
Cameron Park Lake	Land - 6.4 Lake - 45.0 Total - 52.6	2 million gallon filtered pool, volleyball court, walking-jogging trails, gazebo, boat rentals, picnic area, tennis courts, play equipment, parking, gatehouse, restroom
Rasmussen Park	10	Baseball, play area, barbecues, horseshoes, turf area, trails
Eastwood Park	2.6	Landscaped open space, informal picnic area
Christa McAuliffe Park	6	Soccer, playground, picnic area, paved parking, skate park, restrooms
David West	2.1	Baseball, soccer, picnic areas
Northview	6	Playground, trail, open space
Gateway Park	7.8	Informal turf play area
Royal Oaks Park	10.4	Trails, open space
Hacienda Park	4.9	Trails, picnic benches, dog park, trail
Community Center	4.1	Recreational and competition swimming pool, assembly hall with stage, dance studio, teen room and kitchen and a gymnasium with large meeting rooms, locker rooms and pool access
Total Developed Active	Land – 60.3 Water – 45.0	

PARK LAND INVENTORY		
Undeveloped Parklands:	Acreage	Planned Facilities
Park/Facility Name		
Knollwood Park	6.5	Open space, but retain a corridor for pedestrian and bicycle access to the west
Sandpiper Park	3	Open space
Bonanza Park	10.6	Open space
Total Undeveloped:	20.1	
Total Park Acreage:	125.4	

Source: Cameron Park CSD

EL DORADO LAFCO
LOCAL AGENCY FORMATION COMMISSION

NOTICE OF EXEMPTION

TO: OFFICE OF PLANNING AND RESEARCH
P.O. Box 3044
Sacramento, CA 95812-3044

COUNTY CLERK
County of El Dorado
330 Fair Lane
Placerville, CA 95667

FROM:
EL DORADO COUNTY LAFCO
550 Main Street, Suite E
Placerville, CA 95667
José Henriquez
(530) 295-2707

FILED

JUN 07 2012

WILLIAM E. SCHULTZ Recorder-Clerk
BY *Jim Roche*

Project Title: Cameron Park Community Services District SOI Update; LAFCO Project No. 2011-03

Project Location – Specific: Located in the community of Cameron Park, between El Dorado Hills and Shingle Springs, north of US Highway 50.

Project Location – City: unincorporated Cameron Park area Project Location – County: El Dorado

Description of Nature, Purpose and Beneficiaries of Project: Expand the limited service area sphere of influence (LSA SOI) of the Cameron Park Community Services District to encompass the remaining areas of the Cameron Park Community Region that are in neither the District's service area nor SOI.

Name of Public Agency Approving Project: El Dorado LAFCO

Name of Person or Agency Carrying Out Project: El Dorado LAFCO

Exempt Status: **(check one)**

- Ministerial (Sec. 21080(b)(1); 15268);
- Declared Emergency (Sec. 21080(b)(3); 15269(a));
- Emergency Project (Sec. 21080(b)(4); 15269(b)(c));
- Categorical Exemption. State type and section number: _____
- Statutory Exemptions. State code number: 15061(b)(3)

Reasons why project is exempt: The activity is covered by the general rule that CEQA applies only to projects which have the potential for causing a significant effect on the environment. Where it can be seen with certainty that there is no possibility that the activity in question may have a significant effect on the environment, the activity is not subject to CEQA. This sphere of influence update has no possibility for causing a significant effect on the environment.

Lead Agency
Contact Person: José C. Henríquez Area Code/Telephone/Extension: (530) 295-2707

If filed by applicant:

1. Attach certified document of exemption finding.
2. Has a Notice of Exemption been filed by the public agency approving the project? Yes No

Signature *José C. Henríquez* Date: May 25, 2012 Title: Executive Officer

- Signed by Lead Agency
 - Signed by Applicant
- Date Received for filing at OPR _____

Appendix D

Mutual Aid Given								
Districts	2003	2004	2005	2006	2007	2008	2009	2010
Cameron Park CSD	638	662	462		450	564	463	410
City of South Lake Tahoe	535	542	443					
Diamond Springs/EI Dorado FPD	553	556	564		589	593	484	436
El Dorado County FPD	838	796	820		685	550	525	567
El Dorado Hills County WD	299	300	220		251	234	148	152
Fallen Leaf Lake CSD	7	4	1					
Garden Valley FPD	247	254	212		161	149	125	144
Georgetown FPD	145	189	118		200	188	184	134
Lake Valley FPD	103	115	91					
Latrobe FPD	36	48	79		86	70	55	39
Meeks Bay FPD	64	67	51	51	69	59	45	25
Mosquito FPD	15	8	7		13	21	6	14
Pioneer FPD	75	64	51		78	88	50	38
Rescue FPD	276	275	239		248	254	225	203

Mutual Aid Received								
Districts	2003	2004	2005	2006	2007	2008	2009	2010
Cameron Park CSD	270	261	203		275	265	250	212
City of South Lake Tahoe	66	81	113					
Diamond Springs/EI Dorado FPD	531	502	517		437	304	294	422
El Dorado County FPD	1058	1072	982		1068	1072	930	864
El Dorado Hills County WD	136	136	120		152	145	125	131
Fallen Leaf Lake CSD	5	3	2					
Garden Valley FPD	134	148	106		162	190	195	131
Georgetown FPD	93	109	78		77	96	90	88
Lake Valley FPD	22	26	16					
Latrobe FPD	43	54	20		22	26	22	34
Meeks Bay FPD	4	6	7	** District stopped tracking these data **				
Mosquito FPD	13	17	19		24	32	24	17
Pioneer FPD	116	108	106		109	119	94	71
Rescue FPD	164	180	196		222	231	241	167

Appendix D

Mutual Aid "Balance"+				
Districts	2007	2008	2009	2010
Cameron Park CSD	175	299	213	198
City of South Lake Tahoe	0	0	0	0
Diamond Springs/El Dorado FPD	152	289	190	14
El Dorado County FPD	-383	-522	-405	-297
El Dorado Hills County WD	99	89	23	21
Fallen Leaf Lake CSD	0	0	0	0
Garden Valley FPD	-1	-41	-70	13
Georgetown FPD	123	92	94	46
Lake Valley FPD	0	0	0	0
Latrobe FPD	64	44	33	5
Meeks Bay FPD	** N/A **			
Mosquito FPD	-11	-11	-18	-3
Pioneer FPD	-31	-31	-44	-33
Rescue FPD	26	23	-16	36

+ A positive number indicates a district gave more mutual aid to other districts than it received from other districts. A negative number means a district received more mutual aid than it gave to other agencies

Mutual/Auto by Incident Type								
2007 AGENCY	Structure Fire	Non-Structure Fire	Vehicle Fire	Vehicle Accident	Medical Aid	Hazmat	Good Intent False Alarm	Other
Cameron Park CSD	50	48	15	112	146	3	36	11
Diamond Springs/El Dorado FPD	80	50	16	213	133	8	50	4
El Dorado County FPD	65	62	25	216	114	5	32	
El Dorado Hills CWD	40	29	5	57	55	0	25	22
Garden Valley FPD	11	17	4	67	33	1	11	6
Georgetown FPD	12	28	4	62	57	1	12	5
Latrobe FPD	8	13	1	22	20	7	14	0
Mosquito FPD	1	2	1	2	3	0	0	3
Pioneer FPD	11	6	1	13	33	0		
Rescue FPD	37	32	1	36	97	4	21	14
Total	315	287	73	800	691	29	201	65

Blanks denote district was net recipient of mutual aid for this incident type

Appendix D

Mutual/Auto by Incident Type								
2008 AGENCY	Structure Fire	Non-Structur Fire	Vehicle Fire	Vehicle Accident	Medical Aid	Hazmat	Good Intent False Alarm	Other
Cameron Park CSD	68	105	21	112	156	6	47	10
Diamond Springs/El Dorado FPD	97	63	12	175	153	10	49	10
El Dorado County FPD	69	86	13	146	70	5		
El Dorado Hills CWD	50	40	6	46	44	8	19	8
Garden Valley FPD	11	29	3	51	33	2	7	
Georgetown FPD	18	31	4	56	56	0	3	
Latrobe FPD	3	14	1	25	15	2	4	4
Mosquito FPD	0	6	0	5	7	0	1	
Pioneer FPD	6	14	1	15	39	1		
Rescue FPD	32	36	1	40	114	3	21	2
Total	354	424	62	671	687	37	151	34

Blanks denote district was net recipient of mutual aid for this incident type

Mutual/Auto by Incident Type								
2009 AGENCY	Structure Fire	Non-Structur Fire	Vehicle Fire	Vehicle Accident	Medical Aid	Hazmat	Good Intent False Alarm	Other
Cameron Park CSD	50	58	10	113	47	3	56	
Diamond Springs/El Dorado FPD	75	29	7	140	140	2	56	1
El Dorado County FPD	45	60	12	149		3		
El Dorado Hills CWD	46	18	2	51	37	7	27	10
Garden Valley FPD	11	22	1	55	26	0	6	
Georgetown FPD	8	31	0	47	60		11	
Latrobe FPD	1	8	1	30	15	0	6	1
Mosquito FPD	0	3	1	0	0	0	0	
Pioneer FPD	10	12	1	21	26	3	2	
Rescue FPD	21	22	5	31	113	2	21	1
Total	267	263	40	637	464	20	185	13

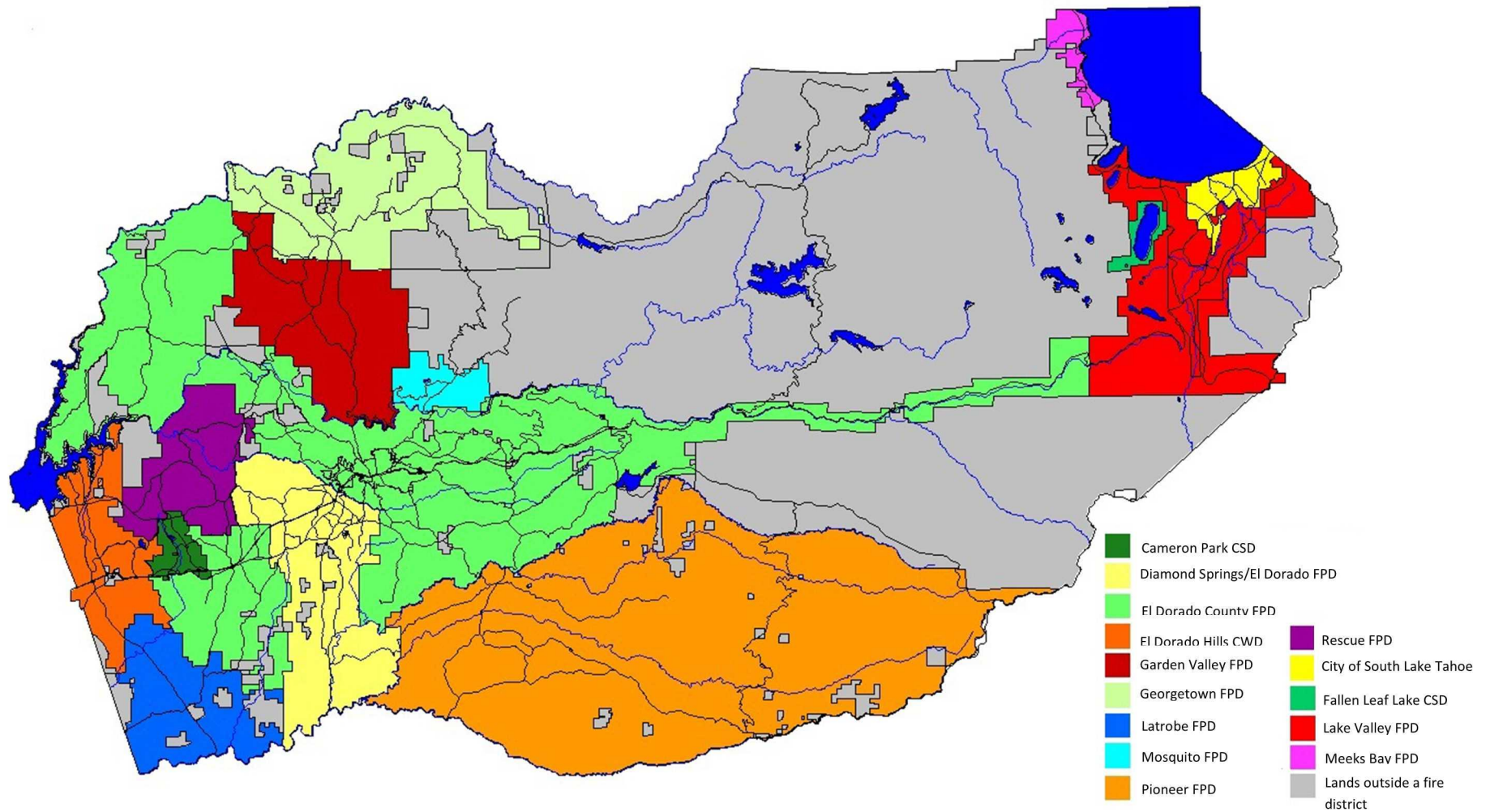
Blanks denote district was net recipient of mutual aid for this incident type

Appendix D

Mutual/Auto by Incident Type								
2010 AGENCY	Structure Fire	Non-Structur Fire	Vehicle Fire	Vehicle Accident	Medical Aid	Hazmat	Good Intent False Alarm	Other
Cameron Park CSD	40	54	15	91	68	4	60	1
Diamond Springs/El Dorado FPD	41	25	7	129	160	5	54	
El Dorado County FPD	39	23	15	195		1	7	
El Dorado Hills CWD	37	23	3	48	38	5	18	10
Garden Valley FPD	13	12	1	73	31	2	1	
Georgetown FPD	10	17	0	36	45	0	11	
Latrobe FPD	2	4	2	25	7	1	1	2
Mosquito FPD	0	1	0	8	2	0	2	
Pioneer FPD	6	2	2	9	39	1	0	
Rescue FPD	25	11	2	33	102	2	18	5
<i>Total</i>	<i>213</i>	<i>172</i>	<i>47</i>	<i>647</i>	<i>492</i>	<i>21</i>	<i>172</i>	<i>18</i>

Blanks denote district was net recipient of mutual aid for this incident type

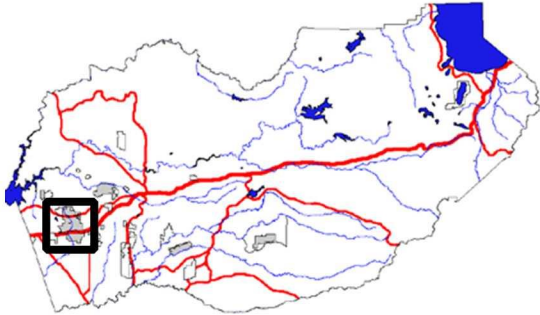
MAP 1




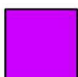

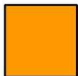
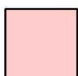
El Dorado County Fire Suppression Agencies

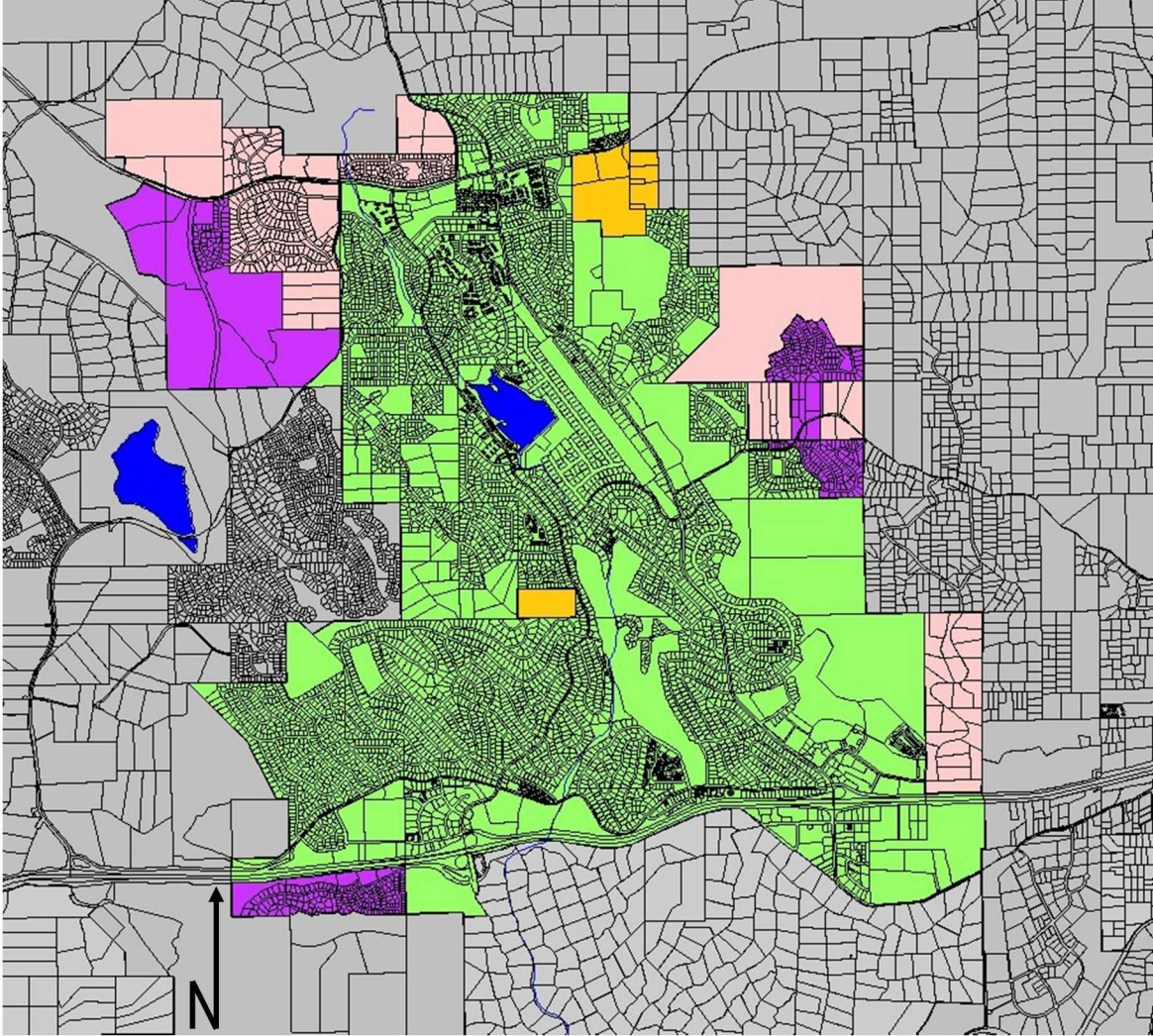
MAP 2

Area of Interest:



Legend:

-  Service Area – all services
-  Service Area – all services except fire protection
-  2008 Sphere of Influence line
-  SOI for all services
-  Limited SOI – all services except fire protection



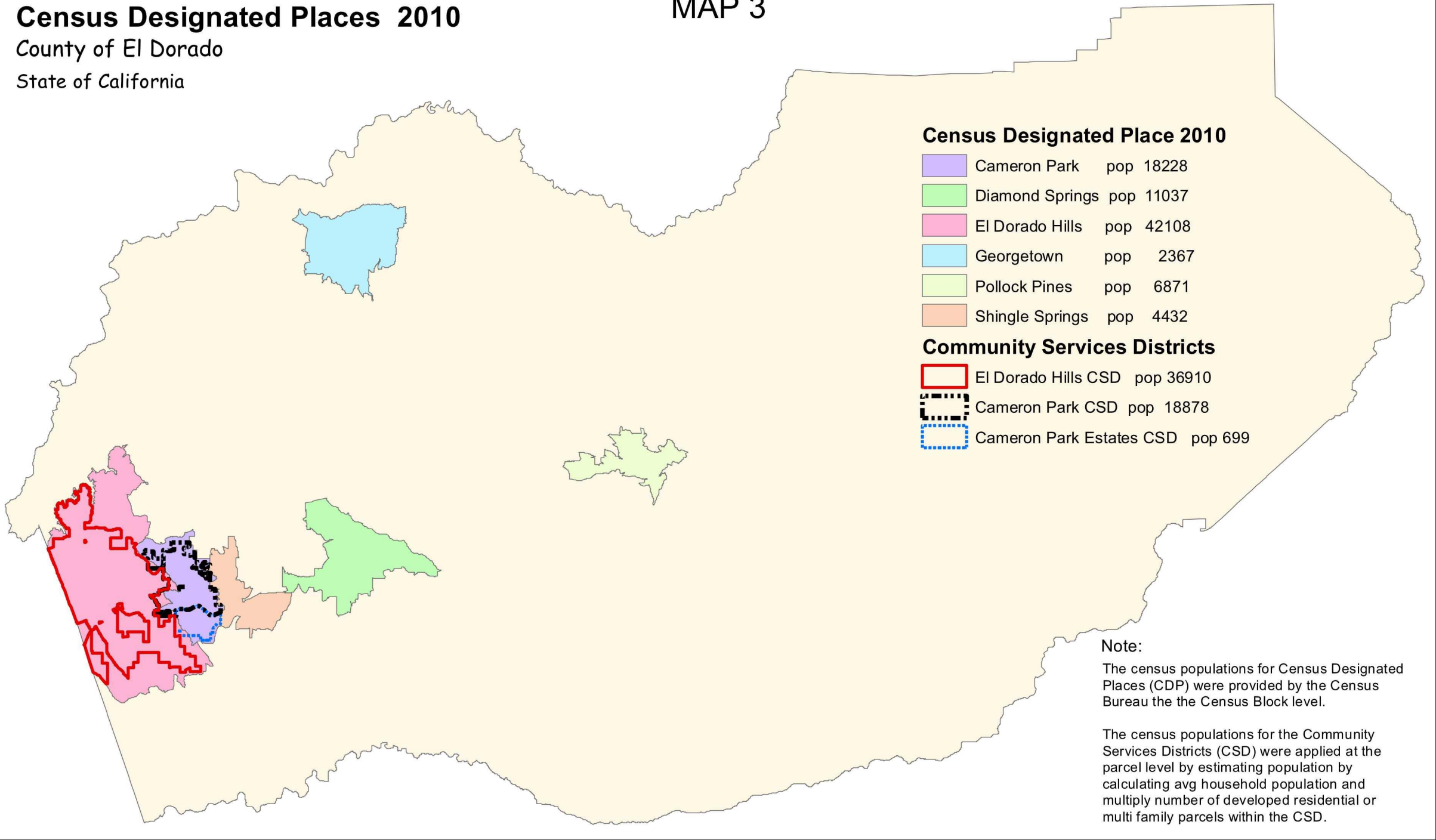
Cameron Park Community Services District

Census Designated Places 2010

County of El Dorado

State of California

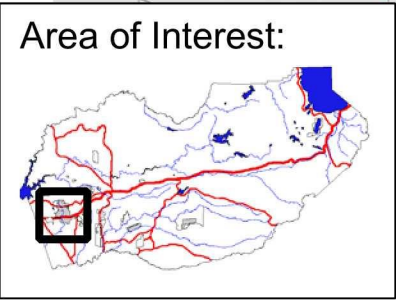
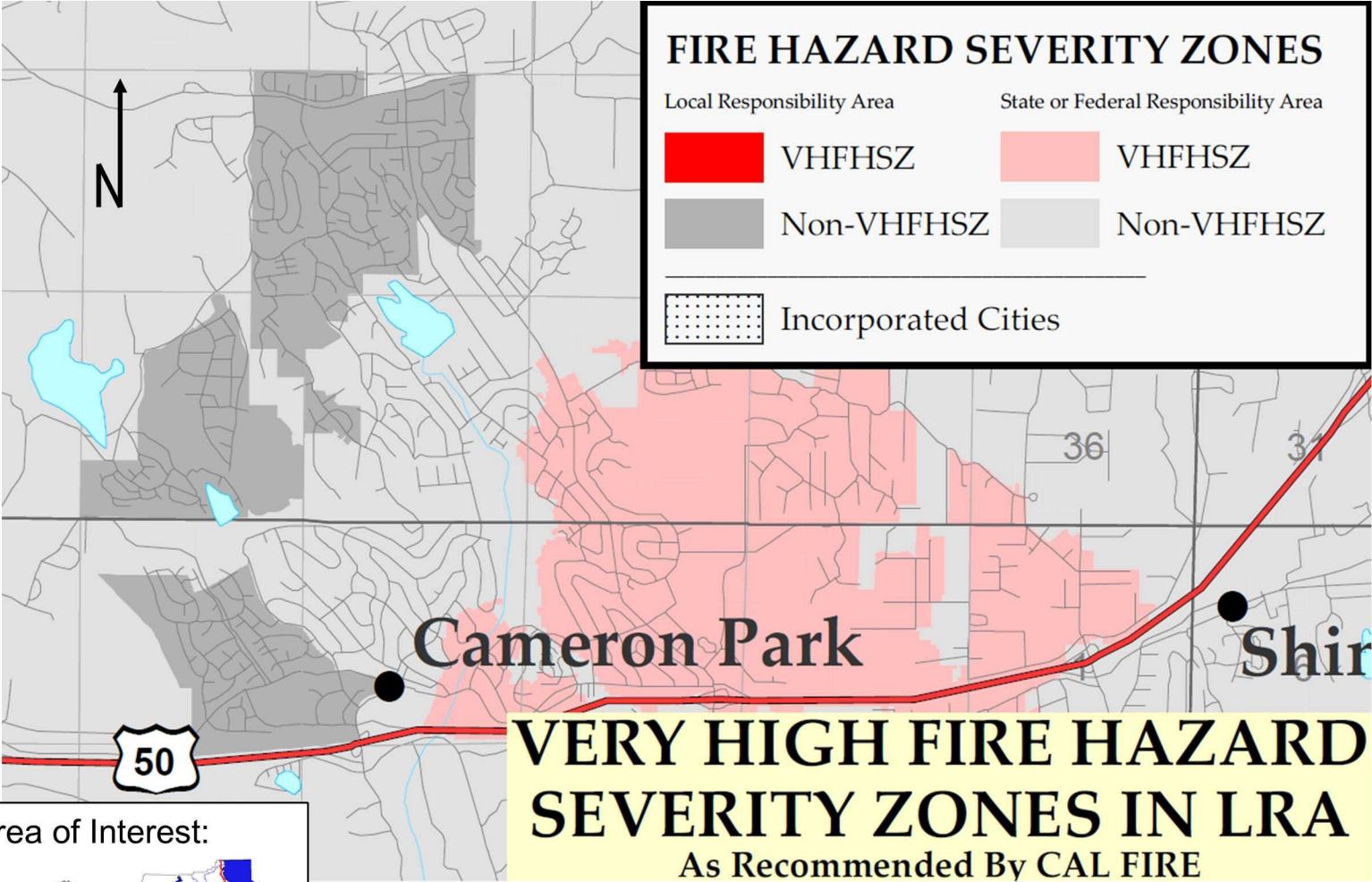
MAP 3



DISCLAIMER
THIS DEPICTION WAS COMPILED FROM UNVERIFIED PUBLIC AND PRIVATE SOURCES
AND IS ILLUSTRATIVE ONLY. NO REPRESENTATION IS MADE AS TO ACCURACY OF
THAT INFORMATION AND NONE MAY BE INFERRED. THEREFORE USERS MAKE USE TO
THAT INFORMATION AT THEIR OWN RISK.

NOTES:
PREPARED AT THE REQUEST OF LAFCO Date: 05/03/2011
MAP PREPARED BY: LINDA WRIGHT, Date:05/04/2011
G.I.S. PROJECT ID: gi005789
EL DORADO COUNTY SURVEYOR/G.I.S. DIVISION.
PHONE (530)621-5871 FAX (530)626-8731

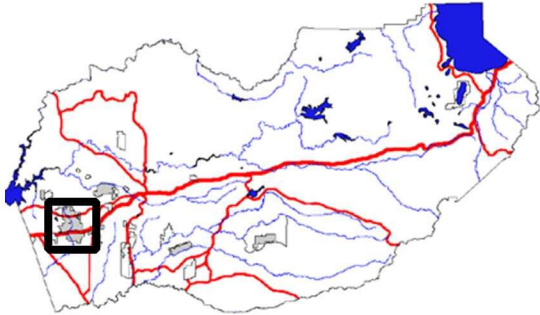
MAP 4



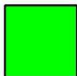


Cameron Park Local Responsibility Area

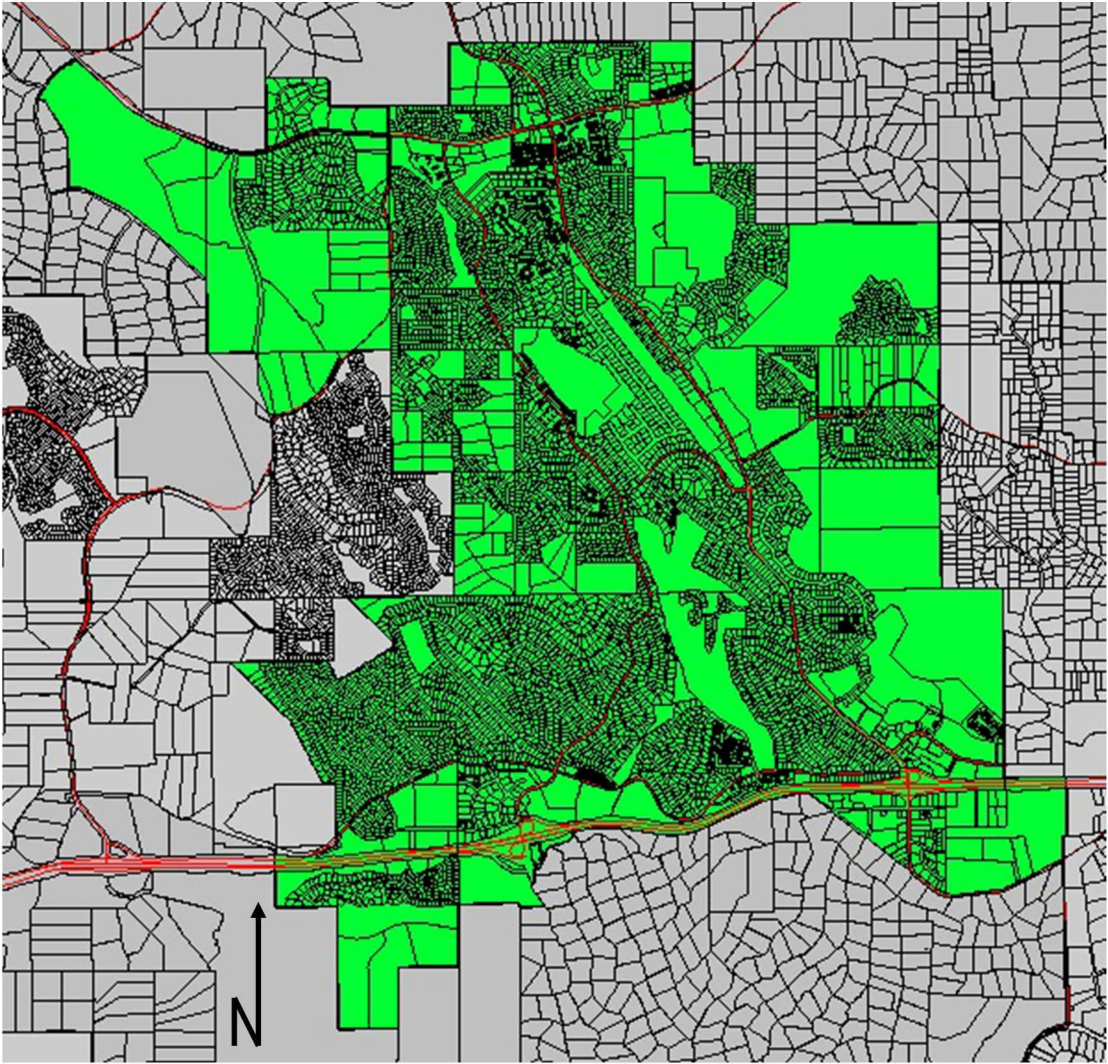
MAP 5

Area of Interest:



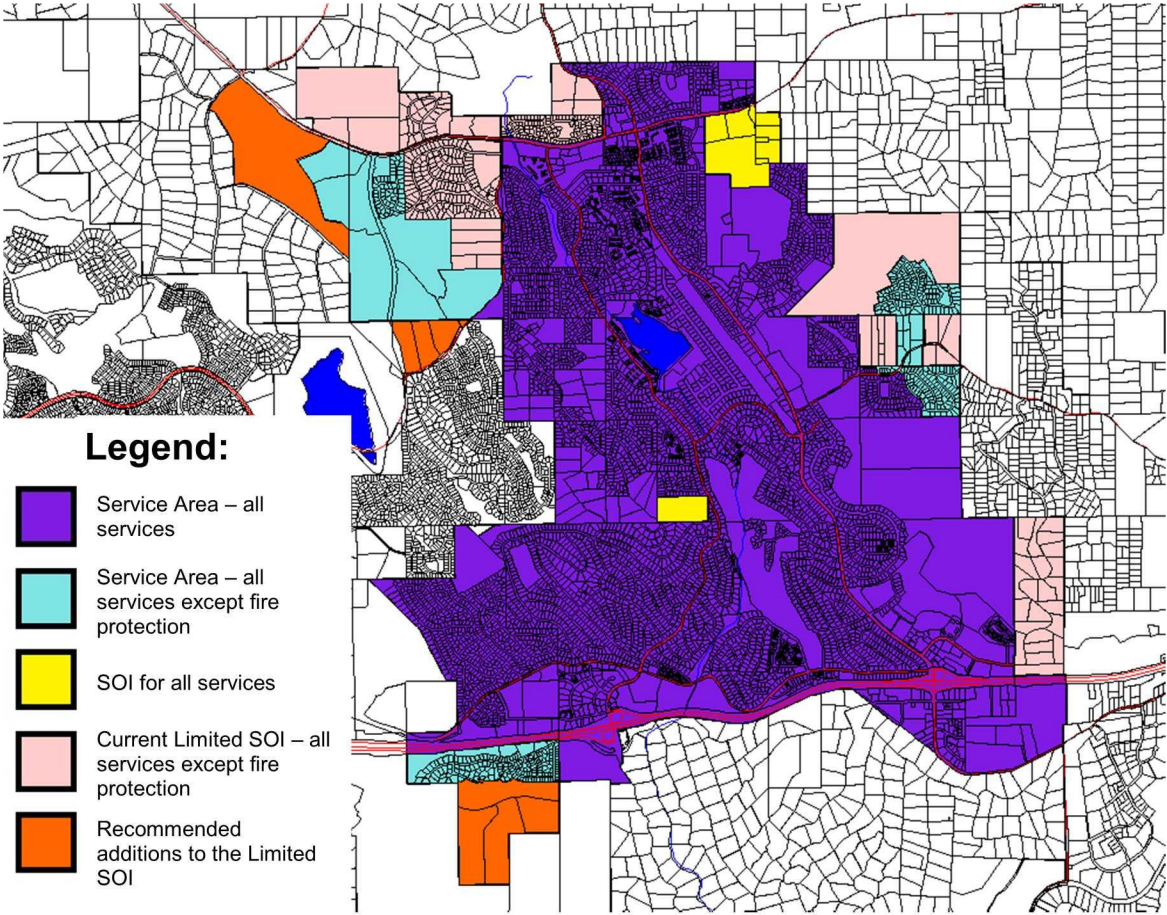
Legend:

-  Cameron Park Community Region
-  El Dorado County unincorporated area
-  Major roads and highways



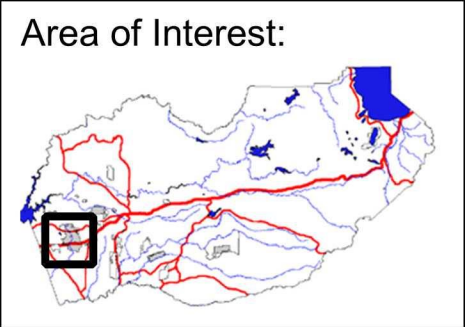
Cameron Park Community Region

MAP 6



Legend:

-  Service Area – all services
-  Service Area – all services except fire protection
-  SOI for all services
-  Current Limited SOI – all services except fire protection
-  Recommended additions to the Limited SOI



Recommended Cameron Park Community Services District Sphere of Influence Update