

RESOLUTION NUMBER L-2007-14

Update to the El Dorado County Fire Protection District

Sphere of Influence

LAFCO Project No. 2007-04-C

AMENDED

WHEREAS, the Cortese-Knox-Hertzberg Local Government Reorganization Act of 2000 governs the organization and reorganization of cities and special districts by local agency formation commissions established in each county, as defined and specified in Government Code Sections 56000 et seq. (unless otherwise indicated all statutory references are to the Government Code); and

WHEREAS, Section 56425 et seq. provides that the local agency formation commission in each county shall develop and determine the sphere of influence of each local governmental agency within the county, and enact policies designed to promote the logical and orderly development of areas within the spheres of influence, as more fully specified in Sections 56425 et seq.; and

WHEREAS, Section 56430 requires that local agency formation commissions conduct a municipal service review (MSR) prior to, or in conjunction with, consideration of actions to establish or update a sphere of influence (SOI) in accordance with Sections 56076 and 56425; and

WHEREAS, pursuant to Section 56430, in order to prepare and update spheres of influence, the Commission conducted a Countywide Fire Suppression and Emergency Services Municipal Services Review and adopted a written statement of determinations on August 23, 2006; and

WHEREAS, the agencies reviewed were County Service Area 7, City of South Lake Tahoe, Cameron Park Community Services District, Diamond Springs/El Dorado Fire Protection District, El Dorado County Fire Protection District, El Dorado Hills County Water District, Fallen Leaf Lake Community Services District, Garden Valley Fire Protection District, Georgetown Fire Protection District, Lake Valley Fire Protection District, Latrobe Fire Protection District, Meeks Bay Fire Protection District, Mosquito Fire Protection District, Pioneer Fire Protection District, and Rescue Fire Protection District, among others; and

WHEREAS, the Executive Officer reviewed the sphere of influence update pursuant to the California Environmental Quality Act (CEQA), and recommended that the project is exempt from CEQA under Section 15061(b)(3) because it is covered by the general rule that CEQA applies only to projects which have the potential for causing a significant effect on the environment. Where it can be seen with certainty that there is

no possibility that the activity in question may have a significant effect on the environment, the activity is not subject to CEQA, and, based thereon, the Executive Officer prepared a Notice of Exemption; and

WHEREAS, the Executive Officer set a public hearing for June 27, 2007 for consideration of the environmental review and the draft sphere of influence update for El Dorado County Fire Protection District and caused notice thereof to be posted, published and mailed at the times and in the manner required by law at least twenty-one (21) days in advance of the date; and

WHEREAS, on June 27, 2007 the draft sphere of influence update came on regularly for hearing before LAFCO, at the time and place specified in the Notice; and

WHEREAS, at said hearing, LAFCO reviewed and considered the draft sphere of influence, and the Executive Officer's Report and Recommendations; each of the policies, priorities and factors set forth in Government Code Section 56425 et seq.; LAFCO's Policies and Guidelines related to spheres of influence, starting with Policy 4.0; and all other matters presented as prescribed by law; and

WHEREAS, at that time, an opportunity was given to all interested persons, organizations, and agencies to present oral or written testimony and other information concerning the proposal and all related matters; and

WHEREAS, the Commission received, heard, discussed, and considered all oral and written testimony related to the sphere update, including but not limited to protests and objections, the Executive Officer's report and recommendation, the environmental document and determinations and the service reviews; and

WHEREAS, pursuant to Government Code Section 56425(i)(2), the Commission does hereby establish the functions and classes of services provided by El Dorado County Fire Protection District as follows: fire suppression and emergency services; and

WHEREAS, the Commission does hereby make the following determinations regarding the proposal pursuant to Government Code Section 56425(e):

1. *The present and planned land uses in the area, including agricultural and open space lands.*

Present land use in the ECF area varies depending on the location. On and around the City of Placerville the land use character is mostly urban (high density, commercial and industrial); however, in other areas (such as Cool or Pollock Pines), it is low to medium density residential and areas between city and community regions it is primarily agricultural and rural residential. In general, population centers tend to be mostly concentrated along arterials, such as Highways 50 and 193 or South Shingle Road. Future land uses are expected to remain relatively unchanged, with population growth consistent with the 2004 General Plan along already-established community regions.

Due to its large size, ECF has several pockets of areas not within a fire agency. Most of them are entirely surrounded by ECF. There are some areas, however, that lie between ECF and other fire agencies. Most notably are areas between ECF and Rescue FPD (RES) and between ECF and Garden Valley FPD (GRV). There are no plans to develop the parcels in either of these areas beyond the current General Plan designation. However, the RES, GRV and ECF chiefs recognize that these parcels are not within their respective fire protection agency. Since further discussions and analyses are necessary, they have requested that their spheres remain as they are currently drawn. All three chiefs have agreed to a collaborative effort to evaluate and reorganize the spheres and service areas, if necessary.

2. *The present and probable need for public facilities and services in the area.*

The 2004 General Plan has designated the areas within the ECF sphere as either agricultural, natural resources or rural residential. It is possible that in the future lands previously used exclusively for agricultural purposes may be converted to other uses or developed to a limited extent. If this were to occur, it would lead to an increase in service demand to the district. However, fire suppression and emergency medical services, in it of themselves, do not increase the likelihood of this type of activity and therefore induce urban growth or the premature conversion of agricultural, open space to other uses.

Parcels currently within the ECF district receive sufficient fire suppression and emergency response services as needed. If annexed, the areas described above would increase demand for these services, although it is expected that existing personnel and equipment would be adequate to meet the level of service required for the inclusion. In addition, funding, in the form of increased property taxes, assessments and applicable development impact fees received would offset increased costs and ensure the sufficient provision of services to serve the area.

3. *The present capacity of public facilities and adequacy of public services that the agency provides or is authorized to provide.*

ECF appears to provide moderate fire suppression and emergency response services within and, in cases of mutual aid responses, outside its boundaries. The district's fire agency network is extensive; however, not all stations are staffed year-round. The district is compensated for these services primarily through property taxes, development impact fees and district assessments.

4. *The existence of any social or economic communities of interest in the area if the Commission determines that they are relevant to the agency.*

ECF serves the City of Placerville and the communities of Camino, Coloma, Cool, Gold Hill, Kyburz, Lotus, Oak Hill, Pacific House, Pilot Hill, Pleasant Valley, Pollock Pines, Shingle Springs, Sierra Springs and Strawberry, as well as the surrounding rural areas. Other than Greenwood, there are no social or economic communities of interest in the area that will be broken due to this sphere update, nor are there any areas that will require special consideration from the Commission in this matter.

NOW, THEREFORE BE IT HEREBY RESOLVED, DETERMINED, ORDERED AND FOUND:

Section 1. Each of the foregoing recitals is true and correct.

Section 2. The Notice of Exemption prepared by the Executive Officer is approved as the appropriate environmental document for this project.

Section 3. The update to the El Dorado County Fire Protection District's Sphere of Influence to affirm the current sphere is orderly, logical and justifiable.

Section 4. The Executive Officer is directed to file a Notice of Exemption under Section 15061(b)(3) in compliance with the California Environmental Quality Act and local ordinances implementing the same.

Section 5. The El Dorado County Fire Protection District's sphere of influence is updated to affirm its current sphere as shown on the attached map, marked Exhibit A, attached hereto and incorporated herein by this reference.

PASSED AND ADOPTED by the El Dorado Local Agency Formation Commission at a regular meeting of said Commission, held June 27, 2007 by the following vote of said Commission.

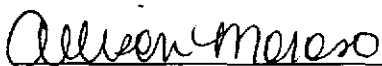
AYES: LONG, LOFTIS, BRIGGS, HAGEN,
HUMPHREYS, NORRIS, SWEENEY

NOES: NONE

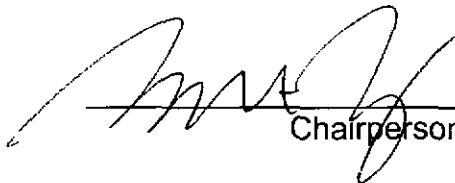
ABSTENTIONS: NONE

ABSENT: NONE

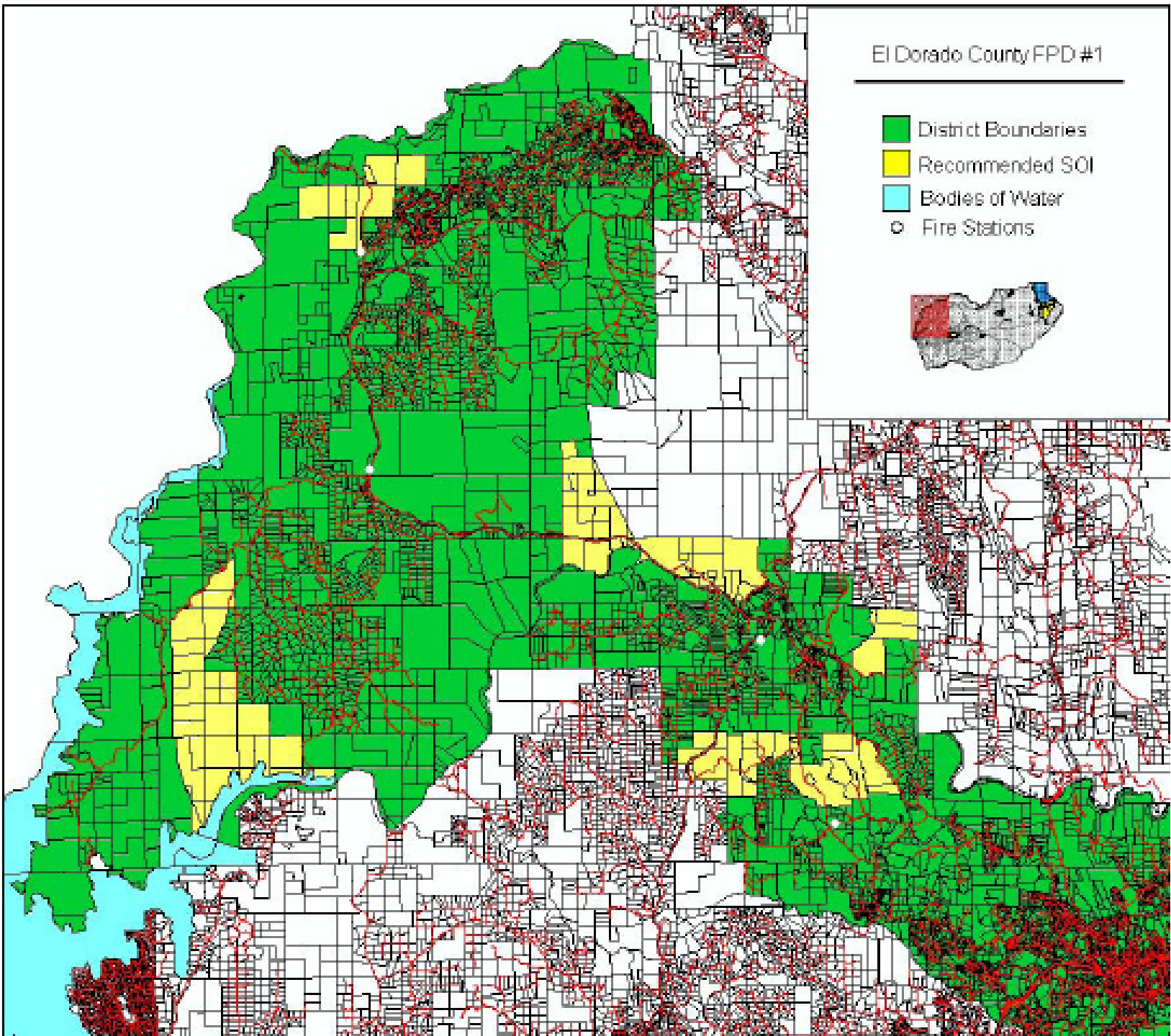
ATTEST:



Clerk to the Commission

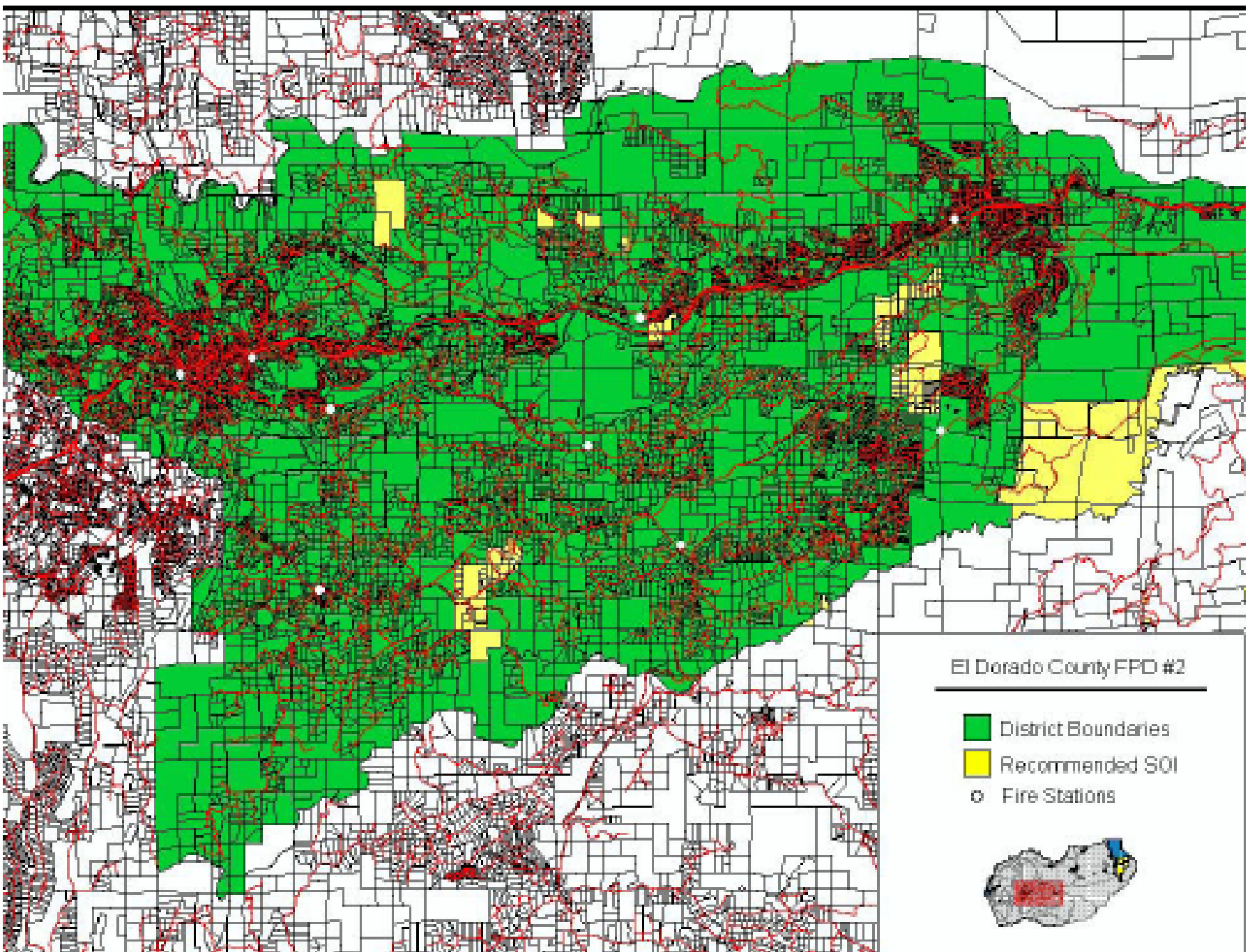


Chairperson



APPROVED

EXHIBIT A



APPROVED

EXHIBIT A

