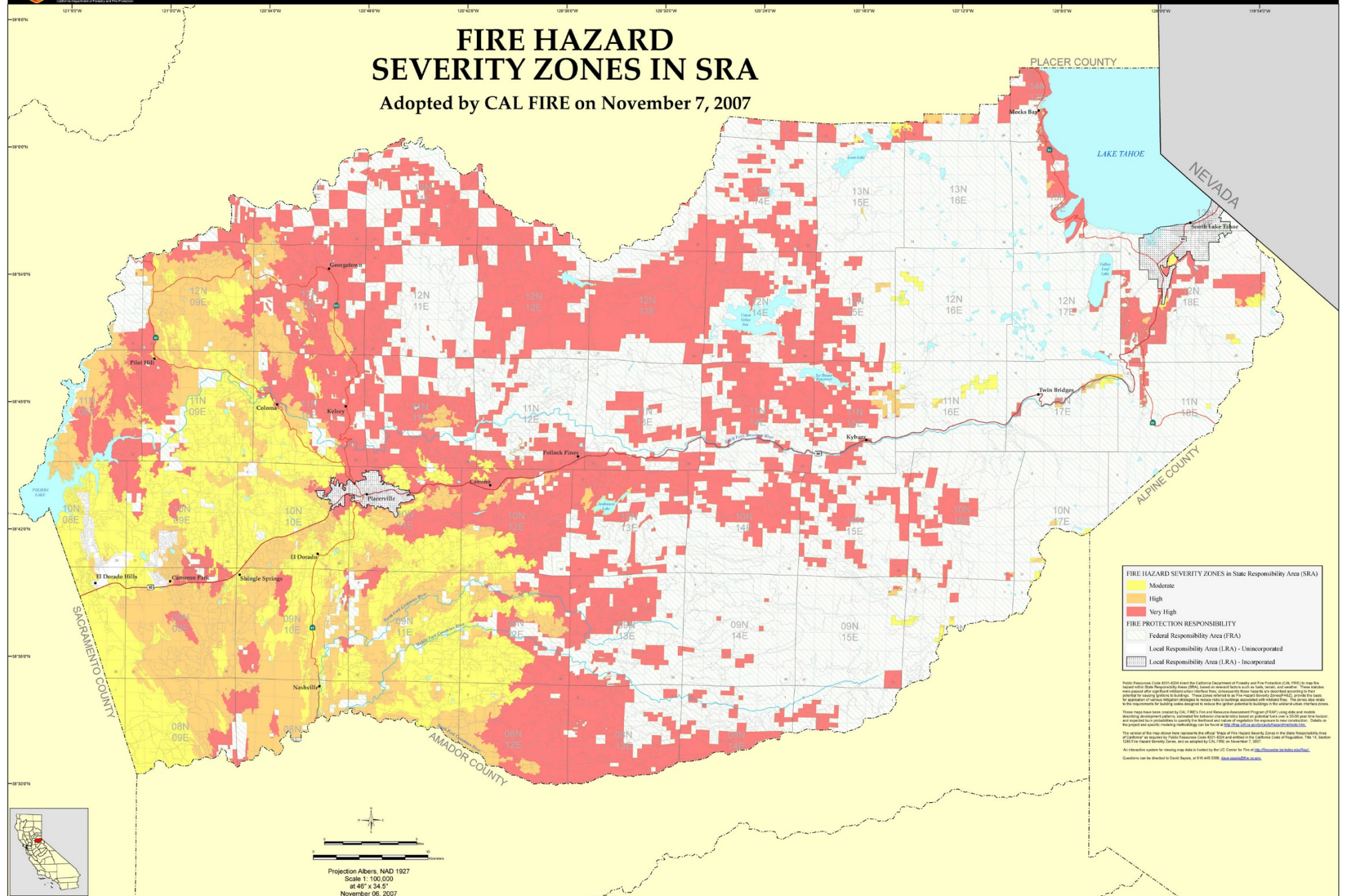




EL DORADO COUNTY

FIRE HAZARD SEVERITY ZONES IN SRA

Adopted by CAL FIRE on November 7, 2007



FIRE HAZARD SEVERITY ZONES in State Responsibility Area (SRA)

- Moderate
- High
- Very High

FIRE PROTECTION RESPONSIBILITY

- Federal Responsibility Area (FRA)
- Local Responsibility Area (LRA) - Unincorporated
- Local Responsibility Area (LRA) - Incorporated

Public Resources Code 4214.205 directs the California Department of Forestry and Fire Protection (CAL FIRE) to map the hazard within State Responsibility Areas (SRAs) based on several factors such as, topography, soil, and weather. These standards were developed by CAL FIRE and approved by the State Board of Forestry and Fire Protection. These standards are intended to provide the basis for development of various mitigation strategies to reduce risks to buildings associated with wildfire fires. The primary goal is to meet the requirements for building codes designed to reduce the ignition potential to buildings in the wildland-urban interface zones.

These maps have been created by CAL FIRE's Fire and Resource Assessment Program (FRAP) using the end model describing development patterns estimated by behavior characteristics based on potential fuels over a 2500 plus year horizon, and updated fire probabilities to quantify the historical and future of vegetation, the response to their combustion. Details of the project and specific modeling methodology can be found at <http://www.cdf.ca.gov/arc/arc/arc.html>.

The content of this map does not represent the design of the Fire Hazard Severity Zones in the State Responsibility Area of California as required by Public Resources Code 4214.205 and articles in the California Code of Regulations, Title 14, Section 15000 Fire Hazard Severity Zones, and as approved by CAL FIRE on November 7, 2007.

An interactive system for viewing map data is hosted by the UC Center for Fire at <http://www.fire.berkeley.edu/ucfrc/>. Questions can be directed to David Beausoleil at dbeausoleil@ucfrc.berkeley.edu.



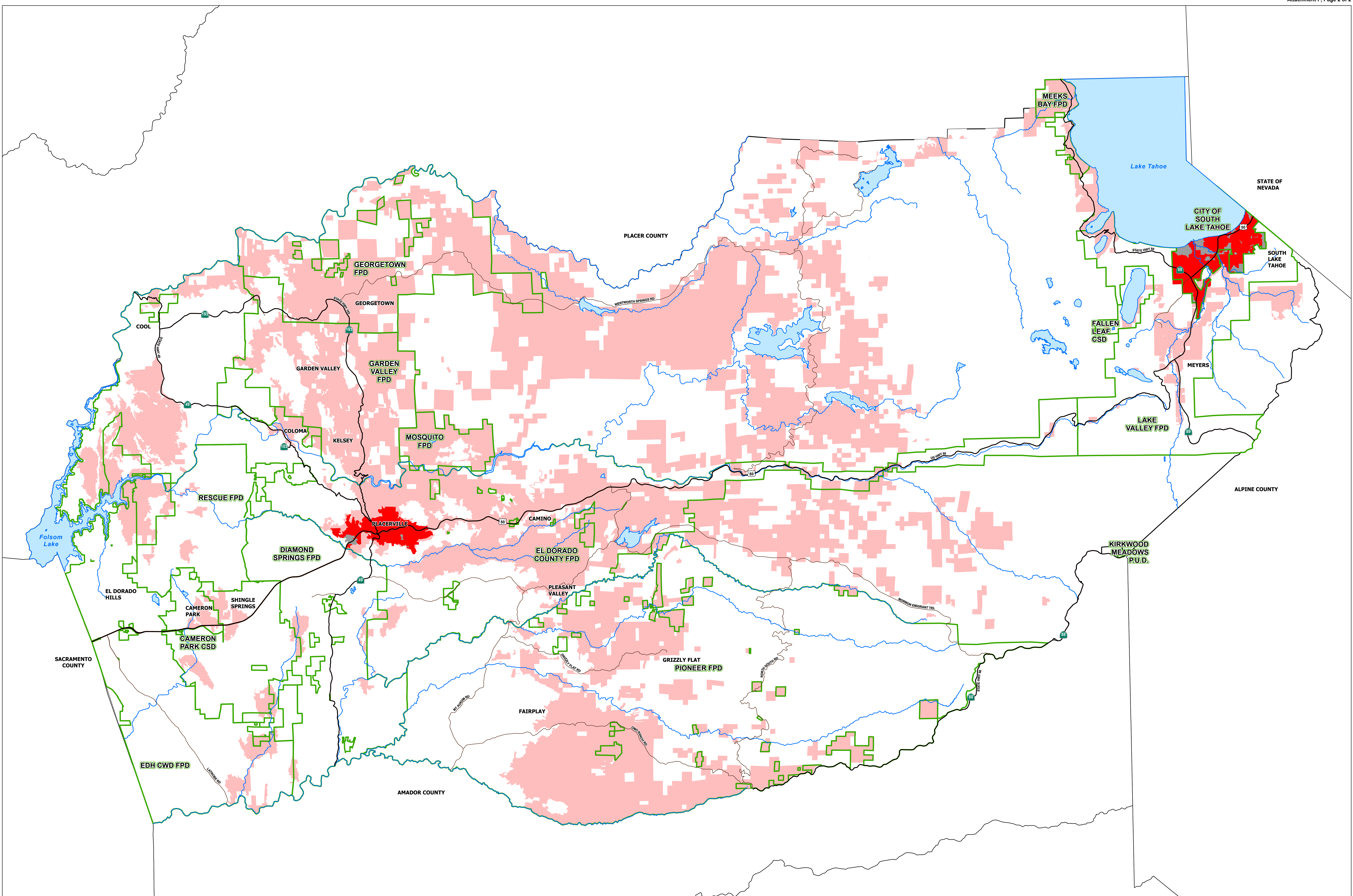
Projection: Albers, NAD 1927
 Scale 1: 100,000
 at 46° x 34.5°
 November 06, 2007

The State of California and the Department of Forestry and Fire Protection make no representations or warranties regarding the accuracy of data or maps. Neither the State nor the Department shall be liable under any circumstances for any direct, special, incidental, or consequential damages with respect to any claim by any user or third party on account of, or arising from, the use of data or maps.

Obtain FRAP maps, data, metadata and publications on the internet at <http://frap.cdf.ca.gov>
 For more information, contact CAL FIRE-FRAP, PO Box 944246, Sacramento, CA 94244-2469, (916) 327-3939.

Arnold Schwarzenegger, Governor,
 State of California
 Mike Chrisman, Secretary for Resources,
 The Resources Agency
 Ruben Grigalva, Director,
 Department of Forestry and Fire Protection

MAP ID: FHSZS06_3
 DATA SOURCES:
 CAL FIRE Fire Hazard Severity Zones (FHSZS06_3)
 CAL FIRE State Responsibility Areas (SRA05_5)
 CAL FIRE Incorporated Cities (Incorp07_3)
 PLS (1:100,000 USGS, Land Grants with CAL FIRE grid)



DISCLAIMER:
THIS DEPICTION WAS COMPILED FROM UNVERIFIED PUBLIC AND PRIVATE SOURCES AND IS ILLUSTRATIVE ONLY. NO REPRESENTATION IS MADE AS TO ACCURACY OF THIS INFORMATION. PARCEL BOUNDARIES ARE PARTICULARLY UNRELIABLE. USERS MAKE USE OF THIS DEPICTION AT THEIR OWN RISK.

NOTES:
LAYER INFORMATION MAY COVER ADDITIONAL AREAS OUTSIDE OF THE DISPLAYED AREA.
PREPARED AT THE REQUEST OF: CAO
DATE: 2019/08/23
MAP PREPARED BY: EMMA KIKUYAMA
DATE: 2019/08/23
G.I.S. PROJECT ID: 8460073855, RELATED REPORT: N/A
EL DORADO COUNTY SURVEYOR/G.I.S. DIVISION
PHONE (530) 621-8511 jose.crummett@edcgov.us

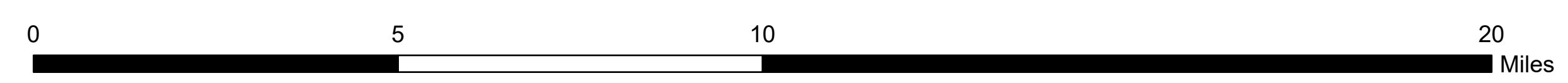


Fire Severity Map

Local Resource Area (LRA)
State Resource Area (SRA)

County of El Dorado
State of California

- Legend**
- Fire Protection Providers
 - Very High Severity - LRA
 - Non Very High Severity - LRA
 - Very High Severity - SRA
 - Non Very High Severity - SRA
 - County Boundary
 - Highway
 - Major Road



MAP DISPLAYED IN STATE PLANE COORDINATE SYSTEM
(NAD 1983 CALIFORNIA ZONE 2, FEET)