

KYBURZ MUTUAL WATER CO.  
 P.O. BOX 33  
 KYBURZ CA 95720

KYBURZ MUTUAL  
 WATER COMPANY  
 OCTOBER 1992



- SOURCE
  - WATER MAIN
  - WATER MAIN DEAD END
  - ⊗ FIRE HYDRANT
  - ⊙ YEAR-AROUND RESIDENCE
  - ⊙ ROUTINE SAMPLE POINT
  - ⊙ FOLLOW-UP SAMPLE POINT
- 1 INCH = APPROX. 100 FEET



CALIFORNIA  
 DEPARTMENT OF  
 TRANSPORTATION

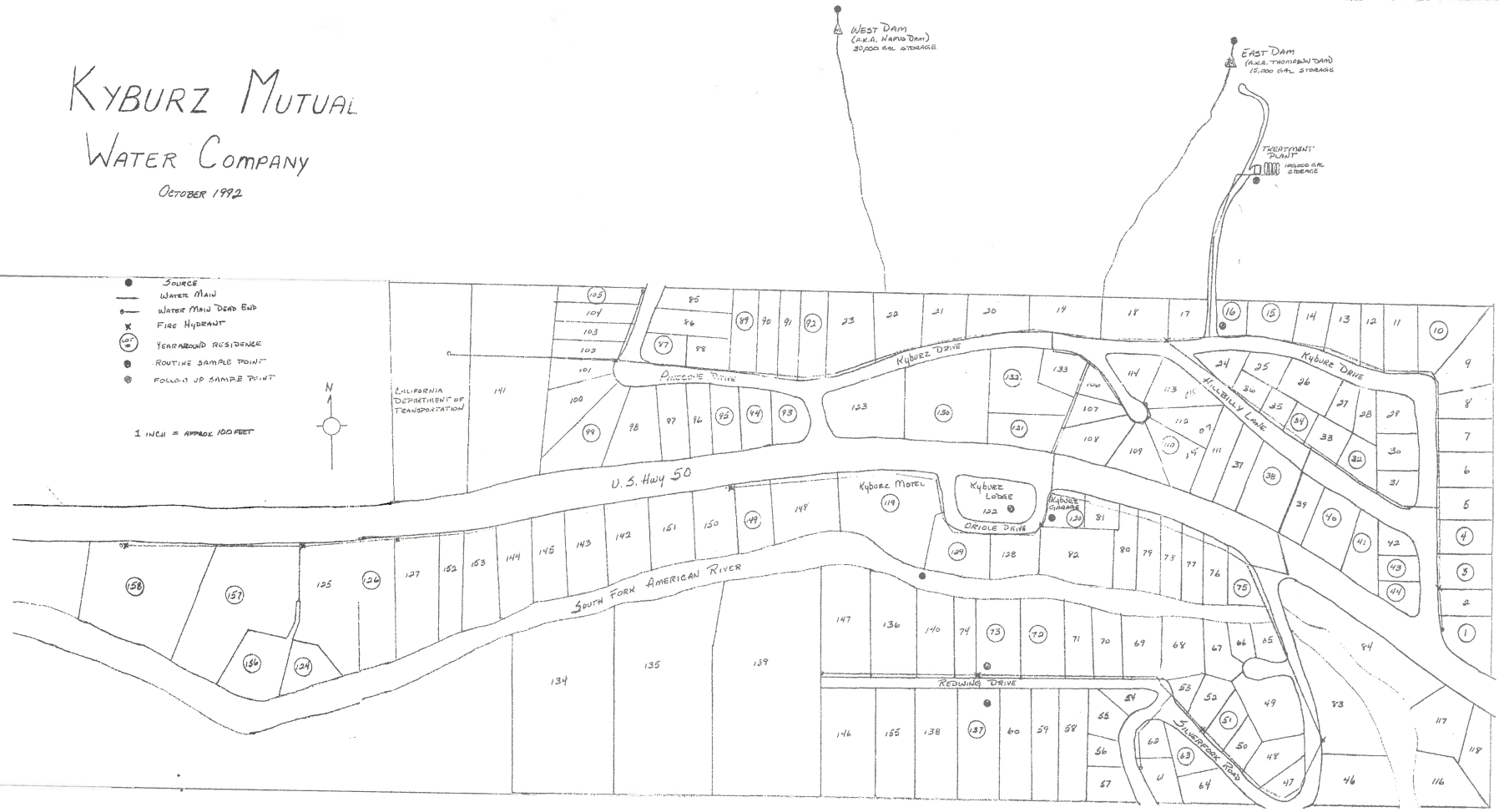


Figure 2. Map of KMWC System

RECEIVED  
 DEC 27 2012  
 EL DORADO LAFCO

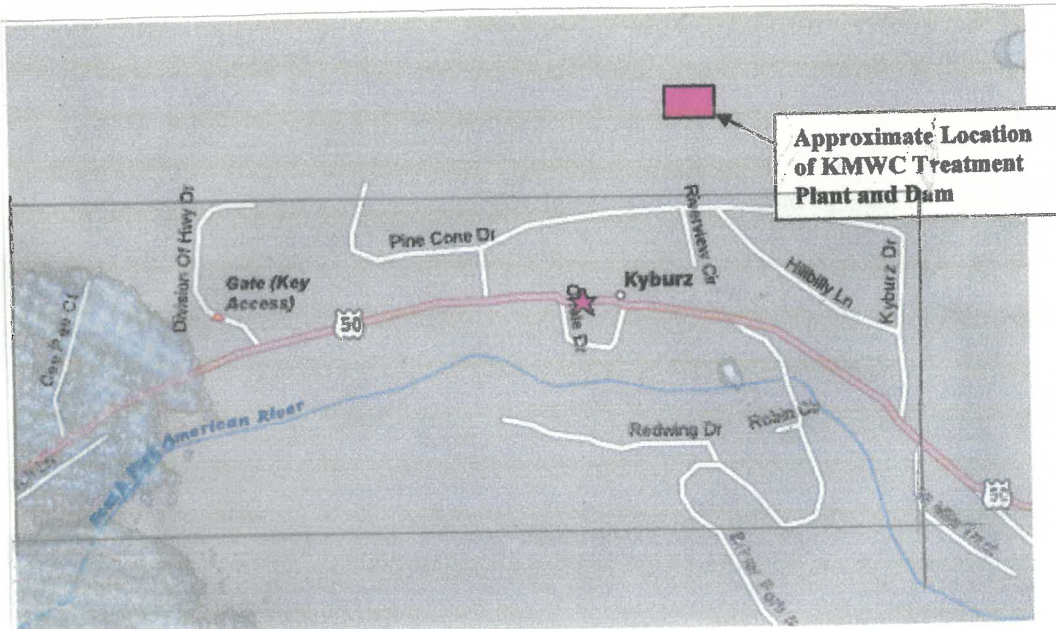
LEGAL DESCRIPTION  
KYBURZ MUTUAL WATER CO.

EXHIBIT "A"

AMENDED JUNE 15, 1985

Situate in the County of El Dorado, State of California, and more particularly described as follows:

The Northwest quarter of the Northwest quarter of Section 27 and North half of Northeast quarter of Section 28, Township 11 North, Range 15 East, M.D.B.&M; together with and including Kyburz Mountain Resort Unit No. 1, according to the map filed in the office of El Dorado County Recorder on October 3, 1957, Map B, page 87; Kyburz Mountain Resort Unit No. 1, according to the map filed in the office of El Dorado County Recorder on August 18, 1957, Map B, page 78; Kyburz Mountain Resort Units 2, 3 and 4, according to the map filed in the office of the El Dorado County Recorder on July 6, 1960, Map C, page 53.



RECEIVED

DEC 27 2012

EL DORADO LAFCO

MAP MANDATED BY ABS4

PREPARED BY  
JIM SLAUGHT (WATERMASTER)  
KYBURZ MUTUAL WATER CO  
P.O. BOX 33, KYBURZ  
(530) 293-3310

---